



MINERT

Angus

SIMONSON

FEBRUARY 15, 2020

1:00 PM / At the Ranch / Dunning, Nebraska

*Selling 110 Yearling Angus Bulls*

*Real - Time Angus*

Bred and Fed in the Sandhills.



# Dear Cattlemen,

Welcome to our annual bull sale on February 15, 2020. We thank you for your continued support in our program and look forward to seeing you on sale day. We are excited about our upcoming progeny of out the new heard bulls TK Steamboat and Kraye Seedstock.

Our program is based on the Sandhills grass with no creep supplement. We run our cows on after growth meadows after weaning with supplement of 25% cake until they calve. Prairie hay and cake are then fed until breeding time. The feed wagon is only used 25 days during the breeding season. The average daily gain test began the day the calves were weaned and weighed (September 1, 2019). The bulls were then weighed the first week in January (January 3, 2020).

Our bull development program and excellent disposition traits continue to be one of the highlights of our program. The bulls are feed on a 25 acre meadow with rations that consist of soy hulls, 12% DDGS, mineral supplements and ground prairie hay.

Our commitment continues to maintain focus on breeding cattle that have the same balance of structure and performance and will perform strong in your breeding program. Buy with confidence from a program that has been a leader within the breed for over fifty years and will continue to be here to serve you in the future. We can always assist those who are unable to attend the sale. Sight, unseen purchases come with a 100% satisfaction guarantee.

We are thankful for our customers, friends, family and neighbors who make sale day happen. Please call or stop by anytime and join us for lunch and pie on sale day!

*Sincerely - JW Simonson*



**Carrol Minert**



**JW, Cindy, Jaylee, and Shaina Simonson**



**Tim, Kim, Alexa, and Alex Minert  
Andrea and Anthony Phillips**



**Wes, Kelly, Hailey, and Landon Minert**

**JW & Cindy Simonson  
Carrol, Tim & Wes Minert  
83450 Hawley Flats Ave  
Dunning, NE 68833**

**Home (308) 538-2548  
JW Cell (308) 880-0079**

SATURDAY - 1:00 PM  
**FEBRUARY 15, 2020**

AT THE RANCH - DUNNING, NE

**SELLING 110 YEARLING ANGUS BULLS  
and 1 WELL BROKE GELDING!**



### SALE LOCATION

**Minert/Simonson Angus Ranch**

**42099 Roseberry Road / Dunning, NE 68833**

Located three miles east of Dunning, NE on Highway 91. Turn at the Minert/Simonson sign and go three miles Southeast.

### AUCTIONEER

Joe Goggins, 406-373-6844

### REPRESENTATIVES

American Angus Association.....Levi Landers, 308-730-1396

Tri-State Livestock News.....Drew Feller, 402-841-4215

Western Livestock Journal.....Jim Gies, 970-454-3836

Western Ag Reporter.....Alan Sears, 970-396-7521

Buyers unable to attend the sale may send bids to any of the above representatives or MINERT/SIMONSON ANGUS.

**Satisfaction is GUARANTEED on all bids.**

**LUNCH** A complimentary lunch will be served on sale day. Join us for pie after the sale as well!

### CATALOG DESIGN

Design Unbridled.....Hannah Shroyer, 402-841-4216

### LODGING

Super 8.....Broken Bow & Ainsworth, 800-800-8000

Rodeway Inn.....Thedford, 308-645-2284

Cobblestone Hotel & Suites.....Broken Bow, 308-767-2060

Halsey Frontier Inn.....308-533-2240

**RETAINED INTEREST** MSAR is retaining 1/3 interest in all bulls sold, unless otherwise stated in catalog or on the block. This does not restrict your use since you have full possession. Very few bulls will actually be collected and when it does occur we will work with the buyer.

**INSURANCE** Mortality insurance (death or injury resulting in death) will be available through American Livestock Insurance.

**NUTRITION** The bulls are not creep fed! They are developed on the ranch on 25 acres with 100 percent of the roughage grass hay. Bulls have not been fed any corn. The complete ration includes soy hulls, 12% DDGS, supplement, molasses and ground hay.

Ed Sabaka.....308-379-7848

**ULTRASOUND** Ultrasound for back fat, marbling, and ribeye will be available sale day.

**FERTILITY** Bulls will be semen tested and scrotal measurements will be available sale day.

**EPDS** EPD's are now being updated weekly. The EPD's printed in this catalog are as of the week of 1/15/20.

**GUARANTEE** All bulls are guaranteed against breeding injury for the first breeding season. Breeding season is defined as the 90 day period following the first turnout of the bulls. Credit for the purchase amount less \$1,500 (buyer keeps salvage value) will be applied toward a replacement of an injured bull. Credit is for a replacement bull or credit in the 2021 sale.

**VOLUME DISCOUNT** A \$100 discount off third bull purchased and \$100 off for each additional bull.

**FREE WINTERING & DELIVERY** Bulls will have excellent care and will be delivered in early April 2020.

**ONLINE BIDDING** Online bidding is available through DVAuction.com. Please register on DV Auction at least 24 hours before the sale. A full time support team can also be reached at 402-474-5557.

**VIDEOS AVAILABLE ON MINERTSIMONSON.COM  
OR DVAUCTION.COM.**

**DVAuction**  
*Broadcasting Real-Time Auctions*

**CALVING EASE STARS**



Bull is recommended **Highly** for use on heifers to sire light birth weight calves.  
Bull is designated to work on heifers that are larger framed with more management.  
Bull is recommended **Highly** for use on cows.

**REFERENCE SIRE**



**RS T K Steamboat D307**  
**BULL REG: 18761484 DOB: 09/04/2016 TAT: D307**

Rito 707 of Ideal 3407 7075  
**S A V Renown 3439**  
 S A V Blackcap May 4136

S A V Net Worth 4200  
**T K Tesa W592**  
 T K Tesa R94

R R Rito 707  
 Ideal 3407 of 1418 076  
 S A V 8180 Traveler 004  
 S A V May 2397  
 S A V 8180 Traveler 004  
 S A V May 2410  
 Bon View New Design 878  
 T K Tesa M508

CED	BW	WW	YW	SC	MILK	MARB	RE	\$W	\$B
-4	4.4	89	153	1.14	25	0.12	0.80	81	136

*We are excited about the Steamboat calves; they are full of muscle with great eye appeal. He definitely stamps them all with a long, stout hip and loads of rib and thickness.*



**1 Simonson Steamboat 4059** ★★  
**BULL REG: 19550261 DOB: 02/12/19 TAT: 4059**

S A V Renown 3439  
**T K Steamboat D307**  
 T K Tesa W592

Rito 707 of Ideal 3407 7075  
 S A V Blackcap May 4136  
 S A V Net Worth 4200  
 T K Tesa R94  
 A A R Image Maker 6538  
 A A R Donna 6514  
 S A V Final Answer 0035  
 MSAR Lady Eston 526

**ANGUS GS**

Act BW	85
Adj WW/WWR	712 / 128
Adj YW	1315

CED	BW	WW	YW	SC	MILK	MARB	RE	\$W	\$B
3	2.6	91	153	2.01	32	0.28	0.61	97	139

CED	BW	WW	YW	DMI	YH	SC	DOC	HP	CEM	MLK	MW	MH	CW	MARB	RE	FAT	TEND
93	92	3	14	43	75	13	93	56	95	11	14	28	4	92	44	64	10

- Dam Record: **BWR 4@100, WWR 4@113**
- **ADG: 3.68**
- Top performing bull at weaning. Mother is a pathfinder cow with four calves at 113 weaning. Long, thick and stout.

**2 Simonson Steamboat 1279** ★  
**BULL REG: 19550726 DOB: 01/30/19 TAT: 1279**

S A V Renown 3439  
**T K Steamboat D307**  
 T K Tesa W592

Rito 707 of Ideal 3407 7075  
 S A V Blackcap May 4136  
 S A V Net Worth 4200  
 T K Tesa R94  
 N Bar Emulation EXT  
 Leachman Erica 0025  
 Minerts Fortune 2000  
 Simonson FOREVER 1371

**ANGUS GS**

Act BW	87
Adj WW/WWR	708 / 127
Adj YW	1286

CED	BW	WW	YW	SC	MILK	MARB	RE	\$W	\$B
-3	3.4	71	120	1.09	21	0.16	0.57	64	96

CED	BW	WW	YW	DMI	YH	SC	DOC	HP	CEM	MLK	MW	MH	CW	MARB	RE	FAT	TEND
94	91	58	63	60	55	19	36	12	44	79	88	71	65	93	42	81	24

- Dam Record: **BWR 10@98, WWR 10@106**
- **ADG: 3.52**
- Jaylee's RightTime cow has produced her best calf at the age of eleven. Lowell actually purchased her from me for Jaylee's show project. It has been fun watching him grow and knowing Lowell's presence is still with us. I finally started flushing her.



LOT 3

**3 Simonson Steamboat 1369** ★  
**BULL REG: 19548975 DOB: 02/01/19 TAT: 1369**

S A V Renown 3439  
**T K Steamboat D307**  
 T K Tesa W592

Msar Final Answer 2019  
**Simonson Lady Eston 2501**  
 Simonson Lady Eston 9211

Rito 707 of Ideal 3407 7075  
 S A V Blackcap May 4136  
 S A V Net Worth 4200  
 T K Tesa R94  
 S A V Final Answer 0035  
 MSAR Lady Eston 526  
 Connealy Industry 5634  
 Simonson Lady Eston 5723

<b>ANGUS</b>	
Act BW	88
Adj WW/WWR	620 / 111
Adj YW	1247

CED	BW	WW	YW	SC	MILK	MARB	RE	\$W	\$B								
-2	4.1	68	104	0.4	29	0.49	0.22	74	89								
CED	BW	WW	YW	DMI	YH	SC	DOC	HP	CEM	MLK	MW	MH	CW	MARB	RE	FAT	TEND
80	95	16	66	28	77	65	29	97	71	23	78	81	42	65	79	88	57

- Dam Record: **BWR 6@88, WWR 6@102**
- **ADG: 3.82**
- This bull has a lot of rib that carries into his flank.

**4 Simonson Steamboat 2379** ★  
**BULL REG: 19548944 DOB: 02/22/19 TAT: 2379**

S A V Renown 3439  
**T K Steamboat D307**  
 T K Tesa W592

HF Who's That 7A  
**MSAR Forever Lady 668**  
 Msar Forever Lady 276

Rito 707 of Ideal 3407 7075  
 S A V Blackcap May 4136  
 S A V Net Worth 4200  
 T K Tesa R94  
 HF Tiger 5T  
 HF Lucy 317Y  
 Connealy Industry 5634  
 Msar Forever Lady 3252

<b>ANGUS</b>	
Act BW	97
Adj WW/WWR	605 / 109
Adj YW	

CED	BW	WW	YW	SC	MILK	MARB	RE	\$W	\$B								
-3	5.4	82	146	1.47	26	-0.03	0.81	71	139								
CED	BW	WW	YW	DMI	YH	SC	DOC	HP	CEM	MLK	MW	MH	CW	MARB	RE	FAT	TEND
94	99	19	12	35	39	22	99	37	54	79	52	44	18	98	29	58	27

- Dam Record: **BWR 2@106, WWR 2@112**
- **ADG: 3.03**
- Nice performing bull out of a deep ribbed Who's That Daughter.

**5 Simonson Steamboat 2039** ★  
**BULL REG: 19549075 DOB: 02/14/19 TAT: 2039**

S A V Renown 3439  
**T K Steamboat D307**  
 T K Tesa W592

A A R High Five 8563  
**Msar Ladst Eston 1062**  
 Msar Lady Eston 9855

Rito 707 of Ideal 3407 7075  
 S A V Blackcap May 4136  
 S A V Net Worth 4200  
 T K Tesa R94  
 A A R Image Maker 6538  
 A A R Donna 6514  
 Brooks Rito 6577  
 MSAR Lady Eston 7632

<b>ANGUS</b>	
Act BW	90
Adj WW/WWR	591 / 106
Adj YW	1244

CED	BW	WW	YW	SC	MILK	MARB	RE	\$W	\$B
1	2.8	78	134	1.09	28	0.23	0.48	76	119

- Dam Record: **BWR 6@103, WWR 6@107**
- **ADG: 3.98**
- Larger frame smooth bull.



LOT 6

**6 Simonson Steamboat 1759** ★  
**BULL REG: 19605957 DOB: 02/07/19 TAT: 1759**

S A V Renown 3439  
**T K Steamboat D307**  
 T K Tesa W592

Connealy Industry 5634  
**Simonson GD Blackcap 9223**  
 Simonson GD Blackcap 7914

Rito 707 of Ideal 3407 7075  
 S A V Blackcap May 4136  
 S A V Net Worth 4200  
 T K Tesa R94  
 Connealy Freightliner  
 Eilera of Conanga 2583  
 Sitz Alliance 476P  
 Simonson G D Blackcap 4623

<b>ANGUS</b>	
Act BW	91
Adj WW/WWR	555 / 96
Adj YW	1190

CED	BW	WW	YW	SC	MILK	MARB	RE	\$W	\$B
0	2.7	65	108	1.23	24	0.16	0.61	60	102

- Dam Record: **BWR 8@102, WWR 8@99**
- **ADG: 3.87**
- Smooth made calf.

**7 Simonson Steamboat 1349** ★★  
**BULL REG: 19548991 DOB: 02/01/19 TAT: 1349**

S A V Renown 3439  
**T K Steamboat D307**  
 T K Tesa W592

Msar Shaker 2307  
**Simonson Pride 1429**  
 Simonson Pride 6818

Rito 707 of Ideal 3407 7075  
 S A V Blackcap May 4136  
 S A V Net Worth 4200  
 T K Tesa R94  
 Connealy Freightliner  
 Msar Pride 538  
 Sitz Alliance 476P  
 SIMONSON Pride 3504

<b>ANGUS</b>	
Act BW	88
Adj WW/WWR	529 / 95
Adj YW	1070

CED	BW	WW	YW	SC	MILK	MARB	RE	\$W	\$B								
9	0.8	60	106	1.13	28	0.28	0.48	69	107								
CED	BW	WW	YW	DMI	YH	SC	DOC	HP	CEM	MLK	MW	MH	CW	MARB	RE	FAT	TEND
18	17	63	65	68	61	31	98	96	57	18	85	93	62	71	79	86	95

- Dam Record: **BWR 6@101, WWR 7@103**
- **ADG: 3.30**
- Bull and mother were separated going to grass.



LOT 5



LOT 8

**8 Simonson Steamboat 4019** ★★  
**BULL REG: 19548937 DOB: 01/30/19 TAT: 4019**

S A V Renown 3439  
**T K Steamboat D307**  
 T K Tesa W592

Msar Shaker 2307  
**Simonson Blackcap 2529**  
 Simonson Blackcap 0307

Rito 707 of Ideal 3407 7075  
 S A V Blackcap May 4136  
 S A V Net Worth 4200  
 T K Tesa R94  
 Connealy Freightliner  
 Msar Pride 538  
 S A V Final Answer 0035  
 Simonson Blackcap 5720

<b>ANGUS</b>	
Act BW	80
Adj WW/WWR	641 / 115
Adj YW	1270

CED	BW	WW	YW	SC	MILK	MARB	RE	\$W	\$B								
5	1	71	120	1.27	29	0.23	0.39	82	116								
CED	BW	WW	YW	DMI	YH	SC	DOC	HP	CEM	MLK	MW	MH	CW	MARB	RE	FAT	TEND
70	74	39	77	65	79	3	33	25	89	17	86	96	51	90	70	91	73

- Dam Record: BWR 5@91, WWR 5@103
- ADG: 3.84
- Great bull calf with good spread on his numbers.

**9 Simonson Steamboat 2059** ★  
**BULL REG: 19548973 DOB: 02/16/19 TAT: 2059**

S A V Renown 3439  
**T K Steamboat D307**  
 T K Tesa W592

HF Who's That 7A  
**MSAR Bluebird 608**  
 Msar Bluebird 808

Rito 707 of Ideal 3407 7075  
 S A V Blackcap May 4136  
 S A V Net Worth 4200  
 T K Tesa R94  
 HF Tiger 5T  
 HF Lucy 317Y  
 Connealy Industry 5634  
 M S A R Bluebird 1212

<b>ANGUS</b>	
Act BW	94
Adj WW/WWR	632 / 113
Adj YW	1088

CED	BW	WW	YW	SC	MILK	MARB	RE	\$W	\$B								
-2	4.3	65	113	0.83	26	0.49	0.45	56	126								
CED	BW	WW	YW	DMI	YH	SC	DOC	HP	CEM	MLK	MW	MH	CW	MARB	RE	FAT	TEND
93	97	42	53	73	47	72	87	97	88	86	23	34	37	80	70	88	75

- Dam Record: BWR 2@108, WWR 2@105
- ADG: 2.78
- Nice performing cow bull out of a solid Who's That daughter.

**10 TMinert Steamboat 1949** ★  
**BULL REG: 19550271 DOB: 02/10/19 TAT: 1949**

S A V Renown 3439  
**T K Steamboat D307**  
 T K Tesa W592

A A R High Five 8563  
**Msar Queen Eva 426**  
 Msar Queen Eva 6557

Rito 707 of Ideal 3407 7075  
 S A V Blackcap May 4136  
 S A V Net Worth 4200  
 T K Tesa R94  
 A A R Image Maker 6538  
 A A R Donna 6514  
 Sitz Alliance 476P  
 Msar Queen Eva 498

<b>ANGUS</b>	
Act BW	95
Adj WW/WWR	623 / 112
Adj YW	1172

CED	BW	WW	YW	SC	MILK	MARB	RE	\$W	\$B								
0	2.8	78	127	0.54	28	0.44	0.32	83	112								
CED	BW	WW	YW	DMI	YH	SC	DOC	HP	CEM	MLK	MW	MH	CW	MARB	RE	FAT	TEND
95	93	16	19	74	43	41	66	72	90	34	29	24	30	72	85	87	22

- Dam Record: BWR 3@108, WWR 3@115
- ADG: 3.34
- Bigger framed Steamboat with lots of performance.

**11 Simonson Steamboat 5589** ★  
**BULL REG: 19550794 DOB: 03/18/19 TAT: 5589**

S A V Renown 3439  
**T K Steamboat D307**  
 T K Tesa W592

HF Who's That 7A  
**Shaina Lady Eston 6903**  
 Simonson Lady Eston 349

Rito 707 of Ideal 3407 7075  
 S A V Blackcap May 4136  
 S A V Net Worth 4200  
 T K Tesa R94  
 HF Tiger 5T  
 HF Lucy 317Y  
 S A V Pioneer 7301  
 Msar Lady Eston 949

<b>ANGUS</b>	
Act BW	80
Adj WW/WWR	578 / 104
Adj YW	

CED	BW	WW	YW	SC	MILK	MARB	RE	\$W	\$B								
-2	3.3	73	126	1.15	19	0.1	0.77	61	123								
CED	BW	WW	YW	DMI	YH	SC	DOC	HP	CEM	MLK	MW	MH	CW	MARB	RE	FAT	TEND
93	82	45	54	25	89	39	42	79	67	68	25	40	36	98	37	8	26

- Dam Record: BWR 2@97, WWR 2@108
- ADG: 4.08
- Younger Steamboat with good performance. Give him time.

**12 Simonson Steamboat 5129** ★  
**BULL REG: 19550277 DOB: 03/01/19 TAT: 5129**

S A V Renown 3439  
**T K Steamboat D307**  
 T K Tesa W592

HF Who's That 7A  
**MSAR Pride 6545**  
 Msar Pride 432

Rito 707 of Ideal 3407 7075  
 S A V Blackcap May 4136  
 S A V Net Worth 4200  
 T K Tesa R94  
 HF Tiger 5T  
 HF Lucy 317Y  
 A A R High Five 8563  
 Msar Pride 932

<b>ANGUS</b>	
Act BW	92
Adj WW/WWR	616 / 111
Adj YW	

CED	BW	WW	YW	SC	MILK	MARB	RE	\$W	\$B								
3	1.7	63	101	0.79	31	0.32	0.44	75	95								
CED	BW	WW	YW	DMI	YH	SC	DOC	HP	CEM	MLK	MW	MH	CW	MARB	RE	FAT	TEND
77	66	25	37	67	62	37	8	72	91	10	45	35	39	92	56	74	30

- Dam Record: BWR 2@108, WWR 2@116
- ADG: 2.96
- Younger bull.

**13 TM Minert Steamboat 2589** ★★  
**BULL REG: 19550898 DOB: 02/26/19 TAT: 2589**

S A V Renown 3439  
**T K Steamboat D307**  
 T K Tesa W592

Sitz Top Seed 539X  
**TM Queen 677**  
 Msar Queen 877

Rito 707 of Ideal 3407 7075  
 S A V Blackcap May 4136  
 S A V Net Worth 4200  
 T K Tesa R94  
 Sitz Upward 307R  
 Sitz Eisa Evergreen 12S  
 Leachman Right Time  
 Minerts Queen 777

<b>ANGUS</b>	
Act BW	81
Adj WW/WWR	544 / 98
Adj YW	

CED	BW	WW	YW	SC	MILK	MARB	RE	\$W	\$B
3	1.7	64	114	0.85	27	0.21	0.6	63	116

- Dam Record: BWR 2@98, WWR 2@105
- ADG: 4.08
- Lighter birth weight Steamboat.

**14 TMinert Steamboat 2509** ★  
**BULL REG: 19550272 DOB: 02/24/19 TAT: 2509**

S A V Renown 3439  
**T K Steamboat D307**  
 T K Tesa W592

Mohnen South Dakota 402  
**MSAR Lucy 628**  
 Msar Lucy 0916

Rito 707 of Ideal 3407 7075  
 S A V Blackcap May 4136  
 S A V Net Worth 4200  
 T K Tesa R94  
 Mohnen Density 730  
 Mohnen Jilt 539  
 Connealy Onstar 3213  
 LC Lucy 4218

<b>ANGUS</b>	
Act BW	94
Adj WW/WWR	675 / 121
Adj YW	

CED	BW	WW	YW	SC	MILK	MARB	RE	\$W	\$B								
2	1.8	79	134	0.95	29	0.57	0.33	87	125								
CED	BW	WW	YW	DMI	YH	SC	DOC	HP	CEM	MLK	MW	MH	CW	MARB	RE	FAT	TEND
66	53	22	30	19	48	30	77	64	39	74	45	23	12	70	75	68	47

- Dam Record: BWR 2@105, WWR 2@117
- ADG: 3.75
- Good bull that weaned at 121. Makes cow with 2@ 117.
- Larger frame bull.

**15 Simonson Steamboat 2079** ★  
**BULL REG: 19548985 DOB: 02/16/19 TAT: 2079**

S A V Renown 3439  
**T K Steamboat D307**  
 T K Tesa W592  
 HF Who's That 7A  
**MSAR Pride 617**  
 Msar Pride 8707

Rito 707 of Ideal 3407 7075  
 S A V Blackcap May 4136  
 S A V Net Worth 4200  
 T K Tesa R94  
 HF Tiger 5T  
 HF Lucy 317Y  
 Sitz Alliance 476P  
 Msar Pride 6515

**ANGUS GS**

Act BW
90
Adj WW/WWR
578 / 104
Adj YW
1164

CED	BW	WW	YW	SC	MILK	MARB	RE	\$W	\$B								
3	2.4	67	125	1.02	35	0.17	0.76	72	134								
CED	BW	WW	YW	DMI	YH	SC	DOC	HP	CEM	MLK	MW	MH	CW	MARB	RE	FAT	TEND
90	87	42	44	73	74	47	93	80	60	6	43	10	11	89	16	22	52

- Dam Record: **BWR 2@105, WWR 2@105**
- **ADG: 3.57**
- Solid bull.

**16 Simonson Outside 1309** ★★  
**BULL REG: 19562479 DOB: 01/31/19 TAT: 1309**

HA Outside 3008  
**TEF Outside 514**  
 T E F Jet Princess 714  
 A A R High Five 8563  
**Msar Queen 4317**  
 Msar Queen 056

KG Solution 0018  
 HA Ever Lady 1575  
 Hilltop Alliance T246  
 T E F Jet Princess 405  
 A A R Image Maker 6538  
 A A R Donna 6514  
 Connealy Freightliner  
 Msar Queen 726

**ANGUS GS**

Act BW
93
Adj WW/WWR
538 / 97
Adj YW

CED	BW	WW	YW	SC	MILK	MARB	RE	\$W	\$B
3	2.3	62	109		23	0.18	0.43	55	112

- Dam Record: **BWR 3@102, WWR 3@101**
- **ADG: 3.55**

**17 Simonson Steamboat 2729** ★★  
**BULL REG: 19548986 DOB: 03/08/19 TAT: 2729**

S A V Renown 3439  
**T K Steamboat D307**  
 T K Tesa W592  
 HF Who's That 7A  
**MSAR Pride 655**  
 Msar Pride 1030

Rito 707 of Ideal 3407 7075  
 S A V Blackcap May 4136  
 S A V Net Worth 4200  
 T K Tesa R94  
 HF Tiger 5T  
 HF Lucy 317Y  
 A A R High Five 8563  
 Msar Pride 839

**ANGUS GS**

Act BW
86
Adj WW/WWR
589 / 106
Adj YW

CED	BW	WW	YW	SC	MILK	MARB	RE	\$W	\$B								
6	1.7	72	119	0.91	24	0.15	0.29	75	116								
CED	BW	WW	YW	DMI	YH	SC	DOC	HP	CEM	MLK	MW	MH	CW	MARB	RE	FAT	TEND
66	63	24	33	61	13	44	77	61	65	54	21	12	16	85	85	83	16

- Dam Record: **BWR 2@100, WWR 2@106**
- **ADG: 3.33**
- Younger bull that weaned at 106 with balanced numbers.



Jaylee, JW, and Shaina



**18 Simonson Steamboat 2549** ★  
**BULL REG: 19550273 DOB: 02/25/19 TAT: 2549**

S A V Renown 3439  
**T K Steamboat D307**  
 T K Tesa W592  
 S A V Pioneer 7301  
**MSAR Pride 638**  
 Msar Pride 538

Rito 707 of Ideal 3407 7075  
 S A V Blackcap May 4136  
 S A V Net Worth 4200  
 T K Tesa R94  
 S A V Final Answer 0035  
 S A V Blackbird 5297  
 Connealy Onstar 3213  
 Msar Pride 338

**ANGUS GS**

Act BW
89
Adj WW/WWR
666 / 120
Adj YW

CED	BW	WW	YW	SC	MILK	MARB	RE	\$W	\$B								
0	3.5	96	168	1.78	23	0.08	0.91	85	138								
CED	BW	WW	YW	DMI	YH	SC	DOC	HP	CEM	MLK	MW	MH	CW	MARB	RE	FAT	TEND
92	79	15	12	73	79	2	57	55	95	81	42	70	8	98	14	12	20

- Dam Record: **BWR 2@106, WWR 2@114**
- **ADG: 3.93**
- Deep and thick bull out of a Pioneer daughter that has 2@114.

**19 Simonson Steamboat 2619** ★★  
**BULL REG: 19548996 DOB: 02/28/19 TAT: 2619**

S A V Renown 3439  
**T K Steamboat D307**  
 T K Tesa W592  
 HF Rising Son 13B  
**Simonson Pride 6923**  
 Simonson Pride 3608

Rito 707 of Ideal 3407 7075  
 S A V Blackcap May 4136  
 S A V Net Worth 4200  
 T K Tesa R94  
 HF Simulator 62Z  
 HF Evening Tinge 9L  
 S A V Pioneer 7301  
 Simonson Pride 7925

**ANGUS GS**

Act BW
81
Adj WW/WWR
511 / 92
Adj YW

CED	BW	WW	YW	SC	MILK	MARB	RE	\$W	\$B								
1	1.4	64	118	1.2	24	0.51	0.57	65	119								
CED	BW	WW	YW	DMI	YH	SC	DOC	HP	CEM	MLK	MW	MH	CW	MARB	RE	FAT	TEND
81	64	56	24	62	87	34	49	67	40	50	67	76	38	71	35	54	84

- Dam Record: **BWR 2@97, WWR 2@95**
- **ADG: 3.87**
- Lighter birth weight Steamboat.

**20 Simonson Steamboat 2369** ★★  
**BULL REG: 19550276 DOB: 02/22/19 TAT: 2369**

S A V Renown 3439  
**T K Steamboat D307**  
 T K Tesa W592  
 Msar High Five 8452  
**MSAR Pride 6504**  
 Msar Pride 932

Rito 707 of Ideal 3407 7075  
 S A V Blackcap May 4136  
 S A V Net Worth 4200  
 T K Tesa R94  
 A A R High Five 8563  
 Msar GD Blackcap 095  
 Msar Sheriff  
 Msar Pride 432

**ANGUS GS**

Act BW
83
Adj WW/WWR
576 / 103
Adj YW

CED	BW	WW	YW	SC	MILK	MARB	RE	\$W	\$B								
1	2.2	64	105	0.95	22	0.03	0.61	65	95								
CED	BW	WW	YW	DMI	YH	SC	DOC	HP	CEM	MLK	MW	MH	CW	MARB	RE	FAT	TEND
86	88	59	62	51	63	66	89	74	83	46	44	36	61	100	43	31	30

- Dam Record: **BWR 2@102, WWR 2@100**
- **ADG: 3.83**

**21** **Simonson Steamboat 2149** ★★  
**BULL** REG: 19548971 DOB: 02/19/19 TAT: 2149

S A V Renown 3439  
**T K Steamboat D307**  
 T K Tesa W592

Rito 707 of Ideal 3407 7075  
 S A V Blackcap May 4136  
 S A V Net Worth 4200  
 T K Tesa R94  
 Connealy Freightliner  
 Eiler of Conanga 2583  
 Connealy Front Page 0228  
 Msar Pride 421

Act BW	81
Adj WW/WWR	616 / 111
Adj YW	1261

CED	BW	WW	YW	SC	MILK	MARB	RE	\$W	\$B
4	1.6	72	119	1.34	22	0.25	0.57	68	106

- Dam Record: BWR 6@92, WWR 6@99
- ADG: 4.03
- Good weaning and yearling. Lighter birthweight Steamboat.

**22** **Simonson Steamboat 2049** ★★  
**BULL** REG: 19549073 DOB: 02/16/19 TAT: 2049

S A V Renown 3439  
**T K Steamboat D307**  
 T K Tesa W592

Rito 707 of Ideal 3407 7075  
 S A V Blackcap May 4136  
 S A V Net Worth 4200  
 T K Tesa R94  
 Sitz Upward 307R  
 Sitz Eisa Evergreen 12S  
 Mohnen South Dakota 402  
 Bar S PRIDE 4246

Act BW	79
Adj WW/WWR	571 / 103
Adj YW	1177

CED	BW	WW	YW	SC	MILK	MARB	RE	\$W	\$B
4	1.4	76	130		28	0.3	0.61	77	123

- Dam Record: BWR 2@99, WWR 2@111
- ADG: 3.70
- Lighter birth weight bull.

**24** **Simonson Steamboat 1879** ★  
**BULL** REG: 19550753 DOB: 02/09/19 TAT: 1879

S A V Renown 3439  
**T K Steamboat D307**  
 T K Tesa W592

Rito 707 of Ideal 3407 7075  
 S A V Blackcap May 4136  
 S A V Net Worth 4200  
 T K Tesa R94  
 A A R Image Maker 6538  
 A A R Donna 6514  
 Leachman Right Time  
 Msar Edella 906

Act BW	93
Adj WW/WWR	587 / 105
Adj YW	1157

CED	BW	WW	YW	SC	MILK	MARB	RE	\$W	\$B
2	2.1	80	144	1.17	30	0.04	0.69	83	121

CED	BW	WW	YW	DMI	YH	SC	DOC	HP	CEM	MLK	MW	MH	CW	MARB	RE	FAT	TEND
81	85	12	13	42	10	41	66	64	59	55	19	25	15	99	16	11	14

- Dam Record: BWR 5@107, WWR 5@106
- ADG: 3.47

**25** **Simonson Steamboat 1549** ★  
**BULL** REG: 19548972 DOB: 02/02/19 TAT: 1549

S A V Renown 3439  
**T K Steamboat D307**  
 T K Tesa W592

Rito 707 of Ideal 3407 7075  
 S A V Blackcap May 4136  
 S A V Net Worth 4200  
 T K Tesa R94  
 O C C Legend 616L  
 Gibbet Hill Mignonne E37  
 S A V 8180 Traveler 004  
 MSAR Van Pride 442

Act BW	98
Adj WW/WWR	632 / 113
Adj YW	1267

CED	BW	WW	YW	SC	MILK	MARB	RE	\$W	\$B
-7	4.7	70	110	2.03	26	-0.02	0.49	68	83

CED	BW	WW	YW	DMI	YH	SC	DOC	HP	CEM	MLK	MW	MH	CW	MARB	RE	FAT	TEND
100	99	53	91	53	85	36	91	90	81	42	92	95	68	95	56	65	70

- Dam Record: BWR 6@105, WWR 6@113
- ADG: 3.87
- Stout cow bull.



**23** **Simonson Steamboat 1959** ★  
**BULL** REG: 19550258 DOB: 02/10/19 TAT: 1959

S A V Renown 3439  
**T K Steamboat D307**  
 T K Tesa W592

Rito 707 of Ideal 3407 7075  
 S A V Blackcap May 4136  
 S A V Net Worth 4200  
 T K Tesa R94  
 Sitz Upward 307R  
 Sitz Eisa Evergreen 12S  
 A A R High Five 8563  
 Msar Lady Eston 046

Act BW	87
Adj WW/WWR	619 / 111
Adj YW	1264

CED	BW	WW	YW	SC	MILK	MARB	RE	\$W	\$B
3	2.3	75	124	1.46	26	0.18	0.55	81	105

CED	BW	WW	YW	DMI	YH	SC	DOC	HP	CEM	MLK	MW	MH	CW	MARB	RE	FAT	TEND
56	54	25	53	68	85	1	44	14	55	39	44	64	40	93	58	75	81

- Dam Record: BWR 4@89, WWR 4@98
- ADG: 3.94
- Moderate, thick, well-performing Steamboat.

**26** **Simonson Steamboat 1399** ★  
**BULL** REG: 19548974 DOB: 02/02/19 TAT: 1399

S A V Renown 3439  
**T K Steamboat D307**  
 T K Tesa W592

Rito 707 of Ideal 3407 7075  
 S A V Blackcap May 4136  
 S A V Net Worth 4200  
 T K Tesa R94  
 Connealy Freightliner  
 Msar Pride 538  
 Msar Sheriff  
 Msar G D Blackcap 382

Act BW	90
Adj WW/WWR	597 / 107
Adj YW	1232

CED	BW	WW	YW	SC	MILK	MARB	RE	\$W	\$B
5	2.3	72	121	1.91	25	0.02	0.74	74	115

CED	BW	WW	YW	DMI	YH	SC	DOC	HP	CEM	MLK	MW	MH	CW	MARB	RE	FAT	TEND
76	71	62	68	66	89	18	91	89	61	25	59	71	8	100	21	63	38

- Dam Record: BWR 4@108, WWR 4@100
- ADG: 3.87
- Stout cow bull. Deep and thick.



**27 Simonson Steamboat 1459** ★★  
**BULL REG: 19550255 DOB: 02/03/19 TAT: 1459**

S A V Renown 3439  
**T K Steamboat D307**  
 T K Tesa W592

Msar Shaker 2307  
**Shaina Edella 2546**  
 SHAINA Edella 706

Rito 707 of Ideal 3407 7075  
 S A V Blackcap May 4136  
 S A V Net Worth 4200  
 T K Tesa R94  
 Connealy Freightliner  
 Msar Pride 538  
 Leachman Right Time  
 MSAR Edella 506

<b>ANGUS</b>	
Act BW	85
Adj WW/WWR	577 / 104
Adj YW	1164

CED	BW	WW	YW	SC	MILK	MARB	RE	\$W	\$B								
5	1.2	55	82	0.31	24	0.42	0.16	64	74								
CED	BW	WW	YW	DMI	YH	SC	DOC	HP	CEM	MLK	MW	MH	CW	MARB	RE	FAT	TEND
54	28	65	96	64	94	84	88	76	45	41	79	88	72	78	96	85	38

- Dam Record: **BWR 6@96, WWR 6@103**
- **ADG: 3.58**
- Good bull with lighter birth.



**LOT 28**

**28 TMinert Steamboat 2009** ★  
**BULL REG: 19550274 DOB: 02/12/19 TAT: 2009**

S A V Renown 3439  
**T K Steamboat D307**  
 T K Tesa W592

S A V Pioneer 7301  
**MSAR Forever Lady 665**  
 Msar Forever Lady 225

Rito 707 of Ideal 3407 7075  
 S A V Blackcap May 4136  
 S A V Net Worth 4200  
 T K Tesa R94  
 S A V Final Answer 0035  
 S A V Blackbird 5297  
 A A R High Five 8563  
 Msar Forever Lady 925

<b>ANGUS</b>	
Act BW	83
Adj WW/WWR	575 / 103
Adj YW	1145

CED	BW	WW	YW	SC	MILK	MARB	RE	\$W	\$B								
3	3.1	65	114	1.56	22	0.51	0.67	58	115								
CED	BW	WW	YW	DMI	YH	SC	DOC	HP	CEM	MLK	MW	MH	CW	MARB	RE	FAT	TEND
64	66	36	45	65	83	11	63	35	95	52	20	29	55	79	33	37	88

- Dam Record: **BWR 1@98, WWR 1@103**
- **ADG: 3.47**
- Deep and thick. Heifer bull.



**LOT 29**

**29 Simonson Steamboat 1199** ★★  
**BULL REG: 19548976 DOB: 01/29/19 TAT: 1199**

S A V Renown 3439  
**T K Steamboat D307**  
 T K Tesa W592

Barstow Dash Y8  
**Simonson Pride 4706**  
 Simonson Pride 1438

Rito 707 of Ideal 3407 7075  
 S A V Blackcap May 4136  
 S A V Net Worth 4200  
 T K Tesa R94  
 Sitz Dash 10277  
 Barstow Queen W14  
 Connealy Industry 5634  
 Simonson Pride 6815

<b>ANGUS</b>	
Act BW	74
Adj WW/WWR	503 / 90
Adj YW	1130

CED	BW	WW	YW	SC	MILK	MARB	RE	\$W	\$B
9	-0.7	55	97	1.11	23	0.29	0.59	57	110

- Dam Record: **BWR 4@91, WWR 4@93**
- **ADG: 3.82**
- Light birthweight Steamboat. Smooth shoulder.

**30 Simonson Steamboat 4049** ★  
**BULL REG: 19548992 DOB: 02/01/19 TAT: 4049**

S A V Renown 3439  
**T K Steamboat D307**  
 T K Tesa W592

SIMONSON Right Time 6135  
**Simonson Edella 1434**  
 Simonson Edella 4620

Rito 707 of Ideal 3407 7075  
 S A V Blackcap May 4136  
 S A V Net Worth 4200  
 T K Tesa R94  
 MSAR Right Time 2511  
 Simonson Pride 1355  
 G D A R Traveler 044  
 Simonson Edella 598

<b>ANGUS</b>	
Act BW	94
Adj WW/WWR	591 / 106
Adj YW	1178

CED	BW	WW	YW	SC	MILK	MARB	RE	\$W	\$B								
-4	4.4	71	113	0.95	19	0.11	0.85	63	98								
CED	BW	WW	YW	DMI	YH	SC	DOC	HP	CEM	MLK	MW	MH	CW	MARB	RE	FAT	TEND
91	84	36	54	17	76	87	77	48	84	75	23	19	63	95	27	47	53

- Dam Record: **BWR 5@104, WWR 5@104**
- **ADG: 3.58**
- Thick and smaller framed.

**REFERENCE SIRE**



**RS S A V Renown 3439**  
**BULL REG: 17633839 DOB: 01/07/2013 TAT: 3439**

| R R Rito 707  
**Rito 707 of Ideal 3407 7075**  
 | Ideal 3407 of 1418 076

| S A V 8180 Traveler 004  
**S A V Blackcap May 4136**  
 | S A V May 2397

Rito N Bar  
 Eriskay of Rollin Rock 3  
 Ideal 1418 of 8103 4286  
 Ideal 076 of 692 8375  
 Sitz Traveler 8180  
 Boyd Forever Lady 8003  
 S A F 598 Bando 5175  
 S A V May 7238

CED	BW	WW	YW	SC	MILK	MARB	RE	\$W	\$B
0	2.9	72	128	0.50	20	-0.09	0.94	63	94

**31** **Simonson Renown 1769** ★  
**BULL** REG: 19548964 DOB: 02/07/19 TAT: 1769

Rito 707 of Ideal 3407 7075  
**S A V Renown 3439**  
 S A V Blackcap May 4136  
 A A R High Five 8563  
**Msar GD Blackcap 086**  
 Msar GD Blackcap 8745

R R Rito 707  
 Ideal 3407 of 1418 076  
 S A V 8180 Traveler 004  
 S A V May 2397  
 A A R Image Maker 6538  
 A A R Donna 6514  
 Connealy Industry 5634  
 Msar GD Blackcap 196

<b>ANGUS</b>	
Act BW	103
Adj WW/WWR	607 / 109
Adj YW	1045

CED	BW	WW	YW	SC	MILK	MARB	RE	\$W	\$B								
-4	3.1	63	100	0.49	14	-0.15	0.93	50	71								
CED	BW	WW	YW	DMI	YH	SC	DOC	HP	CEM	MLK	MW	MH	CW	MARB	RE	FAT	TEND
88	53	28	86	66	94	89	6	54	96	87	60	82	76	100	17	53	67

- Dam Record: BWR 8@106, WWR 8@103
- ADG: 2.67
- Good, thick cow bull out of a pathfinder cow.



LOT 32

**32** **Simonson Renown 1869** ★  
**BULL** REG: 19548941 DOB: 02/09/19 TAT: 1869

Rito 707 of Ideal 3407 7075  
**S A V Renown 3439**  
 S A V Blackcap May 4136  
 HF Classified 10Z  
**Msar Van Pride 4340**  
 Msar Van Pride 2119

R R Rito 707  
 Ideal 3407 of 1418 076  
 S A V 8180 Traveler 004  
 S A V May 2397  
 HF Kodiak 5R  
 HF Jestress 155U  
 Msar Industry 2778  
 MSAR Van Pride 7622

<b>ANGUS</b>	
Act BW	87
Adj WW/WWR	591 / 106
Adj YW	1108

CED	BW	WW	YW	SC	MILK	MARB	RE	\$W	\$B								
2	1.9	62	109	0.3	21	0.06	0.42	58	92								
CED	BW	WW	YW	DMI	YH	SC	DOC	HP	CEM	MLK	MW	MH	CW	MARB	RE	FAT	TEND
83	57	68	37	58	41	54	20	44	68	58	63	77	46	96	84	85	23

- Dam Record: BWR 4@102, WWR 4@102
- ADG: 3.15
- Long, complete Renown son.

**33** **TMinert Renown 2199** ★  
**BULL** REG: 19564081 DOB: 02/16/19 TAT: 2199

Rito 707 of Ideal 3407 7075  
**S A V Renown 3439**  
 S A V Blackcap May 4136  
 Sitz Top Seed 539X  
**MSAR Queen Eva 254**  
 Msar Queen Eva 097

R R Rito 707  
 Ideal 3407 of 1418 076  
 S A V 8180 Traveler 004  
 S A V May 2397  
 Sitz Upward 307R  
 Sitz Eisa Evergreen 12S  
 A A R High Five 8563  
 Msar Queen Eva 897

<b>ANGUS</b>	
Act BW	95
Adj WW/WWR	603 / 108
Adj YW	1169

CED	BW	WW	YW	SC	MILK	MARB	RE	\$W	\$B								
-1	2	68	112	0.94	21	-0.25	0.72	69	91								
CED	BW	WW	YW	DMI	YH	SC	DOC	HP	CEM	MLK	MW	MH	CW	MARB	RE	FAT	TEND
91	57	38	77	85	89	85	25	34	87	54	74	77	47	100	38	46	91

- Dam Record: BWR 3@100, WWR 3@101
- ADG: 3.46
- Solid cow bull.



LOT 34

**34** **TMinert Renown 1519** ★★  
**BULL** REG: 19564082 DOB: 02/03/19 TAT: 1519

Rito 707 of Ideal 3407 7075  
**S A V Renown 3439**  
 S A V Blackcap May 4136  
 S A V Final Answer 0035  
**Msar Queen 460**  
 Msar Queen 2114

R R Rito 707  
 Ideal 3407 of 1418 076  
 S A V 8180 Traveler 004  
 S A V May 2397  
 Sitz Traveler 8180  
 S A V Emulous 8145  
 Sitz Upward 307R  
 Msar Queen 727

<b>ANGUS</b>	
Act BW	80
Adj WW/WWR	509 / 91
Adj YW	1231

CED	BW	WW	YW	SC	MILK	MARB	RE	\$W	\$B								
9	0.5	59	99	0.53	26	0.42	0.86	70	104								
CED	BW	WW	YW	DMI	YH	SC	DOC	HP	CEM	MLK	MW	MH	CW	MARB	RE	FAT	TEND
48	49	18	23	74	90	59	14	59	95	88	97	100	64	84	20	78	37

- Dam Record: BWR 3@96, WWR 3@102
- ADG: 4.40
- Good, thick bull with lighter birthweight.
- Weaning weight is recorded wrong, should be 608.

**35** **Simonson Renown 2439** ★★  
**BULL** REG: 19548968 DOB: 02/24/19 TAT: 2439

Rito 707 of Ideal 3407 7075  
**S A V Renown 3439**  
 S A V Blackcap May 4136  
 A A R High Five 8563  
**Msar Pride 479**  
 Msar Pride 579

R R Rito 707  
 Ideal 3407 of 1418 076  
 S A V 8180 Traveler 004  
 S A V May 2397  
 A A R Image Maker 6538  
 A A R Donna 6514  
 Leachman Right Time  
 Minerts Pride 679

<b>ANGUS</b>	
Act BW	85
Adj WW/WWR	605 / 109
Adj YW	

CED	BW	WW	YW	SC	MILK	MARB	RE	\$W	\$B								
7	1.5	61	106	1.1	24	0.19	0.44	64	83								
CED	BW	WW	YW	DMI	YH	SC	DOC	HP	CEM	MLK	MW	MH	CW	MARB	RE	FAT	TEND
87	91	17	46	41	47	16	63	21	53	72	44	71	45	92	70	92	24

- Dam Record: BWR 4@98, WWR 4@103
- ADG: 2.97
- Lighter birthweight Renown with good weaning.
- Little more frame.

**36** **Simonson Renown 2389** ★★  
**BULL** REG: 19548970 DOB: 02/22/19 TAT: 2389

Rito 707 of Ideal 3407 7075  
**S A V Renown 3439**  
 S A V Blackcap May 4136  
 Sitz Alliance 476P  
**Msar Pride 870**  
 Msar Pride 6520

R R Rito 707  
 Ideal 3407 of 1418 076  
 S A V 8180 Traveler 004  
 S A V May 2397  
 Sitz Alliance 9800  
 Sitz Ellunas Elite 35M  
 MSAR Future Direction 2484  
 Msar Pride 1216

<b>ANGUS</b>	
Act BW	81
Adj WW/WWR	588 / 106
Adj YW	

CED	BW	WW	YW	SC	MILK	MARB	RE	\$W	\$B								
6	0.5	55	91	-0.18	24	0.02	0.6	61	60								
CED	BW	WW	YW	DMI	YH	SC	DOC	HP	CEM	MLK	MW	MH	CW	MARB	RE	FAT	TEND
53	17	74	63	77	60	56	24	53	25	41	70	83	60	98	25	53	20

- Dam Record: BWR 10@105, WWR 10@103
- ADG: 3.23
- Light birthweight Renown out of a pathfinder cow at the age of eleven.

**37** **Simonson Renown 2159** ★★  
**BULL** REG: 19548983 DOB: 02/18/19 TAT: 2159

Rito 707 of Ideal 3407 7075  
**S A V Renown 3439**  
 S A V Blackcap May 4136  
 S A V Final Answer 0035  
**Msar Pride 369**  
 Msar Pride 279

R R Rito 707  
 Ideal 3407 of 1418 076  
 S A V 8180 Traveler 004  
 S A V May 2397  
 Sitz Traveler 8180  
 S A V Emulous 8145  
 Sitz Alliance 6595  
 Minerts Pride 679

**ANGUSGS**  
 Act BW 86  
 Adj WW/WWR 550 / 99  
 Adj YW 1140

CED	BW	WW	YW	SC	MILK	MARB	RE	\$W	\$B								
4	1.7	73	138	1.23	28	0.05	0.85	74	135								
CED	BW	WW	YW	DMI	YH	SC	DOC	HP	CEM	MLK	MW	MH	CW	MARB	RE	FAT	TEND
44	24	10	21	87	32	24	2	73	15	41	12	16	17	95	18	20	41

- Dam Record: BWR 5@100, WWR 5@100
- ADG: 3.69
- Lighter birthweight Renown.

**38** **Simonson Renown 2019** ★★★  
**BULL** REG: 19548965 DOB: 02/12/19 TAT: 2019

Rito 707 of Ideal 3407 7075  
**S A V Renown 3439**  
 S A V Blackcap May 4136  
 S A V Pioneer 7301  
**Msar Lady Grace 305**  
 Msar Lady Grace 105

R R Rito 707  
 Ideal 3407 of 1418 076  
 S A V 8180 Traveler 004  
 S A V May 2397  
 S A V Final Answer 0035  
 S A V Blackbird 5297  
 S A V Iron Mountain 8066  
 Msar Lady Grace 342

**ANGUSGS**  
 Act BW 75  
 Adj WW/WWR 571 / 103  
 Adj YW 1067

CED	BW	WW	YW	SC	MILK	MARB	RE	\$W	\$B
6	0.5	69	118	1.06	19	0.16	0.68	64	112

- Dam Record: BWR 5@100, WWR 5@101
- ADG: 3.02
- Light birthweight Renown. Good shape.

**39** **Simonson Renown 1919** ★★★  
**BULL** REG: 19548966 DOB: 02/10/19 TAT: 1919

Rito 707 of Ideal 3407 7075  
**S A V Renown 3439**  
 S A V Blackcap May 4136  
 S A V Final Answer 0035  
**Msar Blackcap 322**  
 Msar Blackcap 7640

R R Rito 707  
 Ideal 3407 of 1418 076  
 S A V 8180 Traveler 004  
 S A V May 2397  
 Sitz Traveler 8180  
 S A V Emulous 8145  
 Connealy Onstar 3213  
 Msar Blackcap 465

**ANGUSGS**  
 Act BW 79  
 Adj WW/WWR 583 / 105  
 Adj YW 1132

CED	BW	WW	YW	SC	MILK	MARB	RE	\$W	\$B								
13	-0.6	62	111	0.8	29	0.11	0.72	73	111								
CED	BW	WW	YW	DMI	YH	SC	DOC	HP	CEM	MLK	MW	MH	CW	MARB	RE	FAT	TEND
2	2	34	17	78	19	17	41	60	41	55	61	91	25	87	30	66	37

- Dam Record: BWR 5@91, WWR 5@100
- ADG: 3.34
- Light birthweight Renown.

**40** **Simonson Renown 1889** ★  
**BULL** REG: 19548967 DOB: 02/09/19 TAT: 1889

Rito 707 of Ideal 3407 7075  
**S A V Renown 3439**  
 S A V Blackcap May 4136  
 Peak Dot Iron Mountain 727Y  
**Msar Blackcap 396**  
 Msar Blackcap 9820

R R Rito 707  
 Ideal 3407 of 1418 076  
 S A V 8180 Traveler 004  
 S A V May 2397  
 S A V Iron Mountain 8066  
 Mia of Peak Dot 401T  
 Msar Shaker 2307  
 MSAR Blackcap 571

**ANGUSGS**  
 Act BW 87  
 Adj WW/WWR 571 / 103  
 Adj YW 1214

CED	BW	WW	YW	SC	MILK	MARB	RE	\$W	\$B								
-2	2.6	69	117	-0.04	24	0.23	0.64	67	118								
CED	BW	WW	YW	DMI	YH	SC	DOC	HP	CEM	MLK	MW	MH	CW	MARB	RE	FAT	TEND
97	84	48	27	76	51	90	87	78	96	88	42	86	29	77	31	11	28

- Dam Record: BWR 4@99, WWR 5@100
- ADG: 3.92
- Larger framed Renown son.

**41** **Simonson Renown 1689** ★  
**BULL** REG: 19548989 DOB: 02/06/19 TAT: 1689

Rito 707 of Ideal 3407 7075  
**S A V Renown 3439**  
 S A V Blackcap May 4136  
 Connealy Stimulus 8419  
**Msar Blackcap 0922**  
 MSAR Blackcap 576

R R Rito 707  
 Ideal 3407 of 1418 076  
 S A V 8180 Traveler 004  
 S A V May 2397  
 H A Power Alliance 1025  
 Black Creeea of Conanga 5332  
 Rito 616 of 4B20 6807  
 Msar Blackcap 971

**ANGUSGS**  
 Act BW 94  
 Adj WW/WWR 561 / 101  
 Adj YW 1089

CED	BW	WW	YW	SC	MILK	MARB	RE	\$W	\$B								
2	2.6	63	113	0.3	24	0.08	0.71	59	98								
CED	BW	WW	YW	DMI	YH	SC	DOC	HP	CEM	MLK	MW	MH	CW	MARB	RE	FAT	TEND
40	34	65	54	7	52	74	2	50	81	83	59	85	63	97	27	31	7

- Dam Record: BWR 7@103, WWR 7@105
- ADG: 3.22
- Dam is a pathfinder.

**42** **Simonson Renown 1419** ★★  
**BULL** REG: 19548969 DOB: 02/02/19 TAT: 1419

Rito 707 of Ideal 3407 7075  
**S A V Renown 3439**  
 S A V Blackcap May 4136  
 HF Tiger 5T  
**Msar Lady Eston 573**  
 Msar Lady Eston 345

R R Rito 707  
 Ideal 3407 of 1418 076  
 S A V 8180 Traveler 004  
 S A V May 2397  
 HF Kodiak 5R  
 HF Echo 84R  
 A A R High Five 8563  
 Msar Lady Eston 1045

**ANGUSGS**  
 Act BW 80  
 Adj WW/WWR 559 / 100  
 Adj YW 1101

CED	BW	WW	YW	SC	MILK	MARB	RE	\$W	\$B								
6	1.4	48	83	1.23	25	0.3	0.43	51	69								
CED	BW	WW	YW	DMI	YH	SC	DOC	HP	CEM	MLK	MW	MH	CW	MARB	RE	FAT	TEND
70	58	94	78	46	94	50	5	34	80	49	84	52	98	88	72	74	21

- Dam Record: BWR 3@94, WWR 3@106
- ADG: 3.31
- Smooth made, lighter birthweight Renown.



**43** **Simonson Renown 1819** ★★  
**BULL** REG: 19548940 DOB: 02/05/19 TAT: 1819

Rito 707 of Ideal 3407 7075  
**S A V Renown 3439**  
 S A V Blackcap May 4136  
 S A V Final Answer 0035  
**Msar Pride 327**  
 Msar Pride 127

R R Rito 707  
 Ideal 3407 of 1418 076  
 S A V 8180 Traveler 004  
 S A V May 2397  
 Sitz Traveler 8180  
 S A V Emulous 8145  
 Sitz Upward 307R  
 Msar Pride 521

**ANGUSGS**  
 Act BW 82  
 Adj WW/WWR 553 / 99  
 Adj YW 1127

CED	BW	WW	YW	SC	MILK	MARB	RE	\$W	\$B								
9	0.1	64	115	0.88	26	0.12	0.53	73	97								
CED	BW	WW	YW	DMI	YH	SC	DOC	HP	CEM	MLK	MW	MH	CW	MARB	RE	FAT	TEND
51	44	40	49	65	95	28	27	73	75	53	85	98	43	96	66	73	5

- Dam Record: BWR 5@94, WWR 5@95
- ADG: 3.50
- Smaller framed bull.

**REFERENCE SIRE**



**RS**

**Kraye Seedstock DK 768**

**BULL REG: 18971873 DOB: 02/06/2017 TAT: 768**

S A V Registry 2831  
**S A V Seedstock 4838**  
 S A V Blackcap May 4136  
 S A V Final Answer 0035  
**Queen DK 041**  
 Queen FK 871

Rito 707 of Ideal 3407 7075  
 S A V Madame Pride 0075  
 S A V 8180 Traveler 004  
 S A V May 2397  
 Sitz Traveler 8180  
 S A V Emulous 8145  
 TC Rito 416  
 Queen FK 512

CED	BW	WW	YW	SC	MILK	MARB	RE	\$W	\$B
8	1.6	63	106	1.53	21	0.21	0.44	61	98

*The only thing I don't like about the Kraye Seedstock calves is that I don't have more of them. They are good, complete cattle with great eye appeal and thickness. Excited to see more of them.*

**44 Simonson Seedstock 1179** ★

**BULL REG: 19578521 DOB: 01/29/19 TAT: 1179**

S A V Registry 2831  
**S A V Seedstock 4838**  
 S A V Blackcap May 4136  
 Connealy Industry 5634  
**Msar Pride 912**  
 Msar Pride 0462

Rito 707 of Ideal 3407 7075  
 S A V Madame Pride 0075  
 S A V 8180 Traveler 004  
 S A V May 2397  
 Connealy Freightliner  
 Eilera of Conanga 2583  
 M S A R Fame 268  
 Minerts Pride 6462

**ANGUS**<sup>GS</sup>

<b>Act BW</b>	98
<b>Adj WW/WWR</b>	541 / 97
<b>Adj YW</b>	

CED	BW	WW	YW	SC	MILK	MARB	RE	\$W	\$B								
-1	4	49	83	0.56	14	0.05	0.4	29	84								
CED	BW	WW	YW	DMI	YH	SC	DOC	HP	CEM	MLK	MW	MH	CW	MARB	RE	FAT	TEND
74	77	79	92	61	97	87	45	86	96	99	82	92	76	99	47	47	90

- Dam Record: **BWR 9@106, WWR 9@103**
- **ADG: 3.12**



**LOT 46**

**46 Simonson KSeedstock 1709** ★

**BULL REG: 19548998 DOB: 02/06/19 TAT: 1709**

S A V Seedstock 4838  
**Kraye Seedstock DK 768**  
 Queen DK 041  
 Mohnen South Dakota 402  
**Simonson Pride 5834**  
 Simonson Pride 1401

S A V Registry 2831  
 S A V Blackcap May 4136  
 S A V Final Answer 0035  
 Queen FK 871  
 Mohnen Density 730  
 Mohnen Jilt 539  
 Msar Shaker 2307  
 Simonsons Pride 994

**ANGUS**<sup>GS</sup>

<b>Act BW</b>	93
<b>Adj WW/WWR</b>	505 / 91
<b>Adj YW</b>	1223

CED	BW	WW	YW	SC	MILK	MARB	RE	\$W	\$B								
2	3.1	75	132	1.34	11	0.29	0.42	53	147								
CED	BW	WW	YW	DMI	YH	SC	DOC	HP	CEM	MLK	MW	MH	CW	MARB	RE	FAT	TEND
88	93	6	6	79	24	23	13	86	44	92	33	18	3	91	54	66	41

- Dam Record: **BWR 3@109, WWR 3@97**
- **ADG: 4.38**
- Thick and deep.

**45 Simonson KSeedstock 2139** ★★

**BULL REG: 19548955 DOB: 02/19/19 TAT: 2139**

S A V Seedstock 4838  
**Kraye Seedstock DK 768**  
 Queen DK 041  
 Connealy Onstar 3213  
**Msar Pride 7630**  
 Msar Pride 516

S A V Registry 2831  
 S A V Blackcap May 4136  
 S A V Final Answer 0035  
 Queen FK 871  
 C A Future Direction 5321  
 Runella of Conanga 775  
 Sitz Alliance 6595  
 Msar Pride 1216

**ANGUS**<sup>GS</sup>

<b>Act BW</b>	85
<b>Adj WW/WWR</b>	675 / 121
<b>Adj YW</b>	1289

CED	BW	WW	YW	SC	MILK	MARB	RE	\$W	\$B								
9	2	57	98	0.82	32	0.34	0.1	66	78								
CED	BW	WW	YW	DMI	YH	SC	DOC	HP	CEM	MLK	MW	MH	CW	MARB	RE	FAT	TEND
49	86	51	56	81	93	31	81	40	12	38	29	50	52	89	86	94	14

- Dam Record: **BWR 10@99, WWR 10@111**
- **ADG: 3.84**
- Long, stout bull out of a pathfinder cow that records 10@111. This bull weaned at 121. Good bull.

**47 Simonson KSeedstock 1659** ★★★

**BULL REG: 19550768 DOB: 02/06/19 TAT: 1659**

S A V Seedstock 4838  
**Kraye Seedstock DK 768**  
 Queen DK 041  
 Connealy Cash 941C  
**Msar Lady Eston 754**  
 Msar Lady Eston 354

S A V Registry 2831  
 S A V Blackcap May 4136  
 S A V Final Answer 0035  
 Queen FK 871  
 Barstow Cash  
 Black Ceena of Conanga 941C  
 A A R High Five 8563  
 MSAR Lady Eston 554

**ANGUS**<sup>GS</sup>

<b>Act BW</b>	72
<b>Adj WW/WWR</b>	519 / 93
<b>Adj YW</b>	1044

CED	BW	WW	YW	SC	MILK	MARB	RE	\$W	\$B								
10	0.3	64	103	1.45	16	0.24	0.32	60	85								
CED	BW	WW	YW	DMI	YH	SC	DOC	HP	CEM	MLK	MW	MH	CW	MARB	RE	FAT	TEND
51	45	45	65	79	71	18	39	82	51	100	46	35	51	90	84	97	19

- Dam Record: **BWR 1@91, WWR 1@93**
- **ADG: 3.20**
- Good heifer bull.



**50 Simonson KSeedstock 2229** ★  
**BULL REG: 19548977 DOB: 02/19/19 TAT: 2229**

S A V Seedstock 4838  
**Kraye Seedstock DK 768**  
 Queen DK 041  
 HF Who's That 7A  
**Simonson Pride 6931**  
 Simonson Pride 0302

S A V Registry 2831  
 S A V Blackcap May 4136  
 S A V Final Answer 0035  
 Queen FK 871  
 HF Tiger 5T  
 HF Lucy 317Y  
 Connealy Industry 5634  
 SIMONSON Pride 7935

<b>ANGUS</b>	
Act BW	95
Adj WW/WWR	553 / 99
Adj YW	1091

CED	BW	WW	YW	SC	MILK	MARB	RE	\$W	\$B								
7	3.1	66	114	1.25	20	0.61	0.54	57	128								
CED	BW	WW	YW	DMI	YH	SC	DOC	HP	CEM	MLK	MW	MH	CW	MARB	RE	FAT	TEND
84	99	7	13	84	89	15	62	61	70	93	37	56	18	77	45	89	16

- Dam Record: BWR 2@105, WWR 2@105
- ADG: 3.36
- Smooth made.

**48 Simonson KSeedstock 1969** ★★  
**BULL REG: 19550266 DOB: 02/10/19 TAT: 1969**

S A V Seedstock 4838  
**Kraye Seedstock DK 768**  
 Queen DK 041  
 HF Who's That 7A  
**Msar GD Blackcap 588**  
 Msar GD Blackcap 1064

S A V Registry 2831  
 S A V Blackcap May 4136  
 S A V Final Answer 0035  
 Queen FK 871  
 HF Tiger 5T  
 HF Lucy 317Y  
 S A V Final Answer 0035  
 Msar GD Blackcap 982

<b>ANGUS</b>	
Act BW	90
Adj WW/WWR	624 / 112
Adj YW	1256

CED	BW	WW	YW	SC	MILK	MARB	RE	\$W	\$B								
8	2.7	76	127	2.2	25	0.4	0.38	78	124								
CED	BW	WW	YW	DMI	YH	SC	DOC	HP	CEM	MLK	MW	MH	CW	MARB	RE	FAT	TEND
68	75	14	17	80	82	27	6	55	95	48	74	76	14	73	71	97	15

- Dam Record: BWR 3@96, WWR 3@99
- ADG: 3.86
- Long spined, well-balanced cow bull.

**49 Simonson KSeedstock 1639** ★★  
**BULL REG: 19550755 DOB: 02/07/19 TAT: 1639**

S A V Seedstock 4838  
**Kraye Seedstock DK 768**  
 Queen DK 041  
 S A V Pioneer 7301  
**Msar Pride 412**  
 Msar Pride 912

S A V Registry 2831  
 S A V Blackcap May 4136  
 S A V Final Answer 0035  
 Queen FK 871  
 S A V Final Answer 0035  
 S A V Blackbird 5297  
 Connealy Industry 5634  
 Msar Pride 0462

<b>ANGUS</b>	
Act BW	85
Adj WW/WWR	472 / 85
Adj YW	1014

CED	BW	WW	YW	SC	MILK	MARB	RE	\$W	\$B								
4	1.5	55	106	0.95	22	0.3	0.48	48	101								
CED	BW	WW	YW	DMI	YH	SC	DOC	HP	CEM	MLK	MW	MH	CW	MARB	RE	FAT	TEND
76	69	22	18	98	93	14	12	35	68	95	34	63	52	92	52	70	37

- Dam Record: BWR 4@105, WWR 4@99
- ADG: 3.31
- Heifer bull.

**51 Simonson KSeedstock 1789** ★★  
**BULL REG: 19550263 DOB: 02/07/19 TAT: 1789**

S A V Seedstock 4838  
**Kraye Seedstock DK 768**  
 Queen DK 041  
 HF Who's That 7A  
**Msar Pride 5449**  
 Msar Pride 0955

S A V Registry 2831  
 S A V Blackcap May 4136  
 S A V Final Answer 0035  
 Queen FK 871  
 HF Tiger 5T  
 HF Lucy 317Y  
 A A R High Five 8563  
 Msar Pride 816

<b>ANGUS</b>	
Act BW	80
Adj WW/WWR	538 / 97
Adj YW	1088

CED	BW	WW	YW	SC	MILK	MARB	RE	\$W	\$B								
9	1.2	64	112	1.94	25	0.35	0.28	66	123								
CED	BW	WW	YW	DMI	YH	SC	DOC	HP	CEM	MLK	MW	MH	CW	MARB	RE	FAT	TEND
81	94	25	22	86	92	5	13	50	98	58	42	62	20	91	84	84	53

- Dam Record: BWR 2@89, WWR 2@101
- ADG: 3.36
- Lighter birthweight, long, complete bull.

**52 Simonson KSeedstock 2559** ★  
**BULL REG: 19548980 DOB: 02/25/19 TAT: 2559**

S A V Seedstock 4838  
**Kraye Seedstock DK 768**  
 Queen DK 041  
 HF Kodiak 5R  
**HF Tibbie 14Z**  
 HF Tibbie 43R

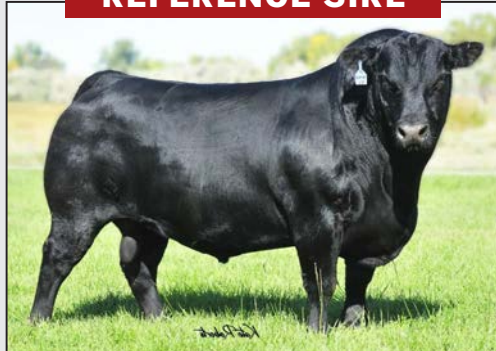
S A V Registry 2831  
 S A V Blackcap May 4136  
 S A V Final Answer 0035  
 Queen FK 871  
 Sandy Bar Advantage 43M  
 Wilbar Ruby 955N  
 HF Challenger 42N  
 HF Tibbie 37N

<b>ANGUS</b>	
Act BW	94
Adj WW/WWR	525 / 94
Adj YW	

CED	BW	WW	YW	SC	MILK	MARB	RE	\$W	\$B								
2	2.9	65	107	0.76	22	0.49	0.27	59	126								
CED	BW	WW	YW	DMI	YH	SC	DOC	HP	CEM	MLK	MW	MH	CW	MARB	RE	FAT	TEND
95	93	8	33	67	56	26	5	60	63	77	24	11	17	84	49	32	5

- Dam Record: BWR 5@105, WWR 5@99
- ADG: 3.62
- Stylish bull. Give him some time to grow. Good performance.

**REFERENCE SIRE**



**RS LD Capitalist 316**  
**BULL REG: 17666102 DOB: 01/26/2013 TAT: 316**

| S A V Final Answer 0035  
**Connealy Capitalist 028**  
 | Prides Pita of Conanga 8821  
 | C A Future Direction 5321  
**LD Dixie Erica 2053**  
 | LD Dixie Erica Oar 0853

Sitz Traveler 8180  
 S A V Emulous 8145  
 C R A Bextor 872 5205 608  
 Prides Trav of Conanga 6499  
 G A R Precision 1680  
 C A Miss Power Fix 308  
 LD Royce Onaroll 810  
 Dixie Erica of R R 8553

CED	BW	WW	YW	SC	MILK	MARB	RE	\$W	\$B
12	-0.7	68	119	0.70	30	0.56	0.55	78	148



## 56 **Simonson Capitalist 1039** ★

**BULL** REG: 19548959 DOB: 01/18/19 TAT: 1039

Connealy Capitalist 028  
**LD Capitalist 316**  
 LD Dixie Erica 2053

K Bar D Joe Canada 18Y  
**Msar GD Blackcap 7710**  
 Msar GD Blackcap 8745

S A V Final Answer 0035  
 Prides Pita of Conanga 8821  
 C A Future Direction 5321  
 LD Dixie Erica Oar 0853  
 Soo Line Alternative 9127W  
 Malsons Savannah 102W  
 Connealy Industry 5634  
 Msar GD Blackcap 196

Act BW
86
Adj WW/WWR
658 / 118
Adj YW
1180

CED	BW	WW	YW	SC	MILK	MARB	RE	\$W	\$B
3	2.1	71	122		27	0.38	0.48	69	136

- Dam Record: BWR 1@107, WWR 1@118
- ADG: 3.18



## 53 **Simonson Capitalist 1729** ★★★

**BULL** REG: 19548958 DOB: 02/06/19 TAT: 1729

Connealy Capitalist 028  
**LD Capitalist 316**  
 LD Dixie Erica 2053

HF Who's That 7A  
**Simonson Lady Eston 7045**  
 Msar Lady Eston 1045

S A V Final Answer 0035  
 Prides Pita of Conanga 8821  
 C A Future Direction 5321  
 LD Dixie Erica Oar 0853  
 HF Tiger 5T  
 HF Lucy 317Y  
 TC Aberdeen 759  
 MSAR Lady Eston 948

**ANGUSGS**

Act BW
76
Adj WW/WWR
625 / 112
Adj YW
1326

CED	BW	WW	YW	SC	MILK	MARB	RE	\$W	\$B								
9	0.1	77	137	0.26	23	0.66	0.58	79	166								
CED	BW	WW	YW	DMI	YH	SC	DOC	HP	CEM	MLK	MW	MH	CW	MARB	RE	FAT	TEND
7	20	5	12	77	75	33	90	16	48	62	29	66	3	59	25	34	37

- Dam Record: BWR 1@95, WWR 1@112
- ADG: 4.27
- Standout light birthweight bull with top ADG.

## 54 **Simonson Capitalist 1599** ★★

**BULL** REG: 19548960 DOB: 02/06/19 TAT: 1599

Connealy Capitalist 028  
**LD Capitalist 316**  
 LD Dixie Erica 2053

HF Who's That 7A  
**Msar GD Blackcap 7719**  
 Msar GD Blackcap 8745

S A V Final Answer 0035  
 Prides Pita of Conanga 8821  
 C A Future Direction 5321  
 LD Dixie Erica Oar 0853  
 HF Tiger 5T  
 HF Lucy 317Y  
 Connealy Industry 5634  
 Msar GD Blackcap 196

**ANGUSGS**

Act BW
79
Adj WW/WWR
601 / 108
Adj YW
1107

CED	BW	WW	YW	SC	MILK	MARB	RE	\$W	\$B								
2	1.2	65	110	0.85	26	0.34	0.43	69	119								
CED	BW	WW	YW	DMI	YH	SC	DOC	HP	CEM	MLK	MW	MH	CW	MARB	RE	FAT	TEND
80	57	16	39	8	91	36	71	42	89	41	30	44	35	90	50	73	36

- Dam Record: BWR 1@99, WWR 1@108
- ADG: 3.08
- Light birthweight bull.

## 55 **Simonson Capitalist 2109** ★

**BULL** REG: 19548956 DOB: 02/17/19 TAT: 2109

Connealy Capitalist 028  
**LD Capitalist 316**  
 LD Dixie Erica 2053

HF Tiger 5T  
**Msar GD Blackcap 485**  
 Msar GD Blackcap 885

S A V Final Answer 0035  
 Prides Pita of Conanga 8821  
 C A Future Direction 5321  
 LD Dixie Erica Oar 0853  
 HF Kodiak 5R  
 HF Echo 84R  
 Connealy Industry 5634  
 Msar GD Blackcap 196

**ANGUSGS**

Act BW
100
Adj WW/WWR
568 / 102
Adj YW
1126

CED	BW	WW	YW	SC	MILK	MARB	RE	\$W	\$B								
6	3.5	60	107	0.55	32	0.3	0.6	65	123								
CED	BW	WW	YW	DMI	YH	SC	DOC	HP	CEM	MLK	MW	MH	CW	MARB	RE	FAT	TEND
50	85	50	41	33	82	59	59	54	76	4	90	79	39	69	49	83	42

- Dam Record: BWR 2@121, WWR 2@96
- ADG: 3.41

## 57 **Simonson Capitalist 1169** ★★★

**BULL** REG: 19548957 DOB: 01/27/19 TAT: 1169

Connealy Capitalist 028  
**LD Capitalist 316**  
 LD Dixie Erica 2053

HF Who's That 7A  
**Simonson Blackcap 7023**  
 Msar Blackcap 223

S A V Final Answer 0035  
 Prides Pita of Conanga 8821  
 C A Future Direction 5321  
 LD Dixie Erica Oar 0853  
 HF Tiger 5T  
 HF Lucy 317Y  
 A A R High Five 8563  
 Msar Blackcap 6551

**ANGUSGS**

Act BW
71
Adj WW/WWR
650 / 117
Adj YW
1178

CED	BW	WW	YW	SC	MILK	MARB	RE	\$W	\$B								
15	-1.5	70	121	1.41	28	0.59	0.83	80	157								
CED	BW	WW	YW	DMI	YH	SC	DOC	HP	CEM	MLK	MW	MH	CW	MARB	RE	FAT	TEND
2	32	7	8	43	94	22	69	25	18	43	68	88	12	34	7	83	3

- Dam Record: BWR 1@90, WWR 1@117
- ADG: 3.22
- Standout light birthweight bull.

## 58 **Simonson Capitalist 5659** ★★★

**BULL** REG: 19548994 DOB: 01/17/19 TAT: 5659

Connealy Capitalist 028  
**LD Capitalist 316**  
 LD Dixie Erica 2053

Basin Payweight 1682  
**Msar GD Blackcap 7714**  
 Msar GD Blackcap 133

S A V Final Answer 0035  
 Prides Pita of Conanga 8821  
 C A Future Direction 5321  
 LD Dixie Erica Oar 0853  
 Basin Payweight 006S  
 21AR O Lass 7017  
 Connealy Industry 5634  
 Msar G D Blackcap 382

**ANGUSGS**

Act BW
73
Adj WW/WWR
508 / 91
Adj YW
1086

CED	BW	WW	YW	SC	MILK	MARB	RE	\$W	\$B								
10	0.8	58	105	0.62	35	0.55	0.55	74	133								
CED	BW	WW	YW	DMI	YH	SC	DOC	HP	CEM	MLK	MW	MH	CW	MARB	RE	FAT	TEND
4	16	41	30	33	77	46	71	16	28	1	67	75	15	55	33	83	34

- Dam Record: BWR 1@92, WWR 1@91
- ADG: 3.52
- Thick heifer bull.



**60 Simonson Capitalist 5609** ★★★  
**BULL REG: 19622140 DOB: 01/22/19 TAT: 5609**

Connealy Capitalist 028  
**LD Capitalist 316**  
 LD Dixie Erica 2053  
 HF Who's That 7A  
**Msar GD Blackcap 7725**  
 Msar GD Blackcap 133

S A V Final Answer 0035  
 Prides Pita of Conanga 8821  
 C A Future Direction 5321  
 LD Dixie Erica Oar 0853  
 HF Tiger 5T  
 HF Lucy 317Y  
 Connealy Industry 5634  
 Msar G D Blackcap 382

Act BW
77
Adj WW/WWR
606 / 105
Adj YW
1124

CED	BW	WW	YW	SC	MILK	MARB	RE	\$W	\$B
7	1.2	63	112		28	0.47	0.4	64	141

- Dam Record: **BWR 1@101, WWR 1@105**
- **ADG: 3.16**
- Thick heifer bull.

**59 Simonson Capitalist 1339** ★  
**BULL REG: 19548943 DOB: 02/01/19 TAT: 1339**

Connealy Capitalist 028  
**LD Capitalist 316**  
 LD Dixie Erica 2053  
 Leachman Right Time  
**MSAR Blackcap 720**  
 Msar Blackcap 233

S A V Final Answer 0035  
 Prides Pita of Conanga 8821  
 C A Future Direction 5321  
 LD Dixie Erica Oar 0853  
 N Bar Emulation EXT  
 Leachman Erica 0025  
 B C C Bushwacker 41-93  
 Msar Blackcap 971

**ANGUS**

Act BW
98
Adj WW/WWR
687 / 123
Adj YW
1225

CED	BW	WW	YW	SC	MILK	MARB	RE	\$W	\$B
2	2.5	62	106	0.35	20	0.21	0.59	54	121

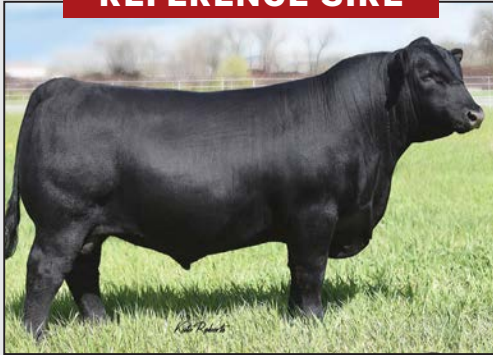
CED	BW	WW	YW	DMI	YH	SC	DOC	HP	CEM	MLK	MW	MH	CW	MARB	RE	FAT	TEND
31	32	64	82	7	59	74	58	44	30	60	52	80	71	76	43	46	21

- Dam Record: **BWR 10@106, WWR 10@104**
- **ADG: 3.28**
- Bigger framed Capitalist out of a twelve-year-old cow.
- Good performance.



Thank you to our three bosses on sale day!

**REFERENCE SIRE**



**RS Musgrave 316 Stunner**  
**BULL REG: 18467508 DOB: 02/19/2016 TAT: 1676**

Connealy Capitalist 028  
**LD Capitalist 316**  
 LD Dixie Erica 2053  
 MCATL Pure Product 903-55  
**MCATL Blackbird 831-1378**  
 MCATL Blackbird 1378-573

S A V Final Answer 0035  
 Prides Pita of Conanga 8821  
 C A Future Direction 5321  
 LD Dixie Erica Oar 0853  
 Connealy Final Product  
 M A Esta 55-252  
 Connealy Reflection  
 MA Blackbird 573

CED	BW	WW	YW	SC	MILK	MARB	RE	\$W	\$B
10	0	71	125	1.51	24	0.58	0.37	72	151

**61 Simonson Stunner 5489** ★★★  
**BULL REG: 19548963 DOB: 01/22/19 TAT: 5489**

LD Capitalist 316  
**Musgrave 316 Stunner**  
 MCATL Blackbird 831-1378  
 Connealy Arsenal 2174  
**Msar Lady Eston 771**  
 Msar Lady Eston 571

Connealy Capitalist 028  
 LD Dixie Erica 2053  
 MCATL Pure Product 903-55  
 MCATL Blackbird 1378-573  
 Connealy Packer 547  
 Black Rice of Conanga 9529  
 HF Who's That 7A  
 Msar Lady Eston 326

**ANGUS**

Act BW
72
Adj WW/WWR
673 / 121
Adj YW
1206

CED	BW	WW	YW	SC	MILK	MARB	RE	\$W	\$B
10	2	82	139	2.53	24	0.14	0.29	80	136

CED	BW	WW	YW	DMI	YH	SC	DOC	HP	CEM	MLK	MW	MH	CW	MARB	RE	FAT	TEND
15	65	7	16	5	92	3	87	5	85	24	32	55	39	90	80	80	60

- Dam Record: **BWR 1@91, WWR 1@121**
- **ADG: 3.25**
- Standout low birthweight bull with a weaning@121.



**62 Simonson Stunner 5539** ★★★  
**BULL REG: 19548961 DOB: 01/18/19 TAT: 5539**

LD Capitalist 316  
**Musgrave 316 Stunner**  
 MCATL Blackbird 831-1378

HF Who's That 7A  
**Msar Bluebird 723**  
 Msar Bluebird 427

Connealy Capitalist 028  
 LD Dixie Erica 2053  
 MCATL Pure Product 903-55  
 MCATL Blackbird 1378-573

HF Tiger 5T  
 HF Lucy 317Y  
 A A R High Five 8563  
 MSAR Bluebird 6562

**ANGUSGS**

Act BW	78
Adj WW/WWR	558 / 100
Adj YW	1096

CED	BW	WW	YW	SC	MILK	MARB	RE	\$W	\$B
10	2.1	76	128	1.29	29	0.59	0.19	82	142

CED	BW	WW	YW	DMI	YH	SC	DOC	HP	CEM	MLK	MW	MH	CW	MARB	RE	FAT	TEND
49	69	10	38	43	75	59	83	29	27	35	48	58	45	68	85	97	23

- Dam Record: BWR 1@98, WWR 1@100
- ADG: 3.28
- Heifer bull

**64 Simonson Stunner 5519** ★★★  
**BULL REG: 19548962 DOB: 01/18/19 TAT: 5519**

LD Capitalist 316  
**Musgrave 316 Stunner**  
 MCATL Blackbird 831-1378

Msar Cash 2525  
**Msar Pride 728**  
 Msar Pride 478

Connealy Capitalist 028  
 LD Dixie Erica 2053  
 MCATL Pure Product 903-55  
 MCATL Blackbird 1378-573

Barstow Cash  
 Msar Blackcap 320  
 A A R High Five 8563  
 Msar Pride 179

**ANGUSGS**

Act BW	79
Adj WW/WWR	505 / 91
Adj YW	1158

CED	BW	WW	YW	SC	MILK	MARB	RE	\$W	\$B
5	2.1	69	122	0.79	31	0.77	0.06	73	135

CED	BW	WW	YW	DMI	YH	SC	DOC	HP	CEM	MLK	MW	MH	CW	MARB	RE	FAT	TEND
81	92	6	17	30	23	44	75	2	56	21	19	30	45	27	94	100	18

- Dam Record: BWR 1@99, WWR 1@91
- ADG: 3.98
- Heifer bull

**63 Simonson Stunner 1809** ★★★  
**BULL REG: 19548945 DOB: 02/07/19 TAT: 1809**

LD Capitalist 316  
**Musgrave 316 Stunner**  
 MCATL Blackbird 831-1378

Connealy Final Product  
**Msar Lady Eston 480**  
 Msar Lady Eston 280

Connealy Capitalist 028  
 LD Dixie Erica 2053  
 MCATL Pure Product 903-55  
 MCATL Blackbird 1378-573

Connealy Product 568  
 Ebonista of Conanga 471  
 Sitz Upward 307R  
 Msar Lady Eston 280

**ANGUSGS**

Act BW	74
Adj WW/WWR	547 / 98
Adj YW	1134

CED	BW	WW	YW	SC	MILK	MARB	RE	\$W	\$B
6	0.1	56	97	0.99	33	0.63	0.37	73	124

CED	BW	WW	YW	DMI	YH	SC	DOC	HP	CEM	MLK	MW	MH	CW	MARB	RE	FAT	TEND
68	45	50	71	69	73	29	73	36	34	12	88	75	85	40	79	92	37

- Dam Record: BWR 4@93, WWR 4@99
- ADG: 3.58
- Thick, moderate framed heifer bull.

**65 TMinert Stunner 1859** ★★★  
**BULL REG: 19548988 DOB: 02/09/19 TAT: 1859**

LD Capitalist 316  
**Musgrave 316 Stunner**  
 MCATL Blackbird 831-1378

HF Who's That 7A  
**Msar Queen Eva 798**  
 Msar Queen Eva 598

Connealy Capitalist 028  
 LD Dixie Erica 2053  
 MCATL Pure Product 903-55  
 MCATL Blackbird 1378-573

HF Tiger 5T  
 HF Lucy 317Y  
 S A V Pioneer 7301  
 Msar Queen Eva 198

**ANGUSGS**

Act BW	75
Adj WW/WWR	555 / 100
Adj YW	1032

CED	BW	WW	YW	SC	MILK	MARB	RE	\$W	\$B
7	1.4	59	109	1.98	30	0.75	0.27	66	149

CED	BW	WW	YW	DMI	YH	SC	DOC	HP	CEM	MLK	MW	MH	CW	MARB	RE	FAT	TEND
15	36	28	34	47	87	3	83	11	41	10	73	76	59	36	88	97	5

- Dam Record: BWR 1@94, WWR 1@100
- ADG: 2.91
- Thick heifer bull.

**REFERENCE SIRE**



**RS Ellingson Homestead 6030** ★★★  
**BULL REG: 18543019 DOB: 02/20/2016 TAT: 6030**

Connealy Thunder  
**CTS Remedy 1T01**  
 CTS 7V03 Bellemere Maid 9T02

LT Territory 5824 of EA  
**EA Erica 1082**  
 S A V Alliance 2606

Baldrige Kaboom K243 KCF  
 Parka of Conanga 241  
 L T 598 Bando 9074  
 SVA Rita 7V03 of 1407 502  
 Sitz Tradition RLS 8702  
 EA Lucy 141  
 Sitz Alliance 6595  
 J J R Erica 18K

CED	BW	WW	YW	SC	MILK	MARB	RE	\$W	\$B
3	1.5	73	147	0.89	26	0.48	0.53	68	151



Welcome home from college, girls!

**66 Simonson Homestead 5089** ★★★  
**BULL REG: 19548942 DOB: 02/15/19 TAT: 5089**

CTS Remedy 1T01  
**Ellingson Homestead 6030**  
 EA Erica 1082

HF Done Right 32Y  
**Msar Blackcap 5431**  
 Msar Blackcap 222

Connealy Thunder  
 CTS 7V03 Bellemere Maid 9T02  
 LT Territory 5824 of EA  
 S A V Alliance 2606  
 HF Done Right 125R  
 HF Tibbie 126W  
 A A R High Five 8563  
 Msar Blackcap 0922

**ANGUSGS**

Act BW	83
Adj WW/WWR	606 / 109
Adj YW	1131

CED	BW	WW	YW	SC	MILK	MARB	RE	\$W	\$B
8	0.9	63	113	0.18	25	-0.04	0.56	65	87

CED	BW	WW	YW	DMI	YH	SC	DOC	HP	CEM	MLK	MW	MH	CW	MARB	RE	FAT	TEND
25	36	65	25	36	26	78	69	61	6	49	56	50	51	94	42	45	2

- Dam Record: BWR 2@102, WWR 2@101
- ADG: 3.20
- Heifer bull with good shape and structure that weaned@ 109.





**69 TMinert Homestead 1119** ★★  
**BULL REG: 19564209 DOB: 01/24/19 TAT: 1119**

CTS Remy 1T01  
**Ellingson Homestead 6030**  
 EA Erica 1082  
 HF Who's That 7A  
**TM Msar Queen Eva 780**  
 Msar Queen Eva 1046

Connealy Thunder  
 CTS 7V03 Bellemere Maid 9T02  
 LT Territory 5824 of EA  
 S A V Alliance 2606  
 HF Tiger 5T  
 HF Lucy 317Y  
 TC Aberdeen 759  
 Msar Queen Eva 961

**ANGUS**  
 Act BW 79  
 Adj WW/WWR 600 / 108  
 Adj YW 1182

CED	BW	WW	YW	SC	MILK	MARB	RE	\$W	\$B
1	1.4	68	127	0.11	40	0.72	0.6	82	145

CED	BW	WW	YW	DMI	YH	SC	DOC	HP	CEM	MLK	MW	MH	CW	MARB	RE	FAT	TEND
91	68	49	17	58	14	87	72	49	9	20	23	11	59	46	81	84	5

- Dam Record: BWR 1@99, WWR 1@108
- ADG: 3.55
- Bigger frame. Heifer bull with good performance.

**67 Simonson Homestead 2239** ★  
**BULL REG: 19548954 DOB: 02/20/19 TAT: 2239**

CTS Remy 1T01  
**Ellingson Homestead 6030**  
 EA Erica 1082  
 S A V Final Answer 0035  
**MSAR Lady Eston 9804**  
 Msar Lady Eston 280

Connealy Thunder  
 CTS 7V03 Bellemere Maid 9T02  
 LT Territory 5824 of EA  
 S A V Alliance 2606  
 Sitz Traveler 8180  
 S A V Emulous 8145  
 Connealy Front Page 0228  
 Msar Lady Lady Eston 0413

**Act BW** 96  
**Adj WW/WWR** 698 / 125  
**Adj YW** 1252

CED	BW	WW	YW	SC	MILK	MARB	RE	\$W	\$B
2	2	77	136	0.89	26	0.49	0.4	76	138

- Dam Record: BWR 7@101, WWR 7@102
- ADG: 3.46
- Big performer at weaning and yearling.

**70 Simonson Homestead 1829** ★  
**BULL REG: 19548953 DOB: 02/07/19 TAT: 1829**

CTS Remy 1T01  
**Ellingson Homestead 6030**  
 EA Erica 1082  
 Simonson High Five 7053  
**Msar Lady Eston 5424**  
 Msar Lady Eston 129

Connealy Thunder  
 CTS 7V03 Bellemere Maid 9T02  
 LT Territory 5824 of EA  
 S A V Alliance 2606  
 A A R High Five 8563  
 Simonson Forever 8051  
 Sitz Upward 307R  
 MSAR Lady Eston 548

**Act BW** 92  
**Adj WW/WWR** 689 / 124  
**Adj YW** 1235

CED	BW	WW	YW	SC	MILK	MARB	RE	\$W	\$B
2	2.2	80	141	0.46	27	0.33	0.4	79	136

- Dam Record: BWR 2@107, WWR 2@118
- ADG: 3.33
- Cow bull. Performed well at WW.

**68 Simonson Homestead 1209** ★  
**BULL REG: 19548952 DOB: 01/29/19 TAT: 1209**

CTS Remy 1T01  
**Ellingson Homestead 6030**  
 EA Erica 1082  
 Msar High Noon 9463  
**Msar Lady Eston 5417**  
 MSAR Lady Eston 9804

Connealy Thunder  
 CTS 7V03 Bellemere Maid 9T02  
 LT Territory 5824 of EA  
 S A V Alliance 2606  
 A A R High Five 8563  
 Msar Pride 103  
 S A V Final Answer 0035  
 Msar Lady Eston 280

**Act BW** 76  
**Adj WW/WWR** 637 / 114  
**Adj YW** 1216

CED	BW	WW	YW	SC	MILK	MARB	RE	\$W	\$B
8	-0.8	72	127	1	26	0.51	0.46	76	135

- Dam Record: BWR 3@96, WWR 3@103
- ADG: 3.54
- Performed well at weaning. Same cow family as lot 67.

**71 Simonson Homestead 2179** ★★★  
**BULL REG: 19548951 DOB: 02/19/19 TAT: 2179**

CTS Remy 1T01  
**Ellingson Homestead 6030**  
 EA Erica 1082  
 Sitz Top Seed 539X  
**Msar GD Blackcap 342**  
 Msar GD Blackcap 982

Connealy Thunder  
 CTS 7V03 Bellemere Maid 9T02  
 LT Territory 5824 of EA  
 S A V Alliance 2606  
 Sitz Upward 307R  
 Sitz Eisa Evergreen 12S  
 Msar Sheriff  
 Msar G D Blackcap 382

**ANGUS**  
 Act BW 80  
 Adj WW/WWR 527 / 95  
 Adj YW 1061

CED	BW	WW	YW	SC	MILK	MARB	RE	\$W	\$B
4	-0.1	56	105	1.26	39	0.21	0.42	75	108

CED	BW	WW	YW	DMI	YH	SC	DOC	HP	CEM	MLK	MW	MH	CW	MARB	RE	FAT	TEND
58	39	48	47	66	68	38	48	24	2	21	93	76	22	89	71	93	23

- Dam Record: BWR 3@97, WWR 3@92
- ADG: 3.34
- Heifer bull

**REFERENCE SIRE**



**RS K C F Bennett Fortress** ★★  
**BULL REG: 17259012 DOB: 09/25/2011 TAT: Y331**

| KMK Alliance 6595 I87  
**Connealy Consensus**  
 | Blinda of Conanga 004  
 | S S Objective T510 OT26  
**Thomas Patricia 9705**  
 | Thomas Patricia 71138

Sitz Alliance 6595  
 G A R Ext 916  
 Rito 616 of 4B20 6807  
 Blinda of Conanga 129  
 S S Traveler 6807 T510  
 S S Miss Rita R011 7R8  
 G A R Predestined  
 Thomas Patricia 2626

CED	BW	WW	YW	SC	MILK	MARB	RE	\$W	\$B
9	0.3	77	137	0.82	25	0.65	0.76	91	149



**72** **Simonson Fortress 5459** ★★  
**BULL REG: 19562356 DOB: 01/23/19 TAT: 5459**

Connealy Consensus  
**K C F Bennett Fortress**  
 Thomas Patricia 9705

S A V Resource 1441  
**Msar Pride 729**  
 Msar Pride 410

KMK Alliance 6595 I87  
 Blinda of Conanga 004  
 S S Objective T510 OT26  
 Thomas Patricia 71138  
 Rito 707 of Ideal 3407 7075  
 S A V Blackcap May 4136  
 HF Done Right 32Y  
 Msar Pride 110

**ANGUS**  
 Act BW 83  
 Adj WW/WWR 625 / 112  
 Adj YW 1179

CED	BW	WW	YW	SC	MILK	MARB	RE	\$W	\$B								
4	2.2	74	126	1.48	26	0.51	0.57	77	132								
CED	BW	WW	YW	DMI	YH	SC	DOC	HP	CEM	MLK	MW	MH	CW	MARB	RE	FAT	TEND
94	93	30	14	39	13	26	88	93	97	57	47	64	31	70	44	25	76

- Dam Record: BWR 1@103, WWR 1@112
- ADG: 3.38
- On the edge heifer bull with a weaning@112.

**73** **Simonson Fortress 5479** ★★★  
**BULL REG: 19562353 DOB: 01/24/19 TAT: 5479**

Connealy Consensus  
**K C F Bennett Fortress**  
 Thomas Patricia 9705

S A V Resource 1441  
**Msar GD Blackcap 731**  
 Msar GD Blackcap 331

KMK Alliance 6595 I87  
 Blinda of Conanga 004  
 S S Objective T510 OT26  
 Thomas Patricia 71138  
 Rito 707 of Ideal 3407 7075  
 S A V Blackcap May 4136  
 Sitz Top Seed 539X  
 Msar GD Blackcap 131

**ANGUS**  
 Act BW 75  
 Adj WW/WWR 607 / 109  
 Adj YW 1213

CED	BW	WW	YW	SC	MILK	MARB	RE	\$W	\$B
8	0.2	76	134		24	0.41	0.74	73	141

- Dam Record: BWR 1@94, WWR 1@109
- ADG: 3.70
- Heifer bull with good weaning@109.

**74** **Simonson Fortress 1669** ★★★  
**BULL REG: 19562350 DOB: 02/06/19 TAT: 1669**

Connealy Consensus  
**K C F Bennett Fortress**  
 Thomas Patricia 9705

BSF Hot Lotto 1401  
**Msar Edella 709**  
 Msar Edella 309

KMK Alliance 6595 I87  
 Blinda of Conanga 004  
 S S Objective T510 OT26  
 Thomas Patricia 71138  
 Barstow Cash  
 BSF Princess EL Cap W2  
 HF Done Right 32Y  
 Msar Edella 909

**ANGUS**  
 Act BW 72  
 Adj WW/WWR 570 / 102  
 Adj YW 1200

CED	BW	WW	YW	SC	MILK	MARB	RE	\$W	\$B
8	1.1	68	118		24	0.56	0.64	66	141

- Dam Record: BWR 1@91, WWR 1@102
- ADG: 3.85
- Larger framed heifer bull.

**75** **Simonson Fortress 1139** ★  
**BULL REG: 19562344 DOB: 01/24/19 TAT: 1139**

Connealy Consensus  
**K C F Bennett Fortress**  
 Thomas Patricia 9705

Msar Cash 2525  
**Msar Pride 779**  
 Msar Pride 479

KMK Alliance 6595 I87  
 Blinda of Conanga 004  
 S S Objective T510 OT26  
 Thomas Patricia 71138  
 Barstow Cash  
 Msar Blackcap 320  
 A A R High Five 8563  
 Msar Pride 579

**ANGUS**  
 Act BW 89  
 Adj WW/WWR 625 / 112  
 Adj YW 1257

CED	BW	WW	YW	SC	MILK	MARB	RE	\$W	\$B								
3	2.6	70	122	1.28	23	0.69	0.54	68	135								
CED	BW	WW	YW	DMI	YH	SC	DOC	HP	CEM	MLK	MW	MH	CW	MARB	RE	FAT	TEND
80	86	17	53	42	48	49	73	89	94	52	63	72	73	54	65	42	91

- Dam Record: BWR 1@110, WWR 1@112
- ADG: 3.86
- Larger framed, long, stylish bull.



**76** **Simonson Fortress 5419** ★★★  
**BULL REG: 19562373 DOB: 01/18/19 TAT: 5419**

Connealy Consensus  
**K C F Bennett Fortress**  
 Thomas Patricia 9705

Connealy Cash 941C  
**Msar Pride 735**  
 Msar Pride 534

KMK Alliance 6595 I87  
 Blinda of Conanga 004  
 S S Objective T510 OT26  
 Thomas Patricia 71138  
 Barstow Cash  
 Black Ceena of Conanga 941C  
 Sitz Top Seed 539X  
 Msar Pride 034

**ANGUS**  
 Act BW 71  
 Adj WW/WWR 611 / 110  
 Adj YW 1313

CED	BW	WW	YW	SC	MILK	MARB	RE	\$W	\$B								
13	0.8	79	139	1.43	30	0.24	0.58	90	136								
CED	BW	WW	YW	DMI	YH	SC	DOC	HP	CEM	MLK	MW	MH	CW	MARB	RE	FAT	TEND
32	39	15	16	79	25	41	66	94	42	27	52	48	34	87	46	14	98

- Dam Record: BWR 1@90, WWR 1@110
- ADG: 4.29
- Heifer bull with good weaning and yearling.



**77** **Simonson Fortress 5529** ★★

**BULL** REG: 19562371 DOB: 01/22/19 TAT: 5529

Connealy Consensus  
**K C F Bennett Fortress**  
 Thomas Patricia 9705  
 Sitz Top Seed 539X  
**Msar Pride 738**  
 Msar Pride 338

KMK Alliance 6595 I87  
 Blinda of Conanga 004  
 S S Objective T510 0T26  
 Thomas Patricia 71138  
 Sitz Upward 307R  
 Sitz Eisa Evergreen 12S  
 S A V Pioneer 7301  
 Msar Pride 029

**ANGUS**<sup>GS</sup>

Act BW
77
Adj WW/WWR
535 / 96
Adj YW
1170

CED	BW	WW	YW	SC	MILK	MARB	RE	\$W	\$B								
3	2.4	75	131	2.09	32	0.38	0.53	87	133								
CED	BW	WW	YW	DMI	YH	SC	DOC	HP	CEM	MLK	MW	MH	CW	MARB	RE	FAT	TEND
90	96	3	5	71	69	6	89	58	78	12	60	53	21	72	50	32	69

- Dam Record: BWR 1@97, WWR 1@96
- ADG: 3.87
- Heifer Bull.



**80** **Simonson Ace 1929** ★★★

**BULL** REG: 19548939 DOB: 02/10/19 TAT: 1929

Musgrave Aviator  
**4M Ace 709**  
 KGM Enchantress 4054  
 HF Who's That 7A  
**Msar Pride 501**  
 Msar Pride 1001

Koupals B&B Identity  
 MCATL Forever Lady 1429-138  
 S A V Bismarck 5682  
 Lazy JB Enchantress 275  
 HF Tiger 5T  
 HF Lucy 317Y  
 Connealy Industry 5634  
 M S A R Pride 868

**ANGUS**<sup>GS</sup>

Act BW
77
Adj WW/WWR
574 / 103
Adj YW
1080

CED	BW	WW	YW	SC	MILK	MARB	RE	\$W	\$B								
12	-1.2	58	110	0.3	22	-0.02	0.78	55	137								
CED	BW	WW	YW	DMI	YH	SC	DOC	HP	CEM	MLK	MW	MH	CW	MARB	RE	FAT	TEND
26	17	42	28	9	73	60	16	47	45	61	76	57	23	97	26	61	40

- Dam Record: BWR 2@90, WWR 2@101
- ADG: 3.09
- Good, complete heifer bull with weaning@103.

**78** **TMinert Fortress 1129** ★★

**BULL** REG: 19562351 DOB: 01/24/19 TAT: 1129

Connealy Consensus  
**K C F Bennett Fortress**  
 Thomas Patricia 9705  
 BSF Hot Lotto 1401  
**TM Msar Queen Eva 713**  
 Msar Queen Eva 426

KMK Alliance 6595 I87  
 Blinda of Conanga 004  
 S S Objective T510 0T26  
 Thomas Patricia 71138  
 Barstow Cash  
 BSF Princess EL Cap W2  
 A A R High Five 8563  
 Msar Queen Eva 6557

**ANGUS**<sup>GS</sup>

Act BW
85
Adj WW/WWR
534 / 96
Adj YW
1112

CED	BW	WW	YW	SC	MILK	MARB	RE	\$W	\$B								
3	2.5	78	124	0.78	28	0.85	0.5	87	139								
CED	BW	WW	YW	DMI	YH	SC	DOC	HP	CEM	MLK	MW	MH	CW	MARB	RE	FAT	TEND
66	82	2	34	86	37	42	93	97	80	62	56	45	24	35	50	50	90

- Dam Record: BWR 1@106, WWR 1@96
- ADG: 3.52



**81** **Simonson Ace 4039** ★★★

**BULL** REG: 19548982 DOB: 01/29/19 TAT: 4039

Musgrave Aviator  
**4M Ace 709**  
 KGM Enchantress 4054  
 S A V Pioneer 7301  
**Simonson Lady Eston 349**  
 Msar Lady Eston 949

Koupals B&B Identity  
 MCATL Forever Lady 1429-138  
 S A V Bismarck 5682  
 Lazy JB Enchantress 275  
 S A V Final Answer 0035  
 S A V Blackbird 5297  
 Connealy Industry 5634  
 MSAR Lady Eston 649

**ANGUS**<sup>GS</sup>

Act BW
75
Adj WW/WWR
486 / 87
Adj YW
1121

CED	BW	WW	YW	SC	MILK	MARB	RE	\$W	\$B								
9	-0.6	57	104	0.64	26	-0.01	0.86	64	126								
CED	BW	WW	YW	DMI	YH	SC	DOC	HP	CEM	MLK	MW	MH	CW	MARB	RE	FAT	TEND
45	19	78	85	3	99	35	53	26	61	44	77	96	85	99	22	49	3

- Dam Record: BWR 5@100, WWR 5@98
- ADG: 3.87
- Heifer Bull.

**79** **Simonson Fortress 5499** ★★★

**BULL** REG: 19562375 DOB: 01/18/19 TAT: 5499

Connealy Consensus  
**K C F Bennett Fortress**  
 Thomas Patricia 9705  
 Sitz Top Seed 539X  
**Msar Blackcap 711**  
 Msar Blackcap 511

KMK Alliance 6595 I87  
 Blinda of Conanga 004  
 S S Objective T510 0T26  
 Thomas Patricia 71138  
 Sitz Upward 307R  
 Sitz Eisa Evergreen 12S  
 A A R High Five 8563  
 Msar Blackcap 211

**ANGUS**<sup>GS</sup>

Act BW
75
Adj WW/WWR
547 / 98
Adj YW
1024

CED	BW	WW	YW	SC	MILK	MARB	RE	\$W	\$B								
6	1.7	71	112	0.33	24	0.23	0.26	79	78								
CED	BW	WW	YW	DMI	YH	SC	DOC	HP	CEM	MLK	MW	MH	CW	MARB	RE	FAT	TEND
53	85	10	32	61	76	76	19	40	92	21	61	40	75	93	80	16	97

- Dam Record: BWR 1@94, WWR 1@98
- ADG: 2.91
- Heifer bull.

## 82 **Simonson Ace 1429** ★

**BULL REG: 19548946 DOB: 02/02/19 TAT: 1429**

Musgrave Aviator  
**4M Ace 709**  
 KGM Enchantress 4054  
 A A R High Five 8563  
**Msar Pride 081**  
 Msar Pride 881

Koupals B&B Identity  
 MCATL Forever Lady 1429-138  
 S A V Bismarck 5682  
 Lazy JB Enchantress 275  
 A A R Image Maker 6538  
 A A R Donna 6514  
 Connealy Industry 5634  
 Msar Pride 081

<b>ANGUS</b>	
Act BW	96
Adj WW/WWR	625 / 112
Adj YW	1140

CED	BW	WW	YW	SC	MILK	MARB	RE	\$W	\$B								
7	2.7	78	131	0.92	25	0.18	0.45	77	111								
CED	BW	WW	YW	DMI	YH	SC	DOC	HP	CEM	MLK	MW	MH	CW	MARB	RE	FAT	TEND
37	70	6	35	8	67	20	9	32	14	21	14	35	20	76	65	84	13

- Dam Record: BWR 7@101, WWR 7@102
- ADG: 3.14
- Thick cow bull out of a pathfinder dam that has 7@102.



LOT 85

## 83 **Simonson Ace 1739** ★

**BULL REG: 19548947 DOB: 02/07/19 TAT: 1739**

Musgrave Aviator  
**4M Ace 709**  
 KGM Enchantress 4054  
 S A V Resource 1441  
**Simonson Pride 7102**  
 Simonson Pride 9202

Koupals B&B Identity  
 MCATL Forever Lady 1429-138  
 S A V Bismarck 5682  
 Lazy JB Enchantress 275  
 Rito 707 of Ideal 3407 7075  
 S A V Blackcap May 4136  
 B C Matrix 4132  
 Bar S PRIDE 4246

<b>ANGUS</b>	
Act BW	87
Adj WW/WWR	625 / 112
Adj YW	1211

CED	BW	WW	YW	SC	MILK	MARB	RE	\$W	\$B								
-1	4.2	87	147	1.26	25	0.25	0.93	82	142								
CED	BW	WW	YW	DMI	YH	SC	DOC	HP	CEM	MLK	MW	MH	CW	MARB	RE	FAT	TEND
45	68	6	30	79	24	69	34	44	29	73	35	21	15	78	11	93	37

- Dam Record: BWR 1@108, WWR 1@112
- ADG: 3.57
- Cow bull



LOT 84

## 85 **Simonson Seedstock 1409** ★

**BULL REG: 19578486 DOB: 02/02/19 TAT: 1409**

S A V Registry 2831  
**S A V Seedstock 4838**  
 S A V Blackcap May 4136  
 A A R High Five 8563  
**Msar Blackcap 348**  
 Msar Blackcap 170

Rito 707 of Ideal 3407 7075  
 S A V Madame Pride 0075  
 S A V 8180 Traveler 004  
 S A V May 2397  
 A A R Image Maker 6538  
 A A R Donna 6514  
 Sitz Upward 307R  
 Msar Blackcap 170

<b>ANGUS</b>	
Act BW	90
Adj WW/WWR	599 / 108
Adj YW	1116

CED	BW	WW	YW	SC	MILK	MARB	RE	\$W	\$B								
7	1.5	45	77	0.83	15	0.3	0.23	34	82								
CED	BW	WW	YW	DMI	YH	SC	DOC	HP	CEM	MLK	MW	MH	CW	MARB	RE	FAT	TEND
17	29	93	96	72	91	37	68	43	82	79	76	77	98	84	95	97	77

- Dam Record: BWR 4@96, WWR 4@93
- ADG: 3.15
- Thick, moderate frame.



LOT 86

## 84 **Simonson Seedstock 1499** ★

**BULL REG: 19578471 DOB: 02/03/19 TAT: 1499**

S A V Registry 2831  
**S A V Seedstock 4838**  
 S A V Blackcap May 4136  
 HF Who's That 7A  
**Msar GD Blackcap 531**  
 Msar GD Blackcap 331

Rito 707 of Ideal 3407 7075  
 S A V Madame Pride 0075  
 S A V 8180 Traveler 004  
 S A V May 2397  
 HF Tiger 5T  
 HF Lucy 317Y  
 Sitz Top Seed 539X  
 Msar GD Blackcap 131

<b>ANGUS</b>	
Act BW	101
Adj WW/WWR	634 / 114
Adj YW	1290

CED	BW	WW	YW	SC	MILK	MARB	RE	\$W	\$B								
2	3.7	62	114	0.31	26	0.19	0.26	58	112								
CED	BW	WW	YW	DMI	YH	SC	DOC	HP	CEM	MLK	MW	MH	CW	MARB	RE	FAT	TEND
49	39	60	86	78	100	64	63	67	73	73	94	94	40	99	82	65	72

- Dam Record: BWR 3@106, WWR 3@107
- ADG: 4.00
- Thick and deep that ratioed 114@ weaning and yearling.

## 86 **Simonson Seedstock 1789** ★

**BULL REG: 19578472 DOB: 02/02/19 TAT: 1469**

S A V Registry 2831  
**S A V Seedstock 4838**  
 S A V Blackcap May 4136  
 Sitz Top Seed 539X  
**Msar Blackcap 515**  
 Msar Blackcap 315

Rito 707 of Ideal 3407 7075  
 S A V Madame Pride 0075  
 S A V 8180 Traveler 004  
 S A V May 2397  
 Sitz Upward 307R  
 Sitz Eisa Evergreen 12S  
 S A V Final Answer 0035  
 Msar Blackcap 7611

<b>ANGUS</b>	
Act BW	92
Adj WW/WWR	604 / 108
Adj YW	1210

CED	BW	WW	YW	SC	MILK	MARB	RE	\$W	\$B								
4	2.7	73	125	0.45	19	0.13	0.84	64	134								
CED	BW	WW	YW	DMI	YH	SC	DOC	HP	CEM	MLK	MW	MH	CW	MARB	RE	FAT	TEND
64	75	15	19	63	73	62	72	56	78	78	71	83	10	95	20	68	86

- Dam Record: BWR 2@106, WWR 2@102
- ADG: 3.70
- Solid at weaning and yearling.

**87** **Simonson Seedstock 1329** ★★  
**BULL** REG: 19578473 DOB: 02/01/19 TAT: 1329

S A V Registry 2831  
**S A V Seedstock 4838**  
 S A V Blackcap May 4136  
 A A R High Five 8563  
**Msar Blackcap 511**  
 Msar Blackcap 211

Rito 707 of Ideal 3407 7075  
 S A V Madame Pride 0075  
 S A V 8180 Traveler 004  
 S A V May 2397  
 A A R Image Maker 6538  
 A A R Donna 6514  
 Sitz Top Seed 539X  
 Msar Blackcap 7611

<b>ANGUS</b>	
Act BW	89
Adj WW/WWR	537 / 96
Adj YW	1115

CED	BW	WW	YW	SC	MILK	MARB	RE	\$W	\$B								
7	1.4	66	111	0.96	12	0.12	0.51	53	96								
CED	BW	WW	YW	DMI	YH	SC	DOC	HP	CEM	MLK	MW	MH	CW	MARB	RE	FAT	TEND
8	12	5	29	68	91	82	9	14	28	84	24	26	40	96	61	85	70

- Dam Record: BWR 3@101, WWR 3@102
- ADG: 3.52

**88** **Commercial 1269** ★★★  
**BULL** REG: NA DOB: 01/30/19 TAT: 1269

S A V Registry 2831  
**S A V Seedstock 4838**  
 S A V Blackcap May 4136  
 Barstow Cash  
 Msar GD Blackcap 330

Rito 707 of Ideal 3407 7075  
 S A V Madame Pride 0075  
 S A V 8180 Traveler 004  
 S A V May 2397  
 Sitz Dash 10277  
 Barstow Queen W16  
 Sitz Top Seed 539X  
 Msar GD Blackcap 886

<b>ANGUS</b>	
Act BW	72
Adj WW/WWR	483 / 100
Adj YW	1061

CED	BW	WW	YW	SC	MILK	MARB	RE	\$W	\$B								
76	49	42	63	90	100	35	25	39	100	100	63	81	39	98	64	65	61

- Dam Record: BWR 1@100, WWR 1@100
- ADG: 3.61
- Lighter birth. Seedstock sire and Barstow Cash dam.
- Selling commercial.



**90** **TMinert Seedstock 1609** ★  
**BULL** REG: 19578474 DOB: 02/06/19 TAT: 1609

S A V Registry 2831  
**S A V Seedstock 4838**  
 S A V Blackcap May 4136  
 Peak Dot Iron Mountain 727Y  
**MSAR Queen 3218**  
 Msar Queen 044

Rito 707 of Ideal 3407 7075  
 S A V Madame Pride 0075  
 S A V 8180 Traveler 004  
 S A V May 2397  
 S A V Iron Mountain 8066  
 Mia of Peak Dot 401T  
 Connealy Industry 5634  
 Msar Queen 7644

<b>ANGUS</b>	
Act BW	114
Adj WW/WWR	564 / 101
Adj YW	1191

CED	BW	WW	YW	SC	MILK	MARB	RE	\$W	\$B								
-9	6.5	70	120	0.42	15	-0.17	0.99	41	131								
CED	BW	WW	YW	DMI	YH	SC	DOC	HP	CEM	MLK	MW	MH	CW	MARB	RE	FAT	TEND
88	76	29	72	56	40	72	67	59	88	98	11	19	31	100	8	4	76

- Dam Record: BWR 5@105, WWR 5@100
- ADG: 3.82
- Thick, smaller framed.

**91** **Simonson Seedstock 1899** ★  
**BULL** REG: 19578512 DOB: 02/09/19 TAT: 1899

S A V Registry 2831  
**S A V Seedstock 4838**  
 S A V Blackcap May 4136  
 S Elevate 9165  
**Msar GD Blackcap 292**  
 Msar GD Blackcap 192

Rito 707 of Ideal 3407 7075  
 S A V Madame Pride 0075  
 S A V 8180 Traveler 004  
 S A V May 2397  
 GDAR Game Day 449  
 S Dina 4116  
 Sitz Traveler 8180  
 M A R G D Blackcap 491

<b>ANGUS</b>	
Act BW	92
Adj WW/WWR	579 / 104
Adj YW	1072

CED	BW	WW	YW	SC	MILK	MARB	RE	\$W	\$B								
0	3.8	59	102	0.65	16	0.12	0.69	44	115								
CED	BW	WW	YW	DMI	YH	SC	DOC	HP	CEM	MLK	MW	MH	CW	MARB	RE	FAT	TEND
47	46	47	65	45	73	41	22	36	92	99	92	97	73	85	62	39	53

- Dam Record: BWR 6@103, WWR 6@101
- ADG: 3.01
- Smooth shouldered bull.



**89** **Simonson Seedstock 1589** ★  
**BULL** REG: 19578477 DOB: 02/06/19 TAT: 1589

S A V Registry 2831  
**S A V Seedstock 4838**  
 S A V Blackcap May 4136  
 S A V 004 Predominant 4438  
**Simonson Pride 4733**  
 Simonson Pride 9200

Rito 707 of Ideal 3407 7075  
 S A V Madame Pride 0075  
 S A V 8180 Traveler 004  
 S A V May 2397  
 S A V 8180 Traveler 004  
 S A V Emblynette 1182  
 B C Matrix 4132  
 Bar S PRIDE 4246

<b>ANGUS</b>	
Act BW	98
Adj WW/WWR	611 / 110
Adj YW	1230

CED	BW	WW	YW	SC	MILK	MARB	RE	\$W	\$B								
1	3.1	67	121	0.88	21	-0.02	0.92	57	122								
CED	BW	WW	YW	DMI	YH	SC	DOC	HP	CEM	MLK	MW	MH	CW	MARB	RE	FAT	TEND
58	71	24	18	64	55	60	60	65	98	96	25	16	46	97	25	25	53

- Dam Record: BWR 4@102, WWR 4@105
- ADG: 3.78
- Longer and bigger frame. Ear infected from tag.

**92** **Simonson SWho's That 5019** ★★  
**BULL** REG: 19550270 DOB: 02/15/19 TAT: 5019

HF Who's That 7A  
**Simonson Who's That 1216**  
 Simonson Pride 1440  
 A A R High Five 8563  
**Msar Bluebird 427**  
 MSAR Bluebird 6562

HF Tiger 5T  
 HF Lucy 317Y  
 Msar Final Answer 2019  
 Simonson Pride 8067  
 A A R Image Maker 6538  
 A A R Donna 6514  
 Connealy Front Page 0228  
 M S A R Bluebird 1212

<b>ANGUS</b>	
Act BW	86
Adj WW/WWR	536 / 96
Adj YW	1202

CED	BW	WW	YW	SC	MILK	MARB	RE	\$W	\$B								
11	0.8	68	112	1.42	22	0.08	0.4	70	98								
CED	BW	WW	YW	DMI	YH	SC	DOC	HP	CEM	MLK	MW	MH	CW	MARB	RE	FAT	TEND
14	41	10	12	62	96	20	5	13	86	33	33	32	13	93	50	95	28

- Dam Record: BWR 3@104, WWR 3@106
- ADG: 4.06
- Long, nice bull with wrong weaning weight, should be 630.
- Don't overlook!



LOT 93

**93 TMinert SWho's That 2269** ★  
**BULL REG: 19550269 DOB: 02/20/19 TAT: 2269**

HF Who's That 7A  
**Simonson Who's That 1216**  
 Simonson Pride 1440  
 A A R High Five 8563  
**Msar Queen Eva 355**  
 Msar Queen Eva 199

HF Tiger 5T  
 HF Lucy 317Y  
 Msar Final Answer 2019  
 Simonson Pride 8067  
 A A R Image Maker 6538  
 A A R Donna 6514  
 S A V Final Answer 0035  
 Msar Queen Eva 988

**ANGUS**  
 Act BW  
 101  
 Adj WW/WWR  
 555 / 100  
 Adj YW  
 1181

CED	BW	WW	YW	SC	MILK	MARB	RE	\$W	\$B								
6	3.5	67	117	1.74	19	0.33	0.16	55	108								
CED	BW	WW	YW	DMI	YH	SC	DOC	HP	CEM	MLK	MW	MH	CW	MARB	RE	FAT	TEND
89	92	10	16	36	74	15	22	65	83	85	25	37	50	73	80	66	2

- Dam Record: BWR 4@110, WWR 4@108
- ADG: 3.91
- Deep, good bull.



LOT 94

**94 Simonson SWho's That 2119** ★  
**BULL REG: 19550260 DOB: 02/17/19 TAT: 2119**

HF Who's That 7A  
**Simonson Who's That 1216**  
 Simonson Pride 1440  
 A A R High Five 8563  
**Msar Blackcap 320**  
 MSAR Blackcap 720

HF Tiger 5T  
 HF Lucy 317Y  
 Msar Final Answer 2019  
 Simonson Pride 8067  
 A A R Image Maker 6538  
 A A R Donna 6514  
 Leachman Right Time  
 Msar Blackcap 233

**ANGUS**  
 Act BW  
 107  
 Adj WW/WWR  
 623 / 112  
 Adj YW  
 1143

CED	BW	WW	YW	SC	MILK	MARB	RE	\$W	\$B								
-1	3.8	72	115	1.45	22	0.3	0.65	68	124								
CED	BW	WW	YW	DMI	YH	SC	DOC	HP	CEM	MLK	MW	MH	CW	MARB	RE	FAT	TEND
94	97	7	30	40	70	14	53	20	98	81	53	56	28	84	40	32	19

- Dam Record: BWR 5@107, WWR 5@106
- ADG: 3.17
- A lot of performance in the cow family.

**95 Simonson SWho's That 2709** ★★  
**BULL REG: 19548981 DOB: 03/08/19 TAT: 2709**

HF Who's That 7A  
**Simonson Who's That 1216**  
 Simonson Pride 1440  
 A A R High Five 8563  
**Msar Pride 207**  
 Msar Pride 907

HF Tiger 5T  
 HF Lucy 317Y  
 Msar Final Answer 2019  
 Simonson Pride 8067  
 A A R Image Maker 6538  
 A A R Donna 6514  
 Connealy Industry 5634  
 Msar Pride 407

**ANGUS**  
 Act BW  
 87  
 Adj WW/WWR  
 548 / 98  
 Adj YW

CED	BW	WW	YW	SC	MILK	MARB	RE	\$W	\$B								
12	1.2	62	103	0.52	25	0.27	0.4	67	97								
CED	BW	WW	YW	DMI	YH	SC	DOC	HP	CEM	MLK	MW	MH	CW	MARB	RE	FAT	TEND
47	93	12	27	44	24	73	50	51	62	23	21	23	43	80	56	58	44

- Dam Record: BWR 6@99, WWR 6@104
- ADG: 3.42
- Pathfinder cow 6@104. Younger, smooth, solid bull.



LOT 96

**96 Simonson Who's That 2189** ★★  
**BULL REG: 19548938 DOB: 02/19/19 TAT: 2189**

HF Tiger 5T  
**HF Who's That 7A**  
 HF Lucy 317Y  
 S A V Pioneer 7301  
**Msar GD Blackcap 386**  
 Msar GD Blackcap 086

HF Kodiak 5R  
 HF Echo 84R  
 Duff 927K Movin Up 874  
 HF Lucy 106M  
 S A V Final Answer 0035  
 S A V Blackbird 5297  
 A A R High Five 8563  
 Msar GD Blackcap 8745

**ANGUS**  
 Act BW  
 90  
 Adj WW/WWR  
 574 / 103  
 Adj YW  
 1161

CED	BW	WW	YW	SC	MILK	MARB	RE	\$W	\$B								
7	1.4	61	102	0.52	18	0.24	0.18	58	132								
CED	BW	WW	YW	DMI	YH	SC	DOC	HP	CEM	MLK	MW	MH	CW	MARB	RE	FAT	TEND
80	79	55	70	1	94	72	58	99	93	65	87	78	59	93	93	83	50

- Dam Record: BWR 4@94, WWR 4@94
- ADG: 3.67
- Thick and deep Who's That son.

**97 Simonson Who's That 5469** ★  
**BULL REG: 19623895 DOB: 03/18/19 TAT: 5469**

HF Tiger 5T  
**HF Who's That 7A**  
 HF Lucy 317Y  
 A A R High Five 8563  
**Msar Pride 541**  
 Msar Pride 341

HF Kodiak 5R  
 HF Echo 84R  
 Duff 927K Movin Up 874  
 HF Lucy 106M  
 A A R Image Maker 6538  
 A A R Donna 6514  
 Sitz Top Seed 539X  
 Msar Pride 6541

**ANGUS**  
 Act BW  
 90  
 Adj WW/WWR  
 595 / 107  
 Adj YW

CED	BW	WW	YW	SC	MILK	MARB	RE	\$W	\$B
4	3	70	125		24	0.27	0.38	60	140

- Dam Record: BWR 3@101, WWR 3@97
- ADG: 3.88
- Younger, deep bull.



REF SIRE - HF WHO'S THAT 7A



LOT 99



LOT 98

**99** **Simonson MCash 2409** ★★★  
**BULL** REG: 19550267 DOB: 02/23/19 TAT: 2409

Barstow Cash  
**Msar Cash 2525**  
 Msar Blackcap 320  
 Msar Final Answer 2019  
**Simonson Edella 3647**  
 Simonson Edella 0327

Sitz Dash 10277  
 Barstow Queen W16  
 A A R High Five 8563  
 MSAR Blackcap 720  
 S A V Final Answer 0035  
 MSAR Lady Eston 526  
 Msar Shaker 2307  
 Simonson Edella 4620

<b>ANGUSGS</b>	
Act BW	77
Adj WW/WWR	626 / 112
Adj YW	

CED	BW	WW	YW	SC	MILK	MARB	RE	\$W	\$B								
11	-0.2	74	129	0.58	16	0.89	0.24	65	138								
CED	BW	WW	YW	DMI	YH	SC	DOC	HP	CEM	MLK	MW	MH	CW	MARB	RE	FAT	TEND
49	55	7	39	84	3	74	1	26	23	99	14	12	44	30	83	66	80

- Dam Record: BWR 5@90, WWR 5@104
- ADG: 3.48
- Heifer bull with good performance.

**98** **Simonson MCash 2629** ★  
**BULL** REG: 19550241 DOB: 02/28/19 TAT: 2629

Barstow Cash  
**Msar Cash 2525**  
 Msar Blackcap 320  
 A A R High Five 8563  
**Simonson Pride 3645**  
 Simonson Pride 1440

Sitz Dash 10277  
 Barstow Queen W16  
 A A R High Five 8563  
 MSAR Blackcap 720  
 A A R Image Maker 6538  
 A A R Donna 6514  
 Msar Final Answer 2019  
 Simonson Pride 8067

<b>ANGUSGS</b>	
Act BW	96
Adj WW/WWR	609 / 109
Adj YW	

CED	BW	WW	YW	SC	MILK	MARB	RE	\$W	\$B								
6	2.2	69	119	0.53	30	0.2	0.57	73	104								
CED	BW	WW	YW	DMI	YH	SC	DOC	HP	CEM	MLK	MW	MH	CW	MARB	RE	FAT	TEND
88	92	11	21	91	5	17	22	17	91	37	19	17	26	81	67	88	21

- Dam Record: BWR 5@103, WWR 5@112
- ADG: 3.67
- Pathfinder cow 5@112. Stout bull.

**100** **Simonson MCash 2739** ★★  
**BULL** REG: 19550770 DOB: 03/13/19 TAT: 2739

Barstow Cash  
**Msar Cash 2525**  
 Msar Blackcap 320  
 Msar High Noon 9463  
**Simonson Blackcap 5801**  
 Msar Blackcap 990

Sitz Dash 10277  
 Barstow Queen W16  
 A A R High Five 8563  
 MSAR Blackcap 720  
 A A R High Five 8563  
 Msar Pride 103  
 Connealy Industry 5634  
 Msar Blackcap 690

<b>ANGUSGS</b>	
Act BW	86
Adj WW/WWR	614 / 110
Adj YW	

CED	BW	WW	YW	SC	MILK	MARB	RE	\$W	\$B								
7	0.9	64	108	1.39	23	0.58	0.42	63	118								
CED	BW	WW	YW	DMI	YH	SC	DOC	HP	CEM	MLK	MW	MH	CW	MARB	RE	FAT	TEND
81	89	37	66	97	25	36	79	48	66	82	8	18	49	72	68	37	33

- Dam Record: BWR 2@103, WWR 2@105
- ADG: 2.87
- Soggy bull that weaned at 110.

**101** **Simonson MCash 2359** ★★  
**BULL** REG: 19550752 DOB: 02/22/19 TAT: 2359

Barstow Cash  
**Msar Cash 2525**  
 Msar Blackcap 320  
 S Chisum 6175  
**Msar Pride 214**  
 Msar Pride 814

Sitz Dash 10277  
 Barstow Queen W16  
 A A R High Five 8563  
 MSAR Blackcap 720  
 S Alliance 3313  
 S Gloria 464  
 Connealy Industry 5634  
 Msar Pride 0614

<b>ANGUSGS</b>	
Act BW	87
Adj WW/WWR	568 / 102
Adj YW	

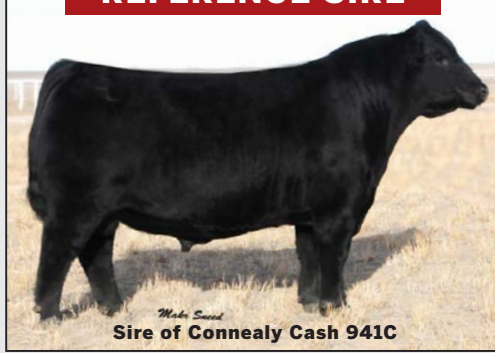
CED	BW	WW	YW	SC	MILK	MARB	RE	\$W	\$B								
8	1.5	73	113	0.22	20	0.33	0.56	76	114								
CED	BW	WW	YW	DMI	YH	SC	DOC	HP	CEM	MLK	MW	MH	CW	MARB	RE	FAT	TEND
47	95	15	37	61	14	71	23	42	29	87	82	72	41	88	62	70	21

- Dam Record: BWR 6@100, WWR 6@100
- ADG: 3.20



Carrol & Peggy Coffman

**REFERENCE SIRE**



**RS Connealy Cash 941C**  
BULL REG: 18229201 DOB: 01/24/2015 TAT: 5504

| Sitz Dash 10277  
**Barstow Cash**  
| Barstow Queen W16  
  
| Connealy Right Answer 746  
**Black Ceena of Conanga 941C**  
| Black Ceana of Conanga 160

Sitz Upward 307R  
Sitz Everelda Entense 2665  
S A V Final Answer 0035  
RCA Queen R42  
S A V Final Answer 0035  
Happy Dell of Conanga 262  
S A F Focus of E R  
Black Cello of Conanga 4160

CED	BW	WW	YW	SC	MILK	MARB	RE	\$W	\$B
11	-0.3	53	105	1.04	27	0.28	0.48	59	109

**102 Simonson CCash 1389** ★★  
BULL REG: 19605960 DOB: 02/01/19 TAT: 1389

Barstow Cash  
**Connealy Cash 941C**  
Black Ceena of Conanga 941C  
  
Connealy Front Page 0228  
**Msar Pride 014**  
Msar Pride 081

Sitz Dash 10277  
Barstow Queen W16  
Connealy Right Answer 746  
Black Ceana of Conanga 160  
Connealy Forefront  
Ebony Lit of Conanga 840  
M S A R Fame 268  
Minerts Pride 381

<b>Act BW</b>	87
<b>Adj WW/WWR</b>	549 / 99
<b>Adj YW</b>	1095

CED	BW	WW	YW	SC	MILK	MARB	RE	\$W	\$B
8	0.2	47	85	25	0.22	0.33	47	99	

- Dam Record: BWR 4@103, WWR 4@98
- ADG: 3.33
- Thick bull with a pathfinder granddam.



**104 Simonson CCash 1219** ★★★  
BULL REG: 19548950 DOB: 01/29/19 TAT: 1219

Barstow Cash  
**Connealy Cash 941C**  
Black Ceena of Conanga 941C  
  
Sitz Top Seed 539X  
**Msar Pride 542**  
Msar Pride 338

Sitz Dash 10277  
Barstow Queen W16  
Connealy Right Answer 746  
Black Ceana of Conanga 160  
Sitz Upward 307R  
Sitz Eisa Evergreen 12S  
S A V Pioneer 7301  
Msar Pride 029

<b>Act BW</b>	76
<b>Adj WW/WWR</b>	602 / 108
<b>Adj YW</b>	1148

CED	BW	WW	YW	SC	MILK	MARB	RE	\$W	\$B
11	-1.4	64	115	1.16	29	0.34	0.5	74	124

- Dam Record: BWR 3@86, WWR 3@98
- ADG: 3.33
- Heifer bull

**103 Simonson CCash 1299** ★★★  
BULL REG: 19548948 DOB: 01/31/19 TAT: 1299

Barstow Cash  
**Connealy Cash 941C**  
Black Ceena of Conanga 941C  
  
Connealy Answer 71  
**Msar Lady Grace 239**  
Msar Lady Grace 016

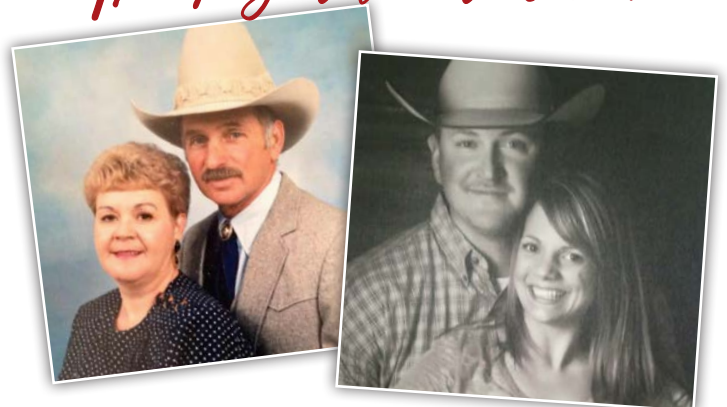
Sitz Dash 10277  
Barstow Queen W16  
Connealy Right Answer 746  
Black Ceana of Conanga 160  
S A V Final Answer 0035  
Euro Reeka of Conanga 3539  
Connealy Industry 5634  
Msar Lady Grace 416

<b>Act BW</b>	74
<b>Adj WW/WWR</b>	612 / 110
<b>Adj YW</b>	1132

CED	BW	WW	YW	SC	MILK	MARB	RE	\$W	\$B
14	-1.8	56	99	0.81	27	0.43	0.44	65	115

- Dam Record: BWR 5@94, WWR 5@103
- ADG: 3.17
- Thick heifer bull

*Thank you to our crew!*



**Dick and Loretta Marshall  
Zach and Makala Whitenack**





**105 Simonson CCash 4089** ★★★  
**BULL REG: 19550264 DOB: 01/18/19 TAT: 4089**

Barstow Cash  
**Connealy Cash 941C**  
 Black Ceena of Conanga 941C

A A R High Five 8563  
**Msar Edella 142**  
 Msar Edella 767

Sitz Dash 10277  
 Barstow Queen W16  
 Connealy Right Answer 746  
 Black Ceana of Conanga 160  
 A A R Image Maker 6538  
 A A R Donna 6514  
 Connealy Front Page 0228  
 Msar Edella 367

Act BW
83
Adj WW/WWR
655 / 118
Adj YW
1217

CED	BW	WW	YW	SC	MILK	MARB	RE	\$W	\$B
9	-0.1	66	113	0.88	25	0.24	0.34	71	110

- Dam Record: BWR 4@101, WWR 4@102
- ADG: 3.42
- Stout bull with lighter birthweight



**108 Simonson CCash 2339** ★★★  
**BULL REG: 19550265 DOB: 02/22/19 TAT: 2339**

Barstow Cash  
**Connealy Cash 941C**  
 Black Ceana of Conanga 941C

A A R High Five 8563  
**Msar Pride 379**  
 Msar Pride 579

Sitz Dash 10277  
 Barstow Queen W16  
 Connealy Right Answer 746  
 Black Ceana of Conanga 160  
 A A R Image Maker 6538  
 A A R Donna 6514  
 Leachman Right Time  
 Minerts Pride 679

Act BW
82
Adj WW/WWR
640 / 115
Adj YW

CED	BW	WW	YW	SC	MILK	MARB	RE	\$W	\$B
10	-0.4	59	103	0.69	27	0.4	0.14	66	103

- Dam Record: BWR 4@95, WWR 4@104
- ADG: 3.51
- Heifer bull with weaning at 115.

**106 Simonson CCash 5029** ★★★  
**BULL REG: 19548949 DOB: 03/06/19 TAT: 5029**

Barstow Cash  
**Connealy Cash 941C**  
 Black Ceana of Conanga 941C

HF Done Right 32Y  
**Msar Van Pride 484**  
 Msar Van Pride 284

Sitz Dash 10277  
 Barstow Queen W16  
 Connealy Right Answer 746  
 Black Ceana of Conanga 160  
 HF Done Right 125R  
 HF Tibbie 126W  
 S A V Final Answer 0035  
 Msar Van Pride 884

Act BW
76
Adj WW/WWR
595 / 107
Adj YW

CED	BW	WW	YW	SC	MILK	MARB	RE	\$W	\$B
12	-1.2	60	106		27	0.25	0.3	65	110

- Dam Record: BWR 4@91, WWR 4@102
- ADG: 3.15
- Smooth made heifer bull

**109 TM Minert Rising son 1509** ★★  
**BULL REG: 19605959 DOB: 02/03/19 TAT: 1509**

HF Simulator 62Z  
**HF Rising Son 13B**  
 HF Evening Tinge 9L

Connealy Industry 5634  
**Msar Queen 523**  
 Msar Queen 023

MCATL Pure Product 903-55  
 HF Evening Tinge 6X  
 Greens Premium 7578  
 HF Evening Tinge 14F  
 Connealy Freightliner  
 Eilera of Conanga 2583  
 A A R High Five 8563  
 Msar Queen 377

Act BW
84
Adj WW/WWR
505 / 91
Adj YW
1116

CED	BW	WW	YW	SC	MILK	MARB	RE	\$W	\$B
6	0.5	50	78	0.29	11	0.29	0.36	37	88

- Dam Record: BWR 3@104, WWR 3@96
- ADG: 3.73
- Deep, thick bull.

**107 Simonson CCash 2349** ★  
**BULL REG: 19549074 DOB: 02/22/19 TAT: 2349**

Barstow Cash  
**Connealy Cash 941C**  
 Black Ceana of Conanga 941C

Sitz Top Seed 539X  
**Msar Queen Eva 4319**  
 Msar Queen Eva 057

Sitz Dash 10277  
 Barstow Queen W16  
 Connealy Right Answer 746  
 Black Ceana of Conanga 160  
 Sitz Upward 307R  
 Sitz Eisa Evergreen 12S  
 Connealy Front Page 0228  
 Msar Queen Eva 6557

Act BW
101
Adj WW/WWR
580 / 104
Adj YW

CED	BW	WW	YW	SC	MILK	MARB	RE	\$W	\$B
3	3.1	57	111	0.75	28	0.27	0.36	53	121

- Dam Record: BWR 3@103, WWR 3@102
- ADG: 2.83
- Longer and bigger framed Connealy Cash son.

**110 TM Minert MCash 5429** ★  
**BULL REG: 19622139 DOB: 03/26/19 TAT: 5429**

Barstow Cash  
**Msar Cash 2525**  
 Msar Blackcap 320

Connealy Onstar 3213  
**Msar G D Blackcap 0918**  
 Msar G D Blackcap 537

Sitz Dash 10277  
 Barstow Queen W16  
 A A R High Five 8563  
 MSAR Blackcap 720  
 C A Future Direction 5321  
 Runella of Conanga 775  
 Connealy Front Page 0228  
 MSAR G D Blackcap 2851

Act BW
86
Adj WW/WWR
602 / 100
Adj YW

CED	BW	WW	YW	SC	MILK	MARB	RE	\$W	\$B
10	0.3	55	103		25			53	

- Dam Record: BWR 1@100, WWR 1@100
- ADG: 3.14
- Younger, deep ribbed bull.



# Selling Six-Year Old Well Broke Ranch Gelding

## TONKA

**AQHA REG: 5597925 DOB: 03/07/14 SORREL GELDING**

| CD Olena  
**CD Wooden Heart**  
 | Gay Wooden Heart  
 | Thats Begger Jack  
**Thatsa Nifty Diamond**  
 | Nifty Diamond Beggar

| Doc O Lena  
 CD Chica San Badger  
 Doctor Wood  
 Patricia Bar King  
 Jose Siervo  
 Sweetie Toots  
 Nifty Pal 119  
 Lawtonka Baby

**Consigned by Mike & Peggy Coffman 308-533-2294**

*Mike and Peggy have been selling a horse in our sale for nearly 20 years!*

## AVERAGE EPDS FOR CURRENT ANGUS SIRES

	CED	BW	WW	YW	RADG	DMI	YH	SC	DOC
<b>PRODUCTION</b>	6	1.2	5.4	96	0.23	0.73	0.5	0.76	15

	HP	CEM	MILK	MW	MH	\$EN
<b>MATERNAL</b>	10.7	9	25	46	0.3	-11.00

	CW	MARB	RE	FAT
<b>CARCASS</b>	38	0.50	0.50	0.012

	\$M	\$W	\$F	\$G	\$B
<b>\$VALUES</b>	52	54	82	44	126



The challenges cattle producers have faced this past year with a high number of open females have created the question of how much can the industry chase carcass.

The goal for Minert/Simonson Angus is to stay in real-time and then chase the numbers. We have always focused on raising cattle with volume, thickness, structure, disposition and udder quality as our main priority.

**First calf heifers approximately a week from calving pictured below.**



# MINERT/SIMONSON STOP ON 2019 NEBRASKA ANGUS TOUR

*Thank you!*

to Nebraska Angus Secretary, Margo Lehn, and the rest of the tour stops for making the 2019 Tour successful!

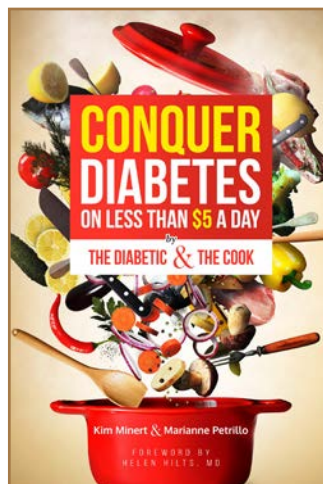
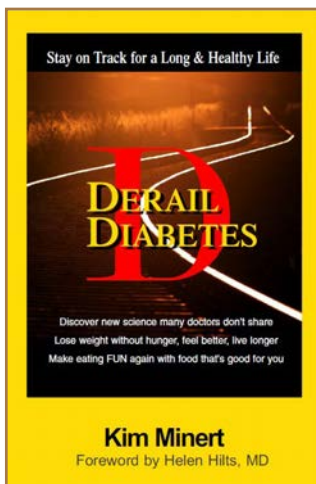


*A Blast from the Past!*

**CLEANING OUT THE TANK!**

**GOLD NUGGET 766 / #10988351 / 2/27/1987**

*Proven Heifer Bull / \$5/Straw or Volume Discount*



**Congrats Makala Whitenack on your new black powder state record with a score of 186!**



DeRail diabetes is a book for diabetics by diabetics. Kim Minert and Dr Helen Hilts are in the trenches with you. You can stay on track for a long and healthy life, and all for under five dollars a day. Order a copy on Amazon, [deraildiabetes.com](http://deraildiabetes.com), or contact Kim Minert at 602-527-2341.

SATURDAY, FEBRUARY 15, 2020 – 1:00 PM



MINERT-SIMONSON ANGUS  
83450 Hawley Flats Ave  
Dunning NE 68833



**FEBRUARY 15, 2020**

1:00 PM / At the Ranch / Dunning, Nebraska

*Selling 110 Yearling Angus Bulls*

