



MINERT
Angus
SIMONSON

ANNUAL BULL SALE
FEBRUARY 20, 2021

1:00 PM / AT THE RANCH / DUNNING, NEBRASKA

Real Time Angus



JW, Cindy, Jaylee, and Shaina Simonson



Anthony, Andrea, Kim, Carrol, Tim, Alexa and Sam
(not pictured Alexander)



Wes, Kelly, Hailey, and Landon Minert

Dear Cattlemen,

Welcome to our annual bull sale on February 20, 2021. We thank you for your continued support in our program and look forward to seeing you on sale day. We encourage you to view the 2021 offering prior to the sale to allow time to evaluate the heifer mates and cow/calf pairs as well.

Our program is based on the Sandhills grass with no creep supplement. We run our cows on after growth meadows after weaning with supplement of 25% cake until they calve. Prairie hay and cake are then fed until breeding time. The feed wagon is only used 25 days during the breeding season. The average daily gain test began the day the calves were weaned and weighed (October 8, 2020). The bulls were then weighed the first week in January (January 7, 2021).

Our bull development program and excellent disposition traits continue to be one of the highlights of our program. The bulls are feed on a 25 acre meadow with rations that consist of soy hulls, 12% DDGS, mineral supplements and ground prairie hay.

Our commitment continues to maintain focus on breeding cattle that have the same balance of structure and performance and will perform strong in your breeding program. Buy with confidence from a program that has been a leader within the breed for over fifty years and will continue to be here to serve you in the future. We can always assist those who are unable to attend the sale. Sight, unseen purchases come with a 100% satisfaction guarantee.

We are thankful for our customers, friends, family and neighbors who make sale day happen. Please call or stop by anytime and join us for lunch and pie on sale day!

JW and Cindy Simonson



**JW & Cindy Simonson
Carrol, Tim & Wes Minert**

**83450 Hawley Flats Ave
Dunning, NE 68833**

**Home (308) 538-2548
JW Cell (308) 880-0079**

When analyzing calving ease, take the combination of actual individual birth weight, dam's birth ratio, the BW EPD, and the CED number. The higher the CED number the greater the calving ease.

CALVING EASE STARS



Bull is recommended Highly for use on heifers to sire light birth weight calves.



Bull is designated to work on heifers that are larger framed with more management.



Bull is recommended Highly for use on cows.

Annual Bull Sale

SATURDAY - 1:00 PM

FEBRUARY 20, 2021

AT THE RANCH - DUNNING, NE



SALE LOCATION

Minert/Simonson Angus Ranch

42099 Roseberry Road / Dunning, NE 68833

Located three miles east of Dunning, NE on Highway 91.

Turn at the Minert/Simonson sign and go three miles Southeast.

SALE DAY PHONES

Sale Day Phone.....308-538-2676

JW Simonson.....308-880-0079

AUCTIONEER

Joe Goggins.....406-373-6844

REPRESENTATIVES

American Angus Association.....Levi Landers, 308-730-1396

Tri-State Livestock News.....Drew Feller, 402-841-4215

Western Livestock Journal.....Jim Gies, 970-454-3836

Western Ag Reporter.....Alan Sears, 970-396-7521

Buyers unable to attend the sale may send bids to any of the above representatives or MINERT/SIMONSON ANGUS. Satisfaction is GUARANTEED on all bids.

LUNCH A complimentary lunch will be served on sale day. Join us for pie after the sale as well!

CATALOG DESIGN

Design Unbridled.....Hannah Shroyer, 402-841-4216

LODGING

Super 8.....Broken Bow & Ainsworth, 800-800-8000

Rodeway Inn.....Thedford, 308-645-2284

Cobblestone Hotel & Suites.....Broken Bow, 308-767-2060

Halsey Frontier Inn.....308-533-2240

RETAINED INTEREST MSAR is retaining 1/3 interest in all bulls sold, unless otherwise stated in catalog or on the block. This does not restrict your use since you have full possession. Very few bulls will actually be collected and when it does occur we will work with the buyer.

Selling

**105 YEARLING ANGUS BULLS
1 WELL BROKE GELDING**

INSURANCE Mortality insurance (death or injury resulting in death) will be available through American Livestock Insurance.

NUTRITION The bulls are not creep fed! They are developed on the ranch on 25 acres with 100 percent of the roughage grass hay. Bulls have not been fed any corn. The complete ration includes soy hulls, 12% DDGS, supplement, molasses and ground hay.

Ed Sabaka.....308-379-7848

ULTRASOUND Ultrasound for back fat, marbling, and ribeye will be available sale day and on our website and Facebook page prior to the sale.

FERTILITY Bulls will be semen tested and scrotal measurements will be available sale day and on our website and Facebook page prior to the sale.

EPDS EPDs are now being updated weekly. The EPDs printed in this catalog are as of the week of 1/15/21.

GUARANTEE All bulls are guaranteed against breeding injury for the first breeding season. Breeding season is defined as the 90 day period following the first turnout of the bulls. Credit for the purchase amount less \$1,500 (buyer keeps salvage value) will be applied toward a replacement of an injured bull. Credit is for a replacement bull or credit in the 2022 sale.

VOLUME DISCOUNT A \$100 discount off third bull purchased and \$100 off for each additional bull.

FREE WINTERING & DELIVERY Bulls will have excellent care and will be delivered in early April 2021.

ONLINE BIDDING Online bidding is available through DVAuction.com. Please register on DV Auction at least 24 hours before the sale. A full time support team can also be reached at 402-474-5557.

Videos Available

MINERTSIMONSON.COM

DVAuction
Broadcasting Real-Time Auctions

Steamboat Sons



T K Steamboat D307 #18761484

Rito 707 of Ideal 3407 7075
S A V Renown 3439
 S A V Blackcap May 4136

S A V Net Worth 4200
T K Tesa W592
 T K Tesa R94

R R Rito 707
 Ideal 3407 of 1418 076
 S A V 8180 Traveler 004
 S A V May 2397
 S A V 8180 Traveler 004
 S A V May 2410
 Bon View New Design 878
 T K Tesa M508

CED	BW	WW	YW	SC	MILK	MARB	RE	SW	SB	SC
-7	4.3	88	152	1.18	25	0.13	0.77	78	129	219

Steamboats continue to be very consistent; they are full of muscle with great eye appeal. He definitely stamps them all with a long, stout hip and loads of rib and thickness. First daughters have outstanding udders and are made for the Sandhills.



LOT 1



DAM OF LOT 1

Simonson Steamboat 1940

1

REG: 19944976 DOB: 02/13/20 TAT: 1940

S A V Renown 3439
T K Steamboat D307
 T K Tesa W592

Leachman Right Time
SHAINA Edella 706
 MSAR Edella 506

Rito 707 of Ideal 3407 7075
 S A V Blackcap May 4136
 S A V Net Worth 4200
 T K Tesa R94
 N Bar Emulation EXT
 Leachman Erica 0025
 Connealy Front Page 0228
 Msar Edella 906

Act BW	97
Adj WW/WWR	664 / 100
Adj YW	1296

ANGUSGS

CED	BW	WW	YW	SC	MILK	MARB	RE	SW	SB	SC
-1	3.3	64	103	0.79	26	-0.15	0.39	66	82	178

- Dam Record: BWR 10@102, WWR 10@110
- ADG 3.89
- Long good topped Steamboat son out of a pathfinder Right Time dam.
- She is 14 years old and going strong.



2 **Simonson Steamboat 1990** ★
 REG: 19940708 DOB: 01/31/20 TAT: 1990

S A V Renown 3439
T K Steamboat D307
 T K Tesa W592

Rito 707 of Ideal 3407 7075
 S A V Blackcap May 4136
 S A V Net Worth 4200
 T K Tesa R94
 N Bar Emulation EXT
 Leachman Erica 0025
 Minerts Fortune 2000
 Simonson FOREVER 1371

Act BW	85
Adj WW/WWR	672 / 100
Adj YW	1304

ANGUSGS

CED	BW	WW	YW	SC	MILK	MARB	RE	\$W	\$B	\$C
-5	4.3	79	128	1.15	24	0.13	0.66	74	88	171

- Dam Record: BWR 11@98, WWR 11@106
- ADG 4.00
- Full brother to the Steamboat son that Todd Boettcher purchased in 2020 sale for \$15,000. Full brother to lot 3 & 4.
- Pathfinder Right Time dam.

3 **Simonson Steamboat 1930** ★
 REG: 19940711 DOB: 01/31/20 TAT: 1930

S A V Renown 3439
T K Steamboat D307
 T K Tesa W592

Rito 707 of Ideal 3407 7075
 S A V Blackcap May 4136
 S A V Net Worth 4200
 T K Tesa R94
 N Bar Emulation EXT
 Leachman Erica 0025
 Minerts Fortune 2000
 Simonson FOREVER 1371

Act BW	86
Adj WW/WWR	662 / 100
Adj YW	1291

ANGUSGS

CED	BW	WW	YW	SC	MILK	MARB	RE	\$W	\$B	\$C
-10	4.3	74	125	0.16	22	0.48	0.49	67	116	210

- Dam Record: BWR 11@98, WWR 11@106
- ADG 3.82



DAM OF LOT 2-4

Lowell, Jaylee and Simonson Forever 8051

4 **Simonson Steamboat 1950** ★
 REG: 19940710 DOB: 02/16/20 TAT: 1950

S A V Renown 3439
T K Steamboat D307
 T K Tesa W592

Rito 707 of Ideal 3407 7075
 S A V Blackcap May 4136
 S A V Net Worth 4200
 T K Tesa R94
 N Bar Emulation EXT
 Leachman Erica 0025
 Minerts Fortune 2000
 Simonson FOREVER 1371

Act BW	91
Adj WW/WWR	531 / 100
Adj YW	1219

ANGUSGS

CED	BW	WW	YW	SC	MILK	MARB	RE	\$W	\$B	\$C
1	3.6	78	131	0.74	32	0.17	0.53	86	105	198

- Dam Record: BWR 11@98, WWR 11@106
- ADG 4.09



5 **Simonson Steamboat 1120** ★
 REG: 19914395 DOB: 02/21/20 TAT: 1120

S A V Renown 3439
T K Steamboat D307
 T K Tesa W592

Rito 707 of Ideal 3407 7075
 S A V Blackcap May 4136
 S A V Net Worth 4200
 T K Tesa R94
 HF Tiger 5T
 HF Lucy 317Y
 Connealy Industry 5634
 Msar G D Blackcap 382

Act BW	78
Adj WW/WWR	720 / 118
Adj YW	1381

ANGUSGS

CED	BW	WW	YW	SC	MILK	MARB	RE	\$W	\$B	\$C
0	3.6	85	147	1.99	28	0.15	0.63	81	123	212

- Dam Record: BWR 2@98, WWR 2@112
- ADG 3.93
- Long stout bull with a weaning ratio of 118.



LOT 6

TM Minert Steamboat 1470 ★

6 REG: 19914329 DOB: 03/06/20 TAT: 1470

S A V Renown 3439
T K Steamboat D307
 T K Tesa W592

HF Rising Son 13B
MSar GD Blackcap 631
 Msar GD Blackcap 331

Rito 707 of Ideal 3407 7075
 S A V Blackcap May 4136
 S A V Net Worth 4200
 T K Tesa R94
 HF Simulator 62Z
 HF Evening Tinge 9L
 Sitz Top Seed 539X
 Msar GD Blackcap 131

Act BW	91
Adj WW/WWR	600 / 98
Adj YW	

ANGUSGS

CED	BW	WW	YW	SC	MILK	MARB	RE	\$W	\$B	SC
1	2.4	72	129	1.74	29	0.38	0.33	74	103	201

- Dam Record: BWR 3@106, WWR 3@95
- ADG 4.58



LOT 8

Simonson Steamboat 1800 ★

8 REG: 19914392 DOB: 03/30/20 TAT: 1800

S A V Renown 3439
T K Steamboat D307
 T K Tesa W592

S A V Resource 1441
Msar Pride 729
 Msar Pride 410

Rito 707 of Ideal 3407 7075
 S A V Blackcap May 4136
 S A V Net Worth 4200
 T K Tesa R94
 Rito 707 of Ideal 3407 7075
 S A V Blackcap May 4136
 HF Done Right 32Y
 Msar Pride 110

Act BW	87
Adj WW/WWR	734 / 120
Adj YW	

CED	BW	WW	YW	SC	MILK	MARB	RE	\$W	\$B	SC
-3	3.9	85	145	1.05	25	0.11	0.80	76	128	219

- Dam Record: BWR 2@104, WWR 2@116
- ADG 4.00



LOT 7

Simonson Steamboat 1290 ★

7 REG: 19914391 DOB: 02/27/20 TAT: 1290

S A V Renown 3439
T K Steamboat D307
 T K Tesa W592

Barstow Cash
Msar GD Blackcap 714
 Msar GD Blackcap 8745

Rito 707 of Ideal 3407 7075
 S A V Blackcap May 4136
 S A V Net Worth 4200
 T K Tesa R94
 Sitz Dash 10277
 Barstow Queen W16
 Connealy Industry 5634
 Msar GD Blackcap 196

Act BW	86
Adj WW/WWR	632 / 103
Adj YW	1246

ANGUSGS

CED	BW	WW	YW	SC	MILK	MARB	RE	\$W	\$B	SC
2	1.4	60	108	1.55	26	-0.03	0.69	63	95	162

- Dam Record: BWR 2@104, WWR 2@103
- ADG 3.80



LOT 9

Simonson Steamboat 1090 ★

9 REG: 19914393 DOB: 02/21/20 TAT: 1090

S A V Renown 3439
T K Steamboat D307
 T K Tesa W592

Sitz Top Seed 539X
Msar Blackcap 758
 Msar Blackcap 4330

Rito 707 of Ideal 3407 7075
 S A V Blackcap May 4136
 S A V Net Worth 4200
 T K Tesa R94
 Sitz Upward 307R
 Sitz Eisa Evergreen 12S
 Simonson Sheriff 3069
 Msar Blackcap 1060

Act BW	91
Adj WW/WWR	646 / 106
Adj YW	1432

ANGUSGS

CED	BW	WW	YW	SC	MILK	MARB	RE	\$W	\$B	SC
8	0.4	65	127	-0.02	26	0.42	0.59	65	142	223

- Dam Record: BWR 2@105, WWR 2@92
- ADG 4.87



LOT 10

Simonson Steamboat 1260 ★

10 REG: 19914404 DOB: 02/26/20 TAT: 1260

S A V Renown 3439
T K Steamboat D307
 T K Tesa W592

HF Who's That 7A
TM Msar Queen Eva 780
 Msar Queen Eva 1046

Rito 707 of Ideal 3407 7075
 S A V Blackcap May 4136
 S A V Net Worth 4200
 T K Tesa R94
 HF Tiger 5T
 HF Lucy 317Y
 TC Aberdeen 759
 Msar Queen Eva 961

Act BW	86
Adj WW/WWR	678 / 111
Adj YW	

ANGUSGS

CED	BW	WW	YW	SC	MILK	MARB	RE	\$W	\$B	\$C
-1	2.9	80	147	0.83	25	0.60	0.50	75	159	271

- Dam Record: BWR 2@101, WWR 2@110
- ADG 5.00
- Little bigger framed Steamboat.



LOT 12

Simonson Steamboat 1050 ★

12 REG: 19914332 DOB: 02/20/20 TAT: 1050

S A V Renown 3439
T K Steamboat D307
 T K Tesa W592

TC Aberdeen 759
Msar Lady Eston 1045
 MSAR Lady Eston 948

Rito 707 of Ideal 3407 7075
 S A V Blackcap May 4136
 S A V Net Worth 4200
 T K Tesa R94
 C R A Bextor 872 5205 608
 TC Blackbird 4034
 S A V Final Answer 0035
 Msar Lady Eston 248

Act BW	91
Adj WW/WWR	621 / 101
Adj YW	1402

ANGUSGS

CED	BW	WW	YW	SC	MILK	MARB	RE	\$W	\$B	\$C
-1	2.9	77	132	1.73	31	0.55	0.55	83	125	215

- Dam Record: BWR 7@106, WWR 7@103
- ADG 5.33
- Long bigger frame bull out of a pathfinder cow.



LOT 11

TM Minert Steamboat 1590

11 REG: 19914334 DOB: 02/16/20 TAT: 1590

S A V Renown 3439
T K Steamboat D307
 T K Tesa W592

BSF Hot Lotto 1401
TM Msar Queen Eva 799
 Msar Queen Eva 199

Rito 707 of Ideal 3407 7075
 S A V Blackcap May 4136
 S A V Net Worth 4200
 T K Tesa R94
 Barstow Cash
 BSF Princess EL Cap W2
 S A V Final Answer 0035
 Msar Queen Eva 988

Act BW	70
Adj WW/WWR	628 / 103
Adj YW	1263

ANGUSGS

CED	BW	WW	YW	SC	MILK	MARB	RE	\$W	\$B	\$C
-5	4.2	91	162	1.28	22	0.02	1.00	78	130	222

- Dam Record: BWR 2@93, WWR 2@106
- ADG 3.89



LOT 13

Simonson Steamboat 410 ★★

13 REG: 19914325 DOB: 02/05/20 TAT: 410

S A V Renown 3439
T K Steamboat D307
 T K Tesa W592

Msar Shaker 2307
Simonson Blackcap 2529
 Simonson Blackcap 0307

Rito 707 of Ideal 3407 7075
 S A V Blackcap May 4136
 S A V Net Worth 4200
 T K Tesa R94
 Connealy Freightliner
 Msar Pride 538
 S A V Final Answer 0035
 Simonson Blackcap 5720

Act BW	82
Adj WW/WWR	666 / 109
Adj YW	1279

ANGUSGS

CED	BW	WW	YW	SC	MILK	MARB	RE	\$W	\$B	\$C
4	2.1	72	120	1.26	23	0.50	0.55	75	109	201

- Dam Record: BWR 6@92, WWR 6@104
- ADG 3.56
- Smooth shoulder steamboat with weaning ratio of 109.
- Full brother was a 2020 sale favorite purchased by JH Minors.



14 **Simonson Steamboat 860** ★
 REG: 19914381 DOB: 02/16/20 TAT: 860

S A V Renown 3439
T K Steamboat D307
 T K Tesa W592

S A V Final Answer 0035
Msar Pride 327
 Msar Pride 127

Rito 707 of Ideal 3407 7075
 S A V Blackcap May 4136
 S A V Net Worth 4200
 T K Tesa R94
 Sitz Traveler 8180
 S A V Emulous 8145
 Sitz Upward 307R
 Msar Pride 521

Act BW	80
Adj WW/WWR	549 / 90
Adj YW	1192

ANGUSGS

CED	BW	WW	YW	SC	MILK	MARB	RE	\$W	\$B	SC
4	1.9	73	131	0.51	25	0.24	0.57	73	119	213

- Dam Record: BWR 6@94, WWR 6@94
- ADG 4.16

16 **Simonson Steamboat 960** ★
 REG: 19914387 DOB: 02/17/20 TAT: 960

S A V Renown 3439
T K Steamboat D307
 T K Tesa W592

A A R High Five 8563
Msar Blackcap 511
 Msar Blackcap 211

Rito 707 of Ideal 3407 7075
 S A V Blackcap May 4136
 S A V Net Worth 4200
 T K Tesa R94
 A A R Image Maker 6538
 A A R Donna 6514
 Sitz Top Seed 539X
 Msar Blackcap 7611

Act BW	87
Adj WW/WWR	629 / 103
Adj YW	1319

ANGUSGS

CED	BW	WW	YW	SC	MILK	MARB	RE	\$W	\$B	SC
-6	3.0	76	125	1.01	22	0.18	0.53	72	99	184

- Dam Record: BWR 4@101, WWR 4@102
- ADG 4.36



15 **Simonson Steamboat 190** ★★
 REG: 19914336 DOB: 01/25/20 TAT: 190

S A V Renown 3439
T K Steamboat D307
 T K Tesa W592

S A V Final Answer 0035
Simonson Forever 4701
 Simonson Forever 2540

Rito 707 of Ideal 3407 7075
 S A V Blackcap May 4136
 S A V Net Worth 4200
 T K Tesa R94
 Sitz Traveler 8180
 S A V Emulous 8145
 A A R High Five 8563
 Simonson Forever 0310

Act BW	79
Adj WW/WWR	666 / 109
Adj YW	1335

ANGUSGS

CED	BW	WW	YW	SC	MILK	MARB	RE	\$W	\$B	SC
6	0.3	70	123	1.19	27	0.28	0.58	75	102	184

- Dam Record: BWR 5@92, WWR 5@104
- ADG 4.31
- Out of pathfinder cow.

17 **Simonson Steamboat 2000** ★
 REG: 19914383 DOB: 02/24/20 TAT: 2000

S A V Renown 3439
T K Steamboat D307
 T K Tesa W592

Msar High Noon 9463
Msar Lady Eston 5433
 Msar Lady Eston 233

Rito 707 of Ideal 3407 7075
 S A V Blackcap May 4136
 S A V Net Worth 4200
 T K Tesa R94
 A A R High Five 8563
 Msar Pride 103
 S A V Final Answer 0035
 Msar Lady Eston 7633

Act BW	88
Adj WW/WWR	633 / 103
Adj YW	1257

ANGUSGS

CED	BW	WW	YW	SC	MILK	MARB	RE	\$W	\$B	SC
0	2.7	75	125		23	0.25	0.56	67	117	224

- Dam Record: BWR 3@99, WWR 3@104
- ADG 4.50



LOT 18

Simonson Steamboat 1220 ★

18 REG: 19914408 DOB: 02/25/20 TAT: 1220

S A V Renown 3439
T K Steamboat D307
 T K Tesa W592

Rito 707 of Ideal 3407 7075
 S A V Blackcap May 4136
 S A V Net Worth 4200
 T K Tesa R94
 Sitz Upward 307R
 Sitz Eisa Evergreen 12S
 A A R High Five 8563
 Msar Blackcap 211

Act BW	89
Adj WW/WWR	657 / 107
Adj YW	1361

ANGUSGS

CED	BW	WW	YW	SC	MILK	MARB	RE	\$W	\$B	SC
-4	4.4	89	149	1.86	20	0.20	0.39	78	107	207

- Dam Record: BWR 2@101, WWR 2@103
- ADG 4.60



LOT 20

Simonson Steamboat 960 ★

20 REG: 19914337 DOB: 02/19/20 TAT: 960

S A V Renown 3439
T K Steamboat D307
 T K Tesa W592

Rito 707 of Ideal 3407 7075
 S A V Blackcap May 4136
 S A V Net Worth 4200
 T K Tesa R94
 A A R High Five 8563
 Msar GD Blackcap 095
 Msar Sheriff
 Msar Pride 432

Act BW	88
Adj WW/WWR	695 / 114
Adj YW	1436

ANGUSGS

CED	BW	WW	YW	SC	MILK	MARB	RE	\$W	\$B	SC
1	3.3	70	117	0.36	26	0.24	0.49	70	108	196

- Dam Record: BWR 3@102, WWR 3@104
- ADG 4.51



LOT 19

Simonson Steamboat 1560 ★★

19 REG: 19914399 DOB: 03/09/20 TAT: 1560

S A V Renown 3439
T K Steamboat D307
 T K Tesa W592

Rito 707 of Ideal 3407 7075
 S A V Blackcap May 4136
 S A V Net Worth 4200
 T K Tesa R94
 A A R High Five 8563
 Msar GD Blackcap 095
 Sitz Alliance 476P
 Msar Lady Eston 404

Act BW	78
Adj WW/WWR	625 / 102
Adj YW	

ANGUSGS

CED	BW	WW	YW	SC	MILK	MARB	RE	\$W	\$B	SC
8	-0.8	49	85	-0.05	33	0.18	0.15	65	75	156

- Dam Record: BWR 3@95, WWR 3@103
- ADG 3.49



LOT 21

Simonson Steamboat 1480 ★★

21 REG: 19914330 DOB: 03/06/20 TAT: 1480

S A V Renown 3439
T K Steamboat D307
 T K Tesa W592

Rito 707 of Ideal 3407 7075
 S A V Blackcap May 4136
 S A V Net Worth 4200
 T K Tesa R94
 HF Simulator 62Z
 HF Evening Tinge 9L
 Msar Final Answer 2019
 Simonson Edella 0327

Act BW	78
Adj WW/WWR	693 / 113
Adj YW	

ANGUSGS

CED	BW	WW	YW	SC	MILK	MARB	RE	\$W	\$B	SC
3	2.0	79	137	0.30	25	0.44	0.65	77	126	221

- Dam Record: BWR 3@90, WWR 3@104
- ADG 4.02



LOT 22

Simonson Steamboat 300 ★

22

REG: 19914375 DOB: 01/30/20 TAT: 300

S A V Renown 3439
T K Steamboat D307
T K Tesa W592

Rito 707 of Ideal 3407 7075
S A V Blackcap May 4136
S A V Net Worth 4200
T K Tesa R94
HF Tiger 5T
HF Lucy 317Y
A A R High Five 8563
Msar Blackcap 6551

Act BW	93
Adj WW/WWR	607 / 99
Adj YW	1327

HF Who's That 7A
Simonson Blackcap 7023
Msar Blackcap 223

ANGUSGS

CED	BW	WW	YW	SC	MILK	MARB	RE	\$W	\$B	\$C
0	2.9	74	142	0.47	27	0.26	0.78	70	155	247

- Dam Record: BWR 2@101, WWR 2@108
- ADG 4.60



LOT 24

Simonson Steamboat 1340

24

REG: 19914377 DOB: 03/02/20 TAT: 1340

S A V Renown 3439
T K Steamboat D307
T K Tesa W592

Rito 707 of Ideal 3407 7075
S A V Blackcap May 4136
S A V Net Worth 4200
T K Tesa R94
Connealy Earnan 076E
EA Blackclass 8914
A A R High Five 8563
Msar GD Blackcap 992

Act BW	82
Adj WW/WWR	608 / 99
Adj YW	

Ellingson Roughrider 4202
Simonson GD Blackcap 7054
Msar GD Blackcap 1050

ANGUSGS

CED	BW	WW	YW	SC	MILK	MARB	RE	\$W	\$B	\$C
-2	2.5	57	101	0.56	23	0.01	0.41	51	104	187

- Dam Record: BWR 2@105, WWR 2@96
- ADG 3.87



LOT 23

Simonson Steamboat 1710 ★

23

REG: 19914376 DOB: 03/23/20 TAT: 1710

S A V Renown 3439
T K Steamboat D307
T K Tesa W592

Rito 707 of Ideal 3407 7075
S A V Blackcap May 4136
S A V Net Worth 4200
T K Tesa R94
Connealy Earnan 076E
EA Blackclass 8914
S Elevate 9165
Msar Edella 651

Act BW	85
Adj WW/WWR	715 / 117
Adj YW	

Ellingson Roughrider 4202
Simonson Edella 7035
Msar Edella 2111

ANGUSGS

CED	BW	WW	YW	SC	MILK	MARB	RE	\$W	\$B	\$C
-2	2.4	71	124	0.93	31	0.37	0.33	75	124	204

- Dam Record: BWR 2@95, WWR 2@95
- ADG 4.00



LOT 25

Simonson Steamboat 1650 ★

25

REG: 19914394 DOB: 03/16/20 TAT: 1650

S A V Renown 3439
T K Steamboat D307
T K Tesa W592

Rito 707 of Ideal 3407 7075
S A V Blackcap May 4136
S A V Net Worth 4200
T K Tesa R94
HF Tiger 5T
HF Lucy 317Y
S A V Pioneer 7301
Msar Pride 912

Act BW	84
Adj WW/WWR	713 / 117
Adj YW	

HF Who's That 7A
Msar Pride 7704
Msar Pride 412

CED	BW	WW	YW	SC	MILK	MARB	RE	\$W	\$B	\$C
-1	3.4	85	146	1.34	26	0.08	0.68	78	131	224

- Dam Record: BWR 2@100, WWR 2@112
- ADG 4.71



LOT 26



LOT 27

26 **TM Minert Steamboat 930** ★★
 REG: 19914378 DOB: 02/17/20 TAT: 930

S A V Renown 3439	Rito 707 of Ideal 3407 7075	Act BW
T K Steamboat D307	S A V Blackcap May 4136	84
T K Tesa W592	S A V Net Worth 4200	Adj WW/WWR
	T K Tesa R94	588 / 96
	HF Tiger 5T	Adj YW
HF Who's That 7A	HF Lucy 317Y	1255
MSAR Pride 615	Sitz Alliance 476P	
Msar Pride 870	Msar Pride 6520	

ANGUSGS

CED	BW	WW	YW	SC	MILK	MARB	RE	\$W	\$B	\$C
4	1.7	57	102	1.15	33	0.34	0.41	69	102	196

- Dam Record: BWR 2@97, WWR 2@103
- ADG 4.29

27 **Simonson Steamboat 970** ★
 REG: 19914396 DOB: 02/18/20 TAT: 970

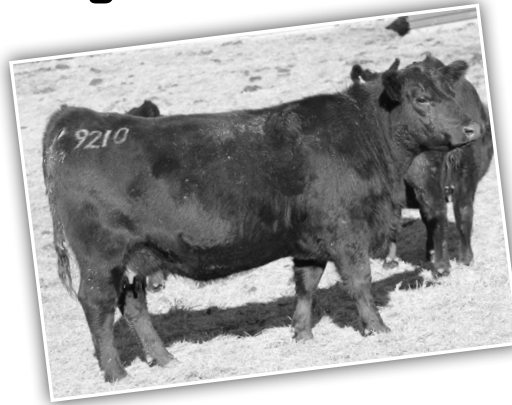
S A V Renown 3439	Rito 707 of Ideal 3407 7075	Act BW
T K Steamboat D307	S A V Blackcap May 4136	85
T K Tesa W592	S A V Net Worth 4200	Adj WW/WWR
	T K Tesa R94	668 / 109
	Basin Payweight 006S	Adj YW
Basin Payweight 1682	21AR O Lass 7017	1215
Msar GD Blackcap 7726	Connealy Industry 5634	
Msar GD Blackcap 133	Msar G D Blackcap 382	

ANGUSGS

CED	BW	WW	YW	SC	MILK	MARB	RE	\$W	\$B	\$C
-6	3.1	70	109	0.25	20	0.34	0.72	65	112	209

- Dam Record: BWR 2@107, WWR 2@107
- ADG 4.20

Steamboat Daughters



Coalition Sons



U-2 Coalition 206C #18626847

Connealy Consensus 7229	Connealy Consensus
HF Syndicate 213Z	Blue Lilly of Conanga 16
HF Miss Blackcap 27R	TC Freedom 104
	HF Miss Blackcap 50N
Young Dale Xclusive 25X	Young Dale Knock Out 134U
U2 Erelite 109	Young Dale Pollyanna 60T
U-2 Erelite 1X	S A V Final Answer 0035
	U-2 Erelite 8109U

CED	BW	WW	YW	SC	MILK	MARB	RE	\$W	\$B	\$C
7	0.9	60	116	0.79	17	0.44	0.55	49	136	229

The Coalition cattle have a nice feminine frontend, long big hip, plenty of rib, and walkout square.



LOT 28

28 **Simonson Coalition 220** ★★
 REG: 19923895 DOB: 01/26/20 TAT: 220

HF Syndicate 213Z U-2 Coalition 206C U2 Erelite 109Z	Connealy Consensus 7229 HF Miss Blackcap 27R Young Dale Xclusive 25X U-2 Erelite 1X HF Kodiak 5R HF Echo 84R Connealy Industry 5634 M S A R Bluebird 1212	Act BW 81 Adj WW/WWR 599 / 98 Adj YW 1313
---	--	---

HF Tiger 5T
Msar Bluebird 508
Msar Bluebird 808

CED	BW	WW	YW	SC	MILK	MARB	RE	\$W	\$B	\$C
8	0.4	48	90	0.88	23	0.32	0.78	49	122	218

- Dam Record: BWR 4@98, WWR 4@99
- AGD 4.53



LOT 30

29 **Simonson Coalition 790** ★
 REG: 19923923 DOB: 02/13/20 TAT: 790

HF Syndicate 213Z U-2 Coalition 206C U2 Erelite 109Z	Connealy Consensus 7229 HF Miss Blackcap 27R Young Dale Xclusive 25X U-2 Erelite 1X A A R Image Maker 6538 A A R Donna 6514 Leachman Right Time Msar Blackcap 233	Act BW 88 Adj WW/WWR 595 / 97 Adj YW 1227
---	--	---

A A R High Five 8563
Msar Blackcap 320
MSAR Blackcap 720

CED	BW	WW	YW	SC	MILK	MARB	RE	\$W	\$B	\$C
5	2.1	58	94	0.93	21	0.32	0.57	58	111	207

- Dam Record: BWR 6@107, WWR 6@104
- ADG 4.22
- Out of Pathfinder cow.

30 **Simonson Coalition 430**
 REG: 19923919 DOB: 02/05/20 TAT: 430

HF Syndicate 213Z U-2 Coalition 206C U2 Erelite 109Z	Connealy Consensus 7229 HF Miss Blackcap 27R Young Dale Xclusive 25X U-2 Erelite 1X Sitz Traveler 8180 S A V Emulous 8145 Leachman Right Time Msar Blackcap 233	Act BW 86 Adj WW/WWR 622 / 102 Adj YW 1331
---	--	--

S A V Final Answer 0035
Msar Blackcap 335
Msar Blackcap 835

CED	BW	WW	YW	SC	MILK	MARB	RE	\$W	\$B	\$C
7	0.4	70	123	0.96	20	0.25	0.38	71	108	207

- Dam Record: BWR 5@102, WWR 5@90
- ADG 4.22

videos available

The sale will be broadcast live online at www.dvauction.com and videos will be available on DV or our website two weeks prior to the sale.

MINERTSIMONSON.COM

DVAuction
Broadcasting Real-Time Auctions



LOT 31

Simonson Coalition 042 ★★

31 REG: 19923916 DOB: 02/07/20 TAT: 042

HF Syndicate 213Z
U-2 Coalition 206C
U2 Erelite 109Z

Sitz Top Seed 539X
Msar GD Blackcap 342
Msar GD Blackcap 982

Connealy Consensus 7229
HF Miss Blackcap 27R
Young Dale Xclusive 25X
U-2 Erelite 1X
Sitz Upward 307R
Sitz Eisa Evergreen 12S
Msar Sheriff
Msar G D Blackcap 382

Act BW	84
Adj WW/WWR	574 / 94
Adj YW	1316

ANGUSGS

CED	BW	WW	YW	SC	MILK	MARB	RE	\$W	\$B	\$C
0	1.3	59	109	1.05	26	0.44	0.33	62	120	221

- Dam Record: BWR 4@97, WWR 4@93
- ADG 4.82



LOT 33

Simonson Coalition 610 ★

33 REG: 19923894 DOB: 02/09/20 TAT: 610

HF Syndicate 213Z
U-2 Coalition 206C
U2 Erelite 109Z

Sitz Top Seed 539X
Msar Pride 528
Msar Pride 328

Connealy Consensus 7229
HF Miss Blackcap 27R
Young Dale Xclusive 25X
U-2 Erelite 1X
Sitz Upward 307R
Sitz Eisa Evergreen 12S
S A V Final Answer 0035
Msar Pride 127

Act BW	91
Adj WW/WWR	622 / 102
Adj YW	1384

ANGUSGS

CED	BW	WW	YW	SC	MILK	MARB	RE	\$W	\$B	\$C
-1	2.3	72	124	0.99	35	0.28	0.78	87	128	248

- Dam Record: BWR 3@107, WWR 3@101
- ADG 4.56



LOT 32

Simonson Coalition 630 ★

32 REG: 19923904 DOB: 02/10/20 TAT: 630

HF Syndicate 213Z
U-2 Coalition 206C
U2 Erelite 109Z

A A R High Five 8563
Msar Bluebird 427
MSAR Bluebird 6562

Connealy Consensus 7229
HF Miss Blackcap 27R
Young Dale Xclusive 25X
U-2 Erelite 1X
A A R Image Maker 6538
A A R Donna 6514
Connealy Front Page 0228
M S A R Bluebird 1212

Act BW	89
Adj WW/WWR	648 / 106
Adj YW	1291

ANGUSGS

CED	BW	WW	YW	SC	MILK	MARB	RE	\$W	\$B	\$C
5	0.5	63	103	0.69	28	0.02	0.31	71	98	181

- Dam Record: BWR 4@104, WWR 4@106
- ADG 4.11



LOT 34

Simonson Coalition 510 ★★

34 REG: 19923891 DOB: 02/08/20 TAT: 510

HF Syndicate 213Z
U-2 Coalition 206C
U2 Erelite 109Z

Sitz Top Seed 539X
Msar Pride 542
Msar Pride 338

Connealy Consensus 7229
HF Miss Blackcap 27R
Young Dale Xclusive 25X
U-2 Erelite 1X
Sitz Upward 307R
Sitz Eisa Evergreen 12S
S A V Pioneer 7301
Msar Pride 029

Act BW	87
Adj WW/WWR	628 / 103
Adj YW	1300

ANGUSGS

CED	BW	WW	YW	SC	MILK	MARB	RE	\$W	\$B	\$C
3	1.8	79	127	1.20	23	0.28	0.33	85	109	230

- Dam Record: BWR 4@90, WWR 4@100
- ADG 4.33



LOT 35

Simonson Coalition 940 ★

35 REG: 19923877 DOB: 02/17/20 TAT: 940

HF Syndicate 213Z
U-2 Coalition 206C
 U2 Erelite 109Z

S A V Pioneer 7301
MSAR Pride 638
 Msar Pride 538

Connealy Consensus 7229
 HF Miss Blackcap 27R
 Young Dale Xclusive 25X
 U-2 Erelite 1X
 S A V Final Answer 0035
 S A V Blackbird 5297
 Connealy Onstar 3213
 Msar Pride 338

Act BW	88
Adj WW/WWR	646 / 106
Adj YW	1315

ANGUSGS

CED	BW	WW	YW	SC	MILK	MARB	RE	\$W	\$B	\$C
1	2.8	68	127	1.10	29	0.23	0.53	68	122	204

- Dam Record: BWR 3@105, WWR 3@111
- ADG 4.20



LOT 37

Simonson Coalition 1960

37 REG: 19923872 DOB: 02/21/20 TAT: 1960

HF Syndicate 213Z
U-2 Coalition 206C
 U2 Erelite 109Z

Barstow Cash
Simonson Lady Eston 7028
 Msar Lady Eston 126

Connealy Consensus 7229
 HF Miss Blackcap 27R
 Young Dale Xclusive 25X
 U-2 Erelite 1X
 Sitz Dash 10277
 Barstow Queen W16
 S A V Final Answer 0035
 MSAR Lady Eston 526

Act BW	79
Adj WW/WWR	693 / 113
Adj YW	1410

ANGUSGS

CED	BW	WW	YW	SC	MILK	MARB	RE	\$W	\$B	\$C
13	-1.8	68	116	1.16	27	0.09	0.75	77	113	194

- Dam Record: BWR 1@95, WWR 1@113
- ADG 4.76
- Big spread of light birth weight and big on performance.



LOT 36

TM Minert Coalition 1020 ★★★

36 REG: 19923880 DOB: 02/19/20 TAT: 1020

HF Syndicate 213Z
U-2 Coalition 206C
 U2 Erelite 109Z

S A V Pioneer 7301
MSAR Forever Lady 665
 Msar Forever Lady 225

Connealy Consensus 7229
 HF Miss Blackcap 27R
 Young Dale Xclusive 25X
 U-2 Erelite 1X
 S A V Final Answer 0035
 S A V Blackbird 5297
 A A R High Five 8563
 Msar Forever Lady 925

Act BW	77
Adj WW/WWR	581 / 95
Adj YW	1232

ANGUSGS

CED	BW	WW	YW	SC	MILK	MARB	RE	\$W	\$B	\$C
9	-0.1	51	99	-0.03	31	0.17	0.62	62	102	201

- Dam Record: BWR 2@95, WWR 2@99
- ADG 4.13



**CONGRATULATIONS Dan and Shirley Carson on 'semi-retiring'
 Keep on picking Dan!**

Circle L Gus Sons



Circle L Gus #17993084

S Alliance 3313
S Chisum 6175
 S Gloria 464

HARB Pendleton 765 J H
Circle L PRIDE X097
 Circle L Pride 38T

Paws Up Alliance 9561
 Paws Up 9048 Emulation Ext
 S Eclipse 169
 S Gloria 209
 S A V Final Answer 0035
 H A R B Black Lady 375 J H
 G A R Retail Product
 Circle L Pride 550R

CED	BW	WW	YW	SC	MILK	MARB	RE	\$W	\$B	\$C
14	-1.9	62	104	0.62	18	0.19	0.74	67	152	292

The Gus cattle caught my eye at Denver. He is a heifer bull that consistently sires calves with a big top. Honestly, they don't look like heifer bulls but I used him again this year and the heifers are spitting them out. I also purchased a Gus son to clean up with from Circle L we call Stampede.



LOT 38

39 TM Minert Gus 540 ★

REG: 19925715 DOB: 02/08/20 TAT: 540

S Chisum 6175
Circle L Gus
 Circle L PRIDE X097

Connealy Industry 5634
Msar Queen Eva 098
 Msar Queen Eva 898

S Alliance 3313
 S Gloria 464
 HARB Pendleton 765 J H
 Circle L Pride 38T
 Connealy Freightliner
 Eilera of Conanga 2583
 Sitz Alliance 6595
 Msar Queen Eva 298

Act BW	91
Adj WW/WWR	600 / 98
Adj YW	1179

ANGUSGS

CED	BW	WW	YW	SC	MILK	MARB	RE	\$W	\$B	\$C
1	1.9	60	95	0.64	25	0.42	0.67	67	135	250

- Dam Record: BWR 7@104, WWR 8@99
- ADG 3.67
- Pathfinder dam.



LOT 40

38 Simonson Gus 420 ★★★

REG: 19925711 DOB: 02/05/20 TAT: 420

S Chisum 6175
Circle L Gus
 Circle L PRIDE X097

A A R High Five 8563
Msar Pride 379
 Msar Pride 579

S Alliance 3313
 S Gloria 464
 HARB Pendleton 765 J H
 Circle L Pride 38T
 A A R Image Maker 6538
 A A R Donna 6514
 Leachman Right Time
 Minerts Pride 679

Act BW	76
Adj WW/WWR	656 / 107
Adj YW	1285

ANGUSGS

CED	BW	WW	YW	SC	MILK	MARB	RE	\$W	\$B	\$C
12	-1.6	49	87	0.56	28	0.60	0.16	63	107	212

- Dam Record: BWR 5@94, WWR 5@105
- ADG 3.82
- Smooth correct made heifer bull.

CALVING EASE STARS

- ★★★ Bull is highly recommended for use on heifers to sire light birth weight calves.
- ★★ Bull is designated to work on heifers that are larger framed with more management.
- ★ Bull is highly recommended for use on cows.

40 Simonson Gus 2010 ★★

REG: 19925709 DOB: 02/16/20 TAT: 2010

S Chisum 6175
Circle L Gus
 Circle L PRIDE X097

HF Who's That 7A
MSAR Pride 617
 Msar Pride 8707

S Alliance 3313
 S Gloria 464
 HARB Pendleton 765 J H
 Circle L Pride 38T
 HF Tiger 5T
 HF Lucy 317Y
 Sitz Alliance 476P
 Msar Pride 6515

Act BW	80
Adj WW/WWR	606 / 99
Adj YW	1262

ANGUSGS

CED	BW	WW	YW	SC	MILK	MARB	RE	\$W	\$B	\$C
9	0.1	65	120	0.85	19	0.02	0.77	62	127	234

- Dam Record: BWR 3@101, WWR 3@103
- ADG 4.58



LOT 42



LOT 41

Simonson Gus 120 ★★★

42

REG: 19925706 DOB: 01/16/20 TAT: 120

S Chisum 6175
Circle L Gus
 Circle L PRIDE X097

S Alliance 3313
 S Gloria 464
 HARB Pendleton 765 J H
 Circle L Pride 38T
 HF Tiger 5T
 HF Lucy 317Y
 S A V Pioneer 7301
 Simonson Pride 0325

Act BW
75
Adj WW/WWR
698 / 114
Adj YW
1436

HF Who's That 7A
Simonson Pride 823
 Simonson Pride 4723

CED	BW	WW	YW	SC	MILK	MARB	RE	\$W	\$B	\$C
11	-1.0	69	119	1.26	25	0.16	0.68	74	146	262

- Dam Record: BWR 1@97, WWR 1@114
- ADG 4.73
- Interesting heifer bull that ratioed 114 at weaning.
- Deep ribbed with strong hindquarter. Nice package on his numbers.

Simonson Gus 140 ★★★

41

REG: 19925691 DOB: 01/21/20 TAT: 140

S Chisum 6175
Circle L Gus
 Circle L PRIDE X097

S Alliance 3313
 S Gloria 464
 HARB Pendleton 765 J H
 Circle L Pride 38T
 Rito 707 of Ideal 3407 7075
 S A V Blackcap May 4136
 S A V Final Answer 0035
 Msar June 117

Act BW
75
Adj WW/WWR
660 / 108
Adj YW
1199

S A V Renown 3439
Simonson JUNE 820
 Msar June 020

CED	BW	WW	YW	SC	MILK	MARB	RE	\$W	\$B	\$C
10	-0.5	69	116	1.43	18	0.19	0.58	66	129	249

- Dam Record: BWR 1@97, WWR 1@108
- ADG 3.67



Shaina graduated with her Masters in Occupational Therapy in May!



LOT 43



LOT 45

43 **Simonson Gus 160** ★★
 REG: 19925692 DOB: 01/22/20 TAT: 160

S Chisum 6175
Circle L Gus
 Circle L PRIDE X097

S Alliance 3313
 S Gloria 464
 HARB Pendleton 765 J H
 Circle L Pride 38T
 Rito 707 of Ideal 3407 7075
 S A V Blackcap May 4136
 S A V Final Answer 0035
 Msar Oakleaf 755

Act BW	80
Adj WW/WWR	668 / 109
Adj YW	1231

S A V Renown 3439
Simonson Oakleaf 855
 Msar Oakleaf 255

CED	BW	WW	YW	SC	MILK	MARB	RE	\$W	\$B	\$C
7	0.9	68	117	0.85	22	0.12	0.64	68	119	235

- Dam Record: BWR 1@102, WWR 1@109
- ADG 3.80

45 **Simonson Gus 100** ★★★
 REG: 19925686 DOB: 01/13/20 TAT: 100

S Chisum 6175
Circle L Gus
 Circle L PRIDE X097

S Alliance 3313
 S Gloria 464
 HARB Pendleton 765 J H
 Circle L Pride 38T
 S Summit 4604
 M Diamond Summit 466
Simonson Pride 899
 Simonson Pride 2544

Act BW	65
Adj WW/WWR	601 / 98
Adj YW	1238

CED	BW	WW	YW	SC	MILK	MARB	RE	\$W	\$B	\$C
14	-2.2	50	87		22			51		

- Dam Record: BWR 1@85, WWR 1@98
- ADG 4.33



LOT 44



LOT 46

44 **Simonson Gus 150** ★★
 REG: 19925699 DOB: 01/22/20 TAT: 150

S Chisum 6175
Circle L Gus
 Circle L PRIDE X097

S Alliance 3313
 S Gloria 464
 HARB Pendleton 765 J H
 Circle L Pride 38T
 Connealy Conquest
 Rubista of Conanga 2304
 Msar Shaker 2307
 Simonson Blackcap 5720

Act BW	81
Adj WW/WWR	723 / 118
Adj YW	1294

Connealy Expedition 2304
Jaylee Blackcap 889
 Simonson Blackcap 9209

CED	BW	WW	YW	SC	MILK	MARB	RE	\$W	\$B	\$C
8	0.5	75	126	1.15	23	0.38	0.60	77	141	262

- Dam Record: BWR 1@103, WWR 1@118
- ADG 3.82

46 **Simonson Gus 800** ★
 REG: 19925714 DOB: 02/13/20 TAT: 800

S Chisum 6175
Circle L Gus
 Circle L PRIDE X097

S Alliance 3313
 S Gloria 464
 HARB Pendleton 765 J H
 Circle L Pride 38T
 A A R Image Maker 6538
 A A R Donna 6514
 Brooks Rito 6577
 MSAR Lady Eston 7632

Act BW	92
Adj WW/WWR	634 / 104
Adj YW	1332

CED	BW	WW	YW	SC	MILK	MARB	RE	\$W	\$B	\$C
6	1.4	63	114	0.76	31	0.42	0.32	73	139	252

- Dam Record: BWR 7@104, WWR 7@106
- ADG 4.33
- Pathfinder dam.

ANGUSGS



LOT 47

Simonson Gus 180 ★★★

47 REG: 19925700 DOB: 01/23/20 TAT: 180

S Chisum 6175	S Alliance 3313	Act BW
Circle L Gus	S Gloria 464	74
Circle L PRIDE X097	HARB Pendleton 765 J H	Adj WW/WWR
	Circle L Pride 38T	628 / 103
	HF Tiger 5T	Adj YW
HF Who's That 7A	HF Lucy 317Y	1228
Simonson Lady Eston 8104	Connealy Industry 5634	
Simonson Lady Eston 3639	Simonson Lady Eston 4621	

CED	BW	WW	YW	SC	MILK	MARB	RE	\$W	\$B	\$C
11	-0.2	56	94	1.13	22	0.13	0.59	58	128	242

- Dam Record: BWR 1@95, WWR 1@103
- ADG 4.02



LOT 49

Simonson Gus 200

49 REG: 19925695 DOB: 01/25/20 TAT: 200

S Chisum 6175	S Alliance 3313	Act BW
Circle L Gus	S Gloria 464	78
Circle L PRIDE X097	HARB Pendleton 765 J H	Adj WW/WWR
	Circle L Pride 38T	676 / 110
	Connealy Conquest	Adj YW
Connealy Expedition 2304	Rubista of Conanga 2304	1364
Simonson June 8174	Leachman Right Time	
Msar June 157	M S A R June 857	

CED	BW	WW	YW	SC	MILK	MARB	RE	\$W	\$B	\$C
9	0.5	75	126	0.61	17	0.28	0.46	69	137	248

- Dam Record: BWR 1@100, WWR 1@110
- Heifer bull. WW ratio of 110.

TM Minert Gus 230 ★★★

48 REG: 19925705 DOB: 01/26/20 TAT: 230

S Chisum 6175	S Alliance 3313	Act BW
Circle L Gus	S Gloria 464	72
Circle L PRIDE X097	HARB Pendleton 765 J H	Adj WW/WWR
	Circle L Pride 38T	633 / 103
	Rito 707 of Ideal 3407 7075	Adj YW
S A V Resource 1441	S A V Blackcap May 4136	1217
T Msar Queen Eva 8173	A A R High Five 8563	
Msar Queen Eva 198	Msar Queen Eva 898	

CED	BW	WW	YW	SC	MILK	MARB	RE	\$W	\$B	\$C
12	-1.6	59	105	0.93	23	0.20	0.57	62	124	236

- Dam Record: BWR 1@93, WWR 1@103
- ADG 4.02
- Heifer bull. His back toe was peeled as calf.
- We trimmed it the first week in January.



Saluting long time customer and friend
Bill Watkins of Arnold (1939-2020)

Seedstock Sons



Kraye Seedstock DK 768 #18971873

S A V Registry 2831	Rito 707 of Ideal 3407 7075
S A V Seedstock 4838	S A V Madame Pride 0075
S A V Blackcap May 4136	S A V 8180 Traveler 004
	S A V May 2397
	Sitz Traveler 8180
S A V Final Answer 0035	S A V Emulous 8145
Queen DK 041	TC Rito 416
Queen FK 871	Queen FK 512

CED	BW	WW	YW	SC	MILK	MARB	RE	\$W	\$B	\$C
7	1.3	56	97	1.33	20	0.16	0.33	52	94	193

Kraye Seedstock progeny are good, complete cattle with great eye appeal and thickness. The cattle have great maternal features every cowman strives to find. First daughters are calving this year.



LOT 50



LOT 52

50 **Simonson KSeedstock 660** ★★
 REG: 19914398 DOB: 02/11/20 TAT: 660

S A V Seedstock 4838
Kraye Seedstock DK 768
 Queen DK 041

S A V 004 Predominant 4438
Msar Lady Eston 385
 Msar Lady Eston 785

S A V Registry 2831
 S A V Blackcap May 4136
 S A V Final Answer 0035
 Queen FK 871
 S A V 8180 Traveler 004
 S A V Emblynette 1182
 BT Right Time 24J
 Msar Lady Eston 4317

Act BW
84
Adj WW / WWR
612 / 100
Adj YW
1226

ANGUSGS

CED	BW	WW	YW	SC	MILK	MARB	RE	\$W	\$B	SC
7	1.5	57	93	1.83	28	0.24	0.27	63	83	167

- Dam Record: BWR 6@104, WWR 6@99
- ADG 4.00

52 **Simonson KSeedstock 1590** ★
 REG: 19914409 DOB: 03/12/20 TAT: 1590

S A V Seedstock 4838
Kraye Seedstock DK 768
 Queen DK 041

HF Done Right 32Y
Msar Pride 332
 Msar Pride 932

S A V Registry 2831
 S A V Blackcap May 4136
 S A V Final Answer 0035
 Queen FK 871
 HF Done Right 125R
 HF Tibbie 126W
 Msar Sheriff
 Msar Pride 432

Act BW
97
Adj WW / WWR
678 / 111
Adj YW

ANGUSGS

CED	BW	WW	YW	SC	MILK	MARB	RE	\$W	\$B	SC
2	3.4	66	105	2.12	14	0.18	0.24	53	87	181

- Dam Record: BWR 5@104, WWR 5@96
- ADG 3.33



LOT 51



LOT 53

51 **Simonson KSeedstock 1370** ★★★
 REG: 19914335 DOB: 03/03/20 TAT: 1370

S A V Seedstock 4838
Kraye Seedstock DK 768
 Queen DK 041

S A V Final Answer 0035
Msar Lady Eston 209
 MSAR Lady Eston 6528

S A V Registry 2831
 S A V Blackcap May 4136
 S A V Final Answer 0035
 Queen FK 871
 Sitz Traveler 8180
 S A V Emulous 8145
 Stepladder 004 Traveler 484
 Msar Lady Eston 245

Act BW
77
Adj WW / WWR
537 / 88
Adj YW

ANGUSGS

CED	BW	WW	YW	SC	MILK	MARB	RE	\$W	\$B	SC
14	-2.9	39	71	0.10	33	0.38	0.21	57	88	181

- Dam Record: BWR 6@100, WWR 6@101
- ADG 4.00

53 **Simonson Seedstock 1180** ★★★
 REG: 19914400 DOB: 02/24/20 TAT: 1180

S A V Seedstock 4838
Kraye Seedstock DK 768
 Queen DK 041

A A R High Five 8563
Msar Lady Eston 354
 MSAR Lady Eston 554

S A V Registry 2831
 S A V Blackcap May 4136
 S A V Final Answer 0035
 Queen FK 871
 A A R Image Maker 6538
 A A R Donna 6514
 Sitz Alliance 6595
 MSAR Lady Eston 154

Act BW
84
Adj WW / WWR
562 / 92
Adj YW

ANGUSGS

CED	BW	WW	YW	SC	MILK	MARB	RE	\$W	\$B	SC
4	1.9	53	91	0.20	15	0.21	0.36	41	99	199

- Dam Record: BWR 5@98, WWR 5@92
- ADG 3.24



LOT 54

Simonson KSeedstock 1210 ★★

54

REG: 19914388 DOB: 02/24/20 TAT: 1210

S A V Seedstock 4838
Kraye Seedstock DK 768
Queen DK 041

S A V Registry 2831
S A V Blackcap May 4136
S A V Final Answer 0035
Queen FK 871
Sitz Upward 307R
Sitz Elsa Evergreen 12S
S A V Final Answer 0035
Msar Pride 127

Act BW	74
Adj WW/WWR	613 / 100
Adj YW	1239

ANGUSGS

Sitz Top Seed 539X
Msar Pride 572
Msar Pride 327

CED	BW	WW	YW	SC	MILK	MARB	RE	\$W	\$B	\$C
12	-0.4	58	110	1.61	27	0.44	0.39	65	110	222

- Dam Record: BWR 4@88, WWR 4@102
- ADG 4.02



LOT 56

Simonson KSeedstock 1440 ★★

56

REG: 19914390 DOB: 03/06/20 TAT: 1440

S A V Seedstock 4838
Kraye Seedstock DK 768
Queen DK 041

S A V Registry 2831
S A V Blackcap May 4136
S A V Final Answer 0035
Queen FK 871
Connealy Product 568
Ebonista of Conanga 471
Sitz Alliance 476P
Msar Blackcap 465

Act BW	84
Adj WW/WWR	623 / 102
Adj YW	

ANGUSGS

Connealy Final Product
MSAR Blackcap 600
Msar Blackcap 690

CED	BW	WW	YW	SC	MILK	MARB	RE	\$W	\$B	\$C
3	1.8	70	127	0.72	23	0.06	0.65	65	111	188

- Dam Record: BWR 2@99, WWR 2@102
- ADG 4.58



LOT 55

Simonson KSeedstock 620 ★★

55

REG: 19914389 DOB: 02/09/20 TAT: 620

S A V Seedstock 4838
Kraye Seedstock DK 768
Queen DK 041

S A V Registry 2831
S A V Blackcap May 4136
S A V Final Answer 0035
Queen FK 871
HF Tiger 5T
HF Lucy 317Y
S A V Final Answer 0035
Msar GD Blackcap 982

Act BW	86
Adj WW/WWR	601 / 98
Adj YW	1273

ANGUSGS

HF Who's That 7A
Msar GD Blackcap 588
Msar GD Blackcap 1064

CED	BW	WW	YW	SC	MILK	MARB	RE	\$W	\$B	\$C
3	3.7	67	119	1.43	25	0.28	0.54	63	141	268

- Dam Record: BWR 4@97, WWR 4@99
- ADG 4.38



LOT 57

Simonson KSeedstock 390 ★★

57

REG: 19914327 DOB: 02/04/20 TAT: 390

S A V Seedstock 4838
Kraye Seedstock DK 768
Queen DK 041

S A V Registry 2831
S A V Blackcap May 4136
S A V Final Answer 0035
Queen FK 871
Sitz Dash 10277
Barstow Queen W14
Msar Shaker 2307
Simonson Forever 5709

Act BW	79
Adj WW/WWR	607 / 99
Adj YW	1295

ANGUSGS

Barstow Dash Y8
Simonson Forever 3630
Simonson Forever 1432

CED	BW	WW	YW	SC	MILK	MARB	RE	\$W	\$B	\$C
6	0.6	52	86	1.48	20	0.38	0.12	51	98	194

- Dam Record: BWR 6@92, WWR 6@100
- ADG 4.67



LOT 58

58 **Simonson KSeedstock 1550** ★
 REG: 19914328 DOB: 03/09/20 TAT: 1550

S A V Seedstock 4838 Kraye Seedstock DK 768 Queen DK 041	S A V Registry 2831 S A V Blackcap May 4136 S A V Final Answer 0035 Queen FK 871	Act BW 92 Adj WW/WWR 608 / 99 Adj YW
A A R High Five 8563 Simonson Pride 3645 Simonson Pride 1440	A A R Image Maker 6538 A A R Donna 6514 Msar Final Answer 2019 Simonson Pride 8067	ANGUSGS

CED	BW	WW	YW	SC	MILK	MARB	RE	\$W	\$B	\$C
3	3.0	62	109	1.34	29	0.11	0.18	62	86	173

- Dam Record: BWR 6@104, WWR 6@110
- ADG 4.11



LOT 60

60 **Simonson KSeedstock 570** ★
 REG: 19914382 DOB: 02/08/20 TAT: 570

S A V Seedstock 4838 Kraye Seedstock DK 768 Queen DK 041	S A V Registry 2831 S A V Blackcap May 4136 S A V Final Answer 0035 Queen FK 871	Act BW 90 Adj WW/WWR 576 / 94 Adj YW 1074
Simonson High Five 7053 Msar Lady Eston 5424 Msar Lady Eston 129	A A R High Five 8563 Simonson Forever 8051 Sitz Upward 307R MSAR Lady Eston 548	ANGUSGS

CED	BW	WW	YW	SC	MILK	MARB	RE	\$W	\$B	\$C
5	1.5	47	73	0.38	25	0.19	0.24	56	70	170

- Dam Record: BWR 3@106, WWR 3@110
- ADG 3.45



LOT 59

59 **Simonson KSeedstock 440** ★
 REG: 19914380 DOB: 02/06/20 TAT: 440

S A V Seedstock 4838 Kraye Seedstock DK 768 Queen DK 041	S A V Registry 2831 S A V Blackcap May 4136 S A V Final Answer 0035 Queen FK 871	Act BW 87 Adj WW/WWR 601 / 98 Adj YW 1275
Msar Industry 2778 MSRA Edella 4302 M S A R Edella 0821	Connealy Industry 5634 MSAR Blackcap 573 N Bar Emulation EXT M S A R Edella 821	ANGUSGS

CED	BW	WW	YW	SC	MILK	MARB	RE	\$W	\$B	\$C
2	3.1	52	96	0.41	20	0.30	0.26	38	99	174

- Dam Record: BWR 3@98, WWR 3@103
- ADG 4.56



LOT 61

61 **Simonson KSeedstock 1600** ★★★
 REG: 19928780 DOB: 03/14/20 TAT: 1600

S A V Seedstock 4838 Kraye Blackstock DK 768 Queen DK 041	S A V Registry 2831 S A V Blackcap May 4136 S A V Final Answer 0035 Queen FK 871	Act BW 81 Adj WW/WWR 595 / 97 Adj YW
HF Tiger 5T Msar Blackcap 454 Msar Blackcap 170	HF Kodiak 5R HF Echo 84R Sitz Upward 307R Msar Blackcap 170	ANGUSGS

CED	BW	WW	YW	SC	MILK	MARB	RE	\$W	\$B	\$C
9	0.5	48	87	1.13	25	0.29	0.26	49	102	198

- Dam Record: BWR 5@95, WWR 5@94
- ADG 3.27



Simonson KSeedstock 1420

★★★

62 REG: 19914385 DOB: 03/05/20 TAT: 1420

S A V Seedstock 4838	S A V Registry 2831	Act BW
Kraye Seedstock DK 768	S A V Blackcap May 4136	80
Queen DK 041	S A V Final Answer 0035	Adj WW/WWR
	Queen FK 871	623 / 102
	Sitz Upward 307R	Adj YW
	Sitz Eisa Evergreen 12S	
Sitz Top Seed 539X	A A R High Five 8563	
Msar Lady Eston 440	Msar Lady Eston 046	
Msar Lady Eston 240		

ANGUSGS

CED	BW	WW	YW	SC	MILK	MARB	RE	\$W	\$B	\$C
6	1.5	70	127	1.49	26	0.32	0.50	72	131	239

- Dam Record: BWR 5@89, WWR 5@99
- ADG 4.93



Seedstock Daughters



Simonson KSeedstock 1250

★★

63 REG: 19914379 DOB: 02/26/20 TAT: 1250

S A V Seedstock 4838	S A V Registry 2831	Act BW
Kraye Seedstock DK 768	S A V Blackcap May 4136	76
Queen DK 041	S A V Final Answer 0035	Adj WW/WWR
	Queen FK 871	554 / 91
	HF Tiger 5T	Adj YW
	HF Lucy 317Y	1132
HF Who's That 7A	Connealy Industry 5634	
Simonson Lady Eston 5800	MSAR Lady Eston 649	
Msar Lady Eston 949		

CED	BW	WW	YW	SC	MILK	MARB	RE	\$W	\$B	\$C
11	-0.7	51	90	1.08	24	0.06	0.39	53	101	194

- Dam Record: BWR 4@101, WWR 4@106
- ADG 3.8

Landmark Sons



Circle L Landmark #19148655

S Chisum 6175	S Alliance 3313
Circle L Gus	S Gloria 464
Circle L PRIDE X097	HARB Pendleton 765 J H
	Circle L Pride 38T
	S A V Iron Mountain 8066
S A V Angus Valley 1867	S A V May 2397
Circle L Queen 307B	Circle L Traveler 515S
CIRCLE L Queen 158z	Circle L Queen 25T

CED	BW	WW	YW	SC	MILK	MARB	RE	\$W	\$B	\$C
6	1.2	66	119	1.08	20	0.42	0.46	66	138	271



Simonson Landmark 830

★

64 REG: 19924248 DOB: 02/13/20 TAT: 830

Circle L Gus	S Chisum 6175	Act BW
Circle L Landmark	Circle L PRIDE X097	95
Circle L Queen 307B	S A V Angus Valley 1867	Adj WW/WWR
	CIRCLE L Queen 158z	615 / 100
	S A V Final Answer 0035	Adj YW
	S A V Blackbird 5297	1282
S A V Pioneer 7301	Connealy Industry 5634	
Msar Pride 412	Msar Pride 0462	
Msar Pride 912		

ANGUSGS

CED	BW	WW	YW	SC	MILK	MARB	RE	\$W	\$B	\$C
-5	3.9	72	132	1.00	17	0.12	0.59	54	118	207

- Dam Record: BWR 5@106, WWR 5@99
- ADG 4.16



LOT 65



LOT 67

65 **Simonson Landmark 450** ★★
 REG: 19924250 DOB: 02/07/20 TAT: 450

Circle L Gus	S Chisum 6175	Act BW
Circle L Landmark	Circle L PRIDE X097	86
Circle L Queen 307B	S A V Angus Valley 1867	Adj WW/WWR
	CIRCLE L Queen 158z	607 / 99
	Sitz Upward 307R	Adj YW
Sitz Top Seed 539X	Sitz Eisa Evergreen 12S	1154
Msar Pride 359	Leachman Right Time	ANGUS _{GS}
Msar Pride 179	Minerts Pride 679	

CED	BW	WW	YW	SC	MILK	MARB	RE	\$W	\$B	\$C
11	0.1	55	98	-0.49	21	0.25	0.38	57	113	226

- Dam Record: BWR 5@93, WWR 5@97
- ADG 3.76

67 **Simonson Landmark 380** ★★★
 REG: 19924247 DOB: 02/04/20 TAT: 380

Circle L Gus	S Chisum 6175	Act BW
Circle L Landmark	Circle L PRIDE X097	82
Circle L Queen 307B	S A V Angus Valley 1867	Adj WW/WWR
	CIRCLE L Queen 158z	590 / 96
	Sitz Dash 10277	Adj YW
Barstow Dash Y8	Barstow Queen W14	1222
Simonson Pride 4706	Connealy Industry 5634	ANGUS _{GS}
Simonson Pride 1438	Simonson Pride 6815	

CED	BW	WW	YW	SC	MILK	MARB	RE	\$W	\$B	\$C
6	0.4	47	84	0.53	16	0.28	0.62	39	91	182

- Dam Record: BWR 5@91, WWR 5@94
- ADG 3.85

66 **Simonson Landmark 690** ★★
 REG: 19924246 DOB: 02/12/20 TAT: 690

Circle L Gus	S Chisum 6175	Act BW
Circle L Landmark	Circle L PRIDE X097	86
Circle L Queen 307B	S A V Angus Valley 1867	Adj WW/WWR
	CIRCLE L Queen 158z	626 / 102
	HF Kodiak 5R	Adj YW
HF Tiger 5T	HF Echo 84R	1335
Msar GD Blackcap 574	Connealy Industry 5634	ANGUS _{GS}
Msar GD Blackcap 8745	Msar GD Blackcap 196	

CED	BW	WW	YW	SC	MILK	MARB	RE	\$W	\$B	\$C
7	2.2	63	108	2.04	25	-0.03	0.33	68	90	198

- Dam Record: BWR 3@102, WWR 3@101
- ADG 4.89

68 **Simonson Landmark 500** ★★
 REG: 19931307 DOB: 02/08/20 TAT: 500

Circle L Gus	S Chisum 6175	Act BW
Circle L Landmark	Circle L PRIDE X097	85
Circle L Queen 307B	S A V Angus Valley 1867	Adj WW/WWR
	CIRCLE L Queen 158z	601 / 98
	Connealy Forefront	Adj YW
Connealy Front Page 0228	Ebony Lit of Conanga 840	1217
Msar Pride 014	M S A R Fame 268	ANGUS _{GS}
Msar Pride 081	Minerts Pride 381	

CED	BW	WW	YW	SC	MILK	MARB	RE	\$W	\$B	\$C
7	0.1	49	78	0.53	24	0.29	0.19	57	94	200

- Dam Record: BWR 5@102, WWR 5@98
- ADG 4.50



Thank you Sandhills Cattleman and Zoetis for hosting the pen of three bred heifer contest. The Steamboat heifers were the People's Choice of the day.

Spur Out Sons



Marcys Spur Out 8116 #19193941

Connealy Stimulus 8419
Connealy Spur
 Jazza of Conanga 8594

H A Power Alliance 1025
 Black Creea of Conanga 5332
 TC Grid Topper 355
 Jemma of Conanga 5614
 Sitz Upward 307R
 Marcys Erica 393
 O C C Emblazon 854E
 Baldrige Treasure M510

Marcys Scale Crusher
Marcys Treasure 3160
 Marcys Treasure 015

CED	BW	WW	YW	SC	MILK	MARB	RE	\$W	\$B	SC
8	2.9	75	124	1.36	23	0.38	0.64	75	134	265

I purchased Spur Out from Marcys to clean up heifers. The bulls are moderate frame, thick, and smooth shouldered. I got along great calving.



Simonson Spur Out 1230

69 REG: 19938587 DOB: 02/26/20 TAT: 1230

Connealy Spur	Connealy Stimulus 8419	Act BW
Marcys Spur Out 8116	Jazza of Conanga 8594	88
Marcys Treasure 3160	Marcys Scale Crusher	Adj WW/WWR
	Marcys Treasure 015	732 / 120
	S Summit 4604	Adj YW
	M Diamond Emma E 543	1276
	HF Rising Son 13B	
Simonson GD Blackcap 802	Simonson GD Blackcap 4707	
Simonson GD Blackcap 6927		

CED	BW	WW	YW	SC	MILK	MARB	RE	\$W	\$B	SC
3	4.1	83	139	1.31	24	0.41	0.55	75	136	247

- Dam Record: BWR 1@112, WWR 1@120
- ADG 4.58

Whitenack Spur out 2150

70 REG: 19914407 DOB: 02/11/20 TAT: 2150

Connealy Spur	Connealy Stimulus 8419	Act BW
Marcys Spur Out 8116	Jazza of Conanga 8594	77
Marcys Treasure 3160	Marcys Scale Crusher	Adj WW/WWR
	Marcys Treasure 015	659 / 108
	O C C Paxton 730P	Adj YW
	Bohi Abigale 6014	1214
	HF Who's That 7A	
	MSAR Pride 881	
Msra Pride 848		
MSAR Pride 647		

CED	BW	WW	YW	SC	MILK	MARB	RE	\$W	\$B	SC
9	1.6	68	115	1.26	26	0.24	0.52	73	113	226

- Dam Record: BWR 1@99, WWR 1@108
- ADG 3.67





LOT 71



LOT 73

71 REG: 19941926 DOB: 02/12/20 TAT: 780

Connealy Stimulus 8419
 Connealy Spur
Marcys Spur Out 8116
 Marcys Treasure 3160

Barstow Cashman A24
Simonson Pride 867
 Simonson Pride 8067

Act BW	83
Adj WW/WWR	641 / 105
Adj YW	1268

CED	BW	WW	YW	SC	MILK	MARB	RE	\$W	\$B	SC
5	2.2	67	123	1.46	24	0.43	0.59	62	136	246

73 REG: 19938497 DOB: 02/14/20 TAT: 2180

Connealy Stimulus 8419
 Connealy Spur
Marcys Spur Out 8116
 Marcys Treasure 3160

S A V Renown 3439
Simonson Blackcap 8123
 Msar Blackcap 0922

Act BW	75
Adj WW/WWR	648 / 106
Adj YW	1226

CED	BW	WW	YW	SC	MILK	MARB	RE	\$W	\$B	SC
8	1.5	68	115		25			67		

- Dam Record: BWR 1@106, WWR 1@105
- ADG 4.02

- Dam Record: BWR 1@97, WWR 1@106
- ADG 4.05



LOT 72



LOT 74

72 REG: 19941929 DOB: 03/07/20 TAT: 1530

Connealy Stimulus 8419
 Connealy Spur
Marcys Spur Out 8116
 Marcys Treasure 3160

Connealy Expedition 2304
Simonson Lady Eston 876
 Simonson Lady Eston 676

Act BW	80
Adj WW/WWR	629 / 103
Adj YW	

ANGUS

CED	BW	WW	YW	SC	MILK	MARB	RE	\$W	\$B	SC
8	1.6	65	106	1.63	22	0.37	0.85	68	107	228

74 REG: 19941925 DOB: 02/10/20 TAT: 650

Connealy Stimulus 8419
 Connealy Spur
Marcys Spur Out 8116
 Marcys Treasure 3160

S A V Renown 3439
Jaylee Blackcap 8189
 Simonson Blackcap 490

Act BW	85
Adj WW/WWR	688 / 112
Adj YW	1341

CED	BW	WW	YW	SC	MILK	MARB	RE	\$W	\$B	SC
5	2.6	76	126	1.14	24	0.29	0.59	74	123	231

- Dam Record: BWR 1@102, WWR 1@103
- ADG 3.65

- Dam Record: BWR 1@108, WWR 1@112
- ADG 4.40



TMinert Spur Out 1380

★★★

75

REG: 19941928 DOB: 03/03/20 TAT: 1380

Connealy Spur
Marcys Spur Out 8116
 Marcys Treasure 3160

Connealy Stimulus 8419
 Jazza of Conanga 8594
 Marcys Scale Crusher
 Marcys Treasure 015
 Rito 707 of Ideal 3407 7075
 S A V Blackcap May 4136
 S A V Pioneer 7301
 Msar Queen 023

Act BW	77
Adj WW/WWR	706 / 115
Adj YW	

S A V Renown 3439
T Msar Queen 8124
 Msar Queen 323

ANGUSGS

CED	BW	WW	YW	SC	MILK	MARB	RE	\$W	\$B	\$C
2	2.2	71	127	0.65	20	0.04	0.65	63	108	191

- Dam Record: BWR 1@99, WWR 1@115
- ADG 4.36



Simonson Summit 870

★★★

77

REG: 19914403 DOB: 02/15/20 TAT: 870

S Summit 4604
M Diamond Summit 466
 M Diamond Emma E 543

S Summit 956
 S Lass 8245
 Sitz Dash 10277
 M Diamond Emma E 1170
 A A R Image Maker 6538
 A A R Donna 6514
 HF Done Right 32Y
 Msar Edella 035

Act BW	83
Adj WW/WWR	605 / 99
Adj YW	1242

A A R High Five 8563
Msar Edella 540
 Msar Edella 340

ANGUSGS

CED	BW	WW	YW	SC	MILK	MARB	RE	\$W	\$B	\$C
8	-0.7	49	93	1.25	33	0.05	0.29	61	82	160

- Dam Record: BWR 3@101, WWR 3@104
- ADG 4.25

Simonson Spur Out 1150

★★

76

REG: 19941927 DOB: 02/22/20 TAT: 1150

Connealy Spur
Marcys Spur Out 8116
 Marcys Treasure 3160

Connealy Stimulus 8419
 Jazza of Conanga 8594
 Marcys Scale Crusher
 Marcys Treasure 015
 HF Tiger 5T
 HF Lucy 317Y
 Mohnen South Dakota 402
 SHAINA Edella 706

Act BW	80
Adj WW/WWR	651 / 106
Adj YW	1219

HF Who's That 7A
Simonson Edella 8149
 Simonson Edella 5849

CED	BW	WW	YW	SC	MILK	MARB	RE	\$W	\$B	\$C
7	2.6	72	121		25			67		

- Dam Record: BWR 1@102, WWR 1@106
- ADG 3.78



Simonson Summit 1110

★★★

78

REG: 19914401 DOB: 02/22/20 TAT: 1110

S Summit 4604
M Diamond Summit 466
 M Diamond Emma E 543

S Summit 956
 S Lass 8245
 Sitz Dash 10277
 M Diamond Emma E 1170
 HF Done Right 125R
 HF Tibbie 126W
 Leachman Right Time
 Msar Blackcap 233

Act BW	83
Adj WW/WWR	615 / 100
Adj YW	1324

HF Done Right 32Y
Msar Blackcap 418
 MSAR Blackcap 718

ANGUSGS

CED	BW	WW	YW	SC	MILK	MARB	RE	\$W	\$B	\$C
8	-0.6	49	86	0.34	27	0.32	0.45	55	95	172

- Dam Record: BWR 5@99, WWR 5@97
- ADG 4.53



Dick and Loretta Marshall
 Zach and Makala Whitenack

Thank you to our crew!



LOT 79

Simonson Summit 1170 ★

79 REG: 19914386 DOB: 02/24/20 TAT: 1170

S Summit 4604
M Diamond Summit 466
 M Diamond Emma E 543

S Summit 956
 S Lass 8245
 Sitz Dash 10277
 M Diamond Emma E 1170

HF Tiger 5T
Msar GD Blackcap 485
 Msar GD Blackcap 885

HF Kodiak 5R
 HF Echo 84R
 Connealy Industry 5634
 Msar GD Blackcap 196

Act BW	87
Adj WW/WWR	541 / 88
Adj YW	1203
ANGUSGS	

CED	BW	WW	YW	SC	MILK	MARB	RE	\$W	\$B	\$C
6	1.8	42	77	0.77	31	0.34	0.39	53	91	193

- Dam Record: BWR 3@114, WWR 3@93
- ADG 4.27



LOT 81

Simonson Homestead 760 ★

81 REG: 19924252 DOB: 02/12/20 TAT: 760

CTS Remedy 1T01
Ellingson Homestead 6030
 EA Erica 1082

Connealy Thunder
 CTS 7V03 Bellemere Maid 9T02
 LT Territory 5824 of EA
 S A V Alliance 2606

HF Tiger 5T
Msar Edella 450
 Msar Edella 650

HF Kodiak 5R
 HF Echo 84R
 S A V 8180 Traveler 004
 Minerts Edella 664

Act BW	88
Adj WW/WWR	636 / 104
Adj YW	1316
ANGUSGS	

CED	BW	WW	YW	SC	MILK	MARB	RE	\$W	\$B	\$C
6	0.2	63	105	1.51	25	0.38	0.42	71	113	226

- Dam Record: BWR 3@101, WWR 3@98
- ADG 4.53

Simonson Homestead 920 ★

80 REG: 19928776 DOB: 02/17/20 TAT: 920

CTS Remedy 1T01
Ellingson Homestead 6030
 EA Erica 1082

Connealy Thunder
 CTS 7V03 Bellemere Maid 9T02
 LT Territory 5824 of EA
 S A V Alliance 2606

Connealy Industry 5634
Msar Forever Lady 276
 Msar Forever Lady 3252

Connealy Freightliner
 Eilera of Conanga 2583
 Sitz Alliance 6595
 Msar Forever Lady 148

Act BW	87
Adj WW/WWR	691 / 113
Adj YW	1331
ANGUSGS	

CED	BW	WW	YW	SC	MILK	MARB	RE	\$W	\$B	\$C
-1	3.1	84	147	0.60	18	0.18	0.68	71	125	218

- Dam Record: BWR 6@105, WWR 7@103
- ADG 4.27



LOT 82

Simonson Homestead 1040 ★

82 REG: 19924249 DOB: 02/21/20 TAT: 1040

CTS Remedy 1T01
Ellingson Homestead 6030
 EA Erica 1082

Connealy Thunder
 CTS 7V03 Bellemere Maid 9T02
 LT Territory 5824 of EA
 S A V Alliance 2606

HF Who's That 7A
Msar Lady Eston 562
 Msar Lady Eston 1045

HF Tiger 5T
 HF Lucy 317Y
 TC Aberdeen 759
 MSAR Lady Eston 948

Act BW	87
Adj WW/WWR	613 / 100
Adj YW	1224
ANGUSGS	

CED	BW	WW	YW	SC	MILK	MARB	RE	\$W	\$B	\$C
6	1.7	68	125	0.77	23	0.39	1.00	69	143	257

- Dam Record: BWR 4@101, WWR 4@104
- ADG 3.71

Reference Sire



Ellingson Homestead 6030

Roughrider Sons



Ellingson Roughrider 4202 #17933463

Connealy Consensus
Connealy Earnan 076E
 Brazila of Conanga 3991 839A

KMK Alliance 6595 187
 Bliinda of Conanga 004
 Connealy Tobin
 Breesha of Conanga 1251
 S A V 8180 Traveler 004
 SAV Blackclass 203 EA
 Basin Max 602C
 G A R Blackclass 1485

LT Curve Bender 4810 of EA
EA Blackclass 8914
 SAV Blackclass 374

CED	BW	WW	YW	SC	MILK	MARB	RE	\$W	\$B	\$C
-3	2.3	63	114	1.44	22	0.56	0.36	59	129	241

These cattle are deep ribbed and full of muscle.

Simonson Roughrider 1100

83

REG: 19914326 DOB: 02/21/20 TAT: 1100

Connealy Earnan 076E
Ellingson Roughrider 4202
 EA Blackclass 8914

Connealy Consensus
 Brazila of Conanga 3991 839A
 LT Curve Bender 4810 of EA
 SAV Blackclass 374
 Mohnen Density 730
 Mohnen Jilt 539
 Msar Shaker 2307
 Simonsons Pride 994

Act BW	101
Adj WW/WWR	648 / 106
Adj YW	1320

ANGUSGS

Mohnen South Dakota 402
Simonson Pride 5834
 Simonson Pride 1401

CED	BW	WW	YW	SC	MILK	MARB	RE	\$W	\$B	\$C
-9	4.6	80	141	0.30	22	0.49	0.63	65	161	250

- Dam Record: BWR 4@111, WWR 4@100
- ADG 4.38

Simonson Roughrider 480

85

REG: 19925564 DOB: 02/07/20 TAT: 480

Connealy Earnan 076E
Ellingson Roughrider 4202
 EA Blackclass 8914

Connealy Consensus
 Brazila of Conanga 3991 839A
 LT Curve Bender 4810 of EA
 SAV Blackclass 374
 HF Done Right 125R
 HF Tibbie 126W
 S A V Iron Mountain 8066
 Msar Pride 238

Act BW	89
Adj WW/WWR	620 / 101
Adj YW	1191

ANGUSGS

HF Done Right 32Y
Msar Pride 410
 Msar Pride 110

CED	BW	WW	YW	SC	MILK	MARB	RE	\$W	\$B	\$C
4	1.4	56	98	0.39	21	0.32	0.65	53	124	217

- Dam Record: BWR 5@110, WWR 5@101
- ADG 3.36



Simonson Roughrider 330

84

REG: 19925680 DOB: 02/01/20 TAT: 330

Connealy Earnan 076E
Ellingson Roughrider 4202
 EA Blackclass 8914

Connealy Consensus
 Brazila of Conanga 3991 839A
 LT Curve Bender 4810 of EA
 SAV Blackclass 374
 A A R Image Maker 6538
 A A R Donna 6514
 Connealy Front Page 0228
 Msar Edella 367

Act BW	88
Adj WW/WWR	549 / 90
Adj YW	1170

ANGUSGS

A A R High Five 8563
Msar Edella 142
 Msar Edella 767

CED	BW	WW	YW	SC	MILK	MARB	RE	\$W	\$B	\$C
-2	3.3	61	115	1.32	25	0.29	0.50	55	149	257

- Dam Record: BWR 5@101, WWR 5@100
- ADG 3.82

Simonson Roughrider 770

86

REG: 19925678 DOB: 02/12/20 TAT: 770

Connealy Earnan 076E
Ellingson Roughrider 4202
 EA Blackclass 8914

Connealy Consensus
 Brazila of Conanga 3991 839A
 LT Curve Bender 4810 of EA
 SAV Blackclass 374
 Connealy Freightliner
 Msar Pride 538
 Leachman Right Time
 MSAR Edella 506

Act BW	95
Adj WW/WWR	699 / 114
Adj YW	1419

ANGUSGS

Msar Shaker 2307
Shaina Edella 2546
 SHAINA Edella 706

CED	BW	WW	YW	SC	MILK	MARB	RE	\$W	\$B	\$C
1	3.9	78	131	0.94	19	0.35	0.55	68	121	228

- Dam Record: BWR 7@98, WWR 7@105
- ADG 4.69



LOT 87

87 **Simonson Roughrider 1760** ★
 REG: 19914333 DOB: 02/13/20 TAT: 1760

Connealy Earnan 076E
Ellingson Roughrider 4202
 EA Blackclass 8914

Connealy Consensus
 Brazila of Conanga 3991 839A
 LT Curve Bender 4810 of EA
 SAV Blackclass 374
 S A V 8180 Traveler 004
 S A V Emblynette 1182
 B C Matrix 4132
 Bar S PRIDE 4246

Act BW
92
Adj WW/WWR
595 / 97
Adj YW
1323

ANGUSGS

S A V 004 Predominant 4438
Simonson Pride 4733
 Simonson Pride 9200

CED	BW	WW	YW	SC	MILK	MARB	RE	\$W	\$B	\$C
-2	2.5	67	128	0.57	31	0.80	0.56	72	158	269

- Dam Record: BWR 5@103, WWR 5@103
- ADG 4.56
- This bull puts it all together.



LOT 89

89 **Simonson Roughrider 710** ★
 REG: 19914331 DOB: 02/13/20 TAT: 710

Connealy Earnan 076E
Ellingson Roughrider 4202
 EA Blackclass 8914

Connealy Consensus
 Brazila of Conanga 3991 839A
 LT Curve Bender 4810 of EA
 SAV Blackclass 374
 Sandy Bar Advantage 43M
 Wilbar Ruby 955N
 HF Challenger 42N
 HF Tibbie 37N

Act BW
93
Adj WW/WWR
602 / 98
Adj YW
1215

HF Kodiak 5R
HF Tibbie 14Z
 HF Tibbie 43R

CED	BW	WW	YW	SC	MILK	MARB	RE	\$W	\$B	\$C
-1	2.6	56	98	1.06	23	0.48	0.33	50	132	230

- Dam Record: BWR 6@105, WWR 6@99
- ADG 4.07



LOT 88

88 **Simonson Roughrider 670** ★
 REG: 19925583 DOB: 02/11/20 TAT: 670

Connealy Earnan 076E
Ellingson Roughrider 4202
 EA Blackclass 8914

Connealy Consensus
 Brazila of Conanga 3991 839A
 LT Curve Bender 4810 of EA
 SAV Blackclass 374
 Sitz Upward 307R
 Sitz Eisa Evergreen 12S
 Sitz Traveler 8180
 Msar Pride 9200

Act BW
87
Adj WW/WWR
577 / 94
Adj YW
1143

ANGUSGS

Sitz Top Seed 539X
Msar Pride 303
 Msar Pride 1516

CED	BW	WW	YW	SC	MILK	MARB	RE	\$W	\$B	\$C
-5	4.9	55	93	1.50	19	0.77	0.35	40	126	232

- Dam Record: BWR 5@99, WWR 6@93
- ADG 3.91



LOT 90

90 **TM Minert Renown 250** ★
 REG: 19928765 DOB: 01/29/20 TAT: 250

S A V Renown 3439
J Simonson Renown 1798
 Simonson Forever 8051

Rito 707 of Ideal 3407 7075
 S A V Blackcap May 4136
 Leachman Right Time
 Simonson Forever 5709
 HF Tiger 5T
 HF Lucy 317Y
 A A R High Five 8563
 Msar G D Blackcap 591

Act BW
87
Adj WW/WWR
677 / 111
Adj YW
1296

ANGUSGS

HF Who's That 7A
MSAR GD Blackcap 131
 Msar GD Blackcap 131

CED	BW	WW	YW	SC	MILK	MARB	RE	\$W	\$B	\$C
0	2.8	65	110	0.06	24	0.15	0.57	63	109	209

- Dam Record: BWR 3@96, WWR 3@107
- ADG 3.93



J Simonson Renown 320 ★

91 REG: 19914402 DOB: 02/01/20 TAT: 320

S A V Renown 3439
J Simonson Renown 1798
 Simonson Forever 8051

Rito 707 of Ideal 3407 7075
 S A V Blackcap May 4136
 Leachman Right Time
 Simonson Forever 5709
 A A R Image Maker 6538
 A A R Donna 6514
 Connealy Industry 5634
 Msar Pride 279

Act BW	95
Adj WW / WWR	619 / 101
Adj YW	1190

ANGUSGS

A A R High Five 8563
Msar Pride 470
 Msar Pride 970

CED	BW	WW	YW	SC	MILK	MARB	RE	\$W	\$B	\$C
-1	1.6	52	89	0.06	21	0.30	0.38	49	69	140

- Dam Record: BWR 5@99, WWR 5@91
- ADG 3.56

Reference Sire



S A V Renown 3439

Simonson JRenown 310

93 REG: 19914406 DOB: 01/31/20 TAT: 310

S A V Renown 3439
J Simonson Renown 1798
 Simonson Forever 8051

Rito 707 of Ideal 3407 7075
 S A V Blackcap May 4136
 Leachman Right Time
 Simonson Forever 5709
 HF Tiger 5T
 HF Lucy 317Y
 A A R High Five 8563
 Msar Pride 816

Act BW	88
Adj WW / WWR	604 / 99
Adj YW	1303

ANGUSGS

HF Who's That 7A
Msar Pride 5449
 Msar Pride 0955

CED	BW	WW	YW	SC	MILK	MARB	RE	\$W	\$B	\$C
1	2.2	58	102	-0.12	23	0.52	0.38	54	123	228

- Dam Record: BWR 3@93, WWR 3@100



Simonson JRenown 260

92 REG: 19914405 DOB: 01/29/20 TAT: 260

S A V Renown 3439
J Simonson Renown 1798
 Simonson Forever 8051

Rito 707 of Ideal 3407 7075
 S A V Blackcap May 4136
 Leachman Right Time
 Simonson Forever 5709
 Sitz Traveler 8180
 S A V Emulous 8145
 Connealy Industry 5634
 MSAR Lady Eston 649

Act BW	85
Adj WW / WWR	623 / 102
Adj YW	1332

ANGUSGS

S A V Final Answer 0035
Shaina Lady Eston 149
 Msar Lady Eston 949

CED	BW	WW	YW	SC	MILK	MARB	RE	\$W	\$B	\$C
6	-0.1	51	89	0.44	22	0.17	0.23	52	80	157

- Dam Record: BWR 8@92, WWR 8@96



Simonson Achievement 240 ★★★

94 REG: 19931306 DOB: 01/26/20 TAT: 240

Poss Lasting Impact 3118
Poss Achievement
 Poss Erica 327

Poss Easy Impact 0119
 Poss Blackbird 005
 KM Broken Bow 002
 Poss Erica 1203
 A A R Image Maker 6538
 A A R Donna 6514
 Connealy Industry 5634
 Msar Pride 579

Act BW	74
Adj WW / WWR	622 / 102
Adj YW	1233

ANGUSGS

A A R High Five 8563
Msar Pride 478
 Msar Pride 179

CED	BW	WW	YW	SC	MILK	MARB	RE	\$W	\$B	\$C
11	0.5	65	113	1.20	26	0.76	0.38	72	129	228

- Dam Record: BWR 5@94, WWR 5@97
- ADG 4.00
- Very smooth made bull.



LOT 95

Simonson Who's That 600 ★

95

REG: 19928767 DOB: 02/09/20 TAT: 600

HF Who's That 7A
Msar Who's That 4147
Msar GD Blackcap 8745

HF Tiger 5T
HF Lucy 317Y
Connealy Industry 5634
Msar GD Blackcap 196
A A R High Five 8563
Msar GD Blackcap 095
HF Done Right 32Y
Msar Pride 932

Act BW	75
Adj WW/WWR	641 / 105
Adj YW	1315

Msar High Five 8452
MSAR Pride 6528
Msar Pride 332

ANGUSGS

CED	BW	WW	YW	SC	MILK	MARB	RE	\$W	\$B	\$C
5	2.0	69	121	1.92	21	0.61	0.51	65	151	257

- Dam Record: BWR 2@94, WWR 2@108
- ADG 4.25



LOT 98

Simonson Maverick 280 ★

97

REG: 19928840 DOB: 01/30/20 TAT: 280

Basin Payweight 1682
Poss Maverick
Poss Pride 5163

Basin Payweight 006S
21AR O Lass 7017
Poss Hoover Dam 2509
Poss Pride 9526

Act BW	89
Adj WW/WWR	638 / 104
Adj YW	1320

A A R High Five 8563
Msar Pride 1030
Msar Pride 839

A A R Image Maker 6538
A A R Donna 6514
Connealy Freightliner
Msar Pride 6561

ANGUSGS

CED	BW	WW	YW	SC	MILK	MARB	RE	\$W	\$B	\$C
4	1.2	70	133	1.99	26	0.56	0.40	69	155	258

- Dam Record: BWR 8@109, WWR 8@107
- ADG 4.47
- Long and smooth made Maverick.



LOT 96

Simonson Stunner 1390 ★

96

REG: 19925801 DOB: 03/04/20 TAT: 1390

LD Capitalist 316
Musgrave 316 Stunner
MCATL Blackbird 831-1378

Connealy Capitalist 028
LD Dixie Erica 2053
MCATL Pure Product 903-55
MCATL Blackbird 1378-573
Barstow Cash
Msar Blackcap 320
A A R High Five 8563
Msar Pride 579

Act BW	92
Adj WW/WWR	725 / 118
Adj YW	

Msar Cash 2525
Msar Pride 779
Msar Pride 479

ANGUSGS

CED	BW	WW	YW	SC	MILK	MARB	RE	\$W	\$B	\$C
-1	3.4	83	131	1.56	26	0.45	0.49	80	139	239

- Dam Record: BWR 2@110, WWR 2@115
- ADG 3.51



LOT 98

Simonson Maverick 460 ★

98

REG: 19927666 DOB: 02/07/20 TAT: 460

Basin Payweight 1682
Poss Maverick
Poss Pride 5163

Basin Payweight 006S
21AR O Lass 7017
Poss Hoover Dam 2509
Poss Pride 9526

Act BW	94
Adj WW/WWR	667 / 109
Adj YW	1405

A A R High Five 8563
Msar Pride 339
Msar Pride 839

A A R Image Maker 6538
A A R Donna 6514
Connealy Freightliner
Msar Pride 6561

ANGUSGS

CED	BW	WW	YW	SC	MILK	MARB	RE	\$W	\$B	\$C
4	1.2	73	134	1.34	37	1.01	0.51	88	155	255

- Dam Record: BWR 6@108, WWR 6@102
- ADG 4.78

TM Minert Maverick 1070 ★

99 REG: 19927661 DOB: 02/20/20 TAT: 1070

Basin Payweight 1682	Basin Payweight 006S	Act BW
Poss Maverick	21AR O Lass 7017	89
Poss Pride 5163	Poss Hoover Dam 2509	Adj WW/WWR
	Poss Pride 9526	593 / 97
	S A V Final Answer 0035	Adj YW
Connealy Answer 71	Euro Reeka of Conanga 3539	1231
Msar Queen Eva 465	TC Aberdeen 759	ANGUSGS
Msar Queen Eva 1046	Msar Queen Eva 961	

CED	BW	WW	YW	SC	MILK	MARB	RE	\$W	\$B	\$C
1	2.2	64	117	1.09	33	0.90	0.48	72	157	265

- Dam Record: BWR 3@104, WWR 3@100
- ADG 3.69



LOT 102

Simonson Maverick 360 ★★

100 REG: 19927520 DOB: 02/03/20 TAT: 360

Basin Payweight 1682	Basin Payweight 006S	Act BW
Poss Maverick	21AR O Lass 7017	84
Poss Pride 5163	Poss Hoover Dam 2509	Adj WW/WWR
	Poss Pride 9526	662 / 108
	HF Kodiak 5R	Adj YW
HF Tiger 5T	HF Echo 84R	1379
Msar Lady Eston 573	A A R High Five 8563	ANGUSGS
Msar Lady Eston 345	Msar Lady Eston 1045	

CED	BW	WW	YW	SC	MILK	MARB	RE	\$W	\$B	\$C
6	1.5	68	127	1.02	36	1.05	0.60	78	158	254

- Dam Record: BWR 4@95, WWR 4@106
- ADG 4.67



LOT 101

Simonson Raindance 350 ★★

102 REG: 19924259 DOB: 02/02/20 TAT: 350

Coleman Charlo 0256	O C C Paxton 730P	Act BW
S A V Raindance 6848	Bohi Abigale 6014	88
S A V Blackcap May 4136	S A V 8180 Traveler 004	Adj WW/WWR
	S A V May 2397	586 / 96
	A A R Image Maker 6538	Adj YW
A A R High Five 8563	A A R Donna 6514	1263
Msar Pride 207	Connealy Industry 5634	ANGUSGS
Msar Pride 907	Msar Pride 407	

CED	BW	WW	YW	SC	MILK	MARB	RE	\$W	\$B	\$C
13	-0.4	64	116	1.24	23	0.23	0.52	68	103	210

- Dam Record: BWR 7@100, WWR 7@103
- ADG 4.13



LOT 103

TM Minert Raindance 340 ★

101 REG: 19924257 DOB: 02/01/20 TAT: 340

Coleman Charlo 0256	O C C Paxton 730P	Act BW
S A V Raindance 6848	Bohi Abigale 6014	98
S A V Blackcap May 4136	S A V 8180 Traveler 004	Adj WW/WWR
	S A V May 2397	597 / 98
	A A R Image Maker 6538	Adj YW
A A R High Five 8563	A A R Donna 6514	1256
Msar Queen Eva 355	S A V Final Answer 0035	ANGUSGS
Msar Queen Eva 199	Msar Queen Eva 988	

CED	BW	WW	YW	SC	MILK	MARB	RE	\$W	\$B	\$C
6	2.6	69	126	0.66	21	0.23	0.36	61	115	209

- Dam Record: BWR 5@111, WWR 5@106
- ADG 4.25

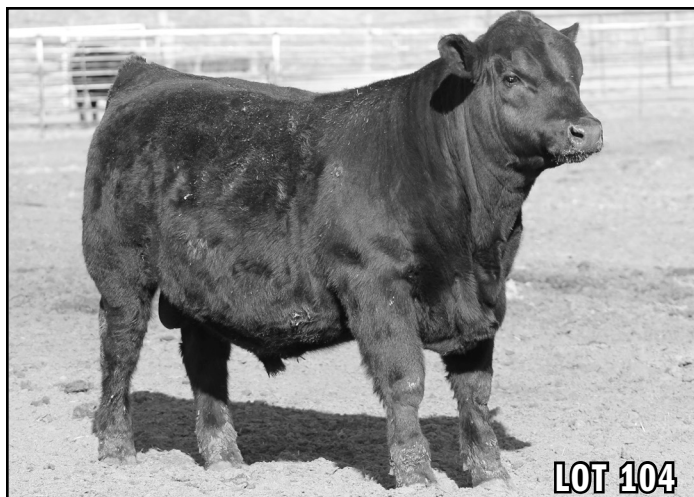
Simonson Blackout 1190 ★★

103 REG: 19929060 DOB: 02/24/20 TAT: 1190

Jindra Acclaim	Jindra 3rd Dimension	Act BW
Jindra Blackout	Jindra Blackbird Lassy 1111	85
Jindra Judy J 1314 3150	G T Shear Force	Adj WW/WWR
	Hoff Judy S C 669 1314	699 / 114
	A A R High Five 8563	Adj YW
Msar High Five 8452	Msar GD Blackcap 095	1411
MSAR Pride 6527	S A V Final Answer 0035	ANGUSGS
Msar Pride 327	Msar Pride 127	

CED	BW	WW	YW	SC	MILK	MARB	RE	\$W	\$B	\$C
10	1.7	69	132	0.85	35	0.03	0.71	78	141	230

- Dam Record: BWR 3@100, WWR 3@103
- ADG 4.49



104 **Simonson Wind Over 1300** ★★★
 REG: 19928779 DOB: 03/01/20 TAT: 1300

A A R Wind Over 3822	V D A R Really Windy 4097	Act BW
A A R Wind Over 5560	A A R Blackcap Kay 8824	83
A A R Blackbird 6621	Rito 616 of 4B20 6807	Adj WW / WWR
	A A R Blackbird 2469	617 / 100
S A V Final Answer 0035	Sitz Traveler 8180	Adj YW
Msar Van Pride 284	S A V Emulous 8145	1243
Msar Van Pride 884	Connealy Industry 5634	ANGUSGS
	Msar Van Pride 284	

CED	BW	WW	YW	SC	MILK	MARB	RE	\$W	\$B	\$C
16	-1.3	62	107	1.77	30	0.10	-0.21	76	71	148

- Dam Record: BWR 5@100, WWR 5@103
- ADG 4.02
- This bull may grow into something.

105 **Simonson Justified Son 580** ★
 REG: 19914384 DOB: 02/09/20 TAT: 580

KG Justified 3023	Connealy Judgment	Act BW
A A R Justified 8176	KG Miss Magic 1443	88
A A R Blackbird 9044	B C Matrix 4132	Adj WW / WWR
	A A R Blackbird 7026	692 / 113
HF Who's That 7A	HF Tiger 5T	Adj YW
MSAR Pride 6545	HF Lucy 317Y	1322v
Msar Pride 432	A A R High Five 8563	ANGUSGS
	Msar Pride 932	

CED	BW	WW	YW	SC	MILK	MARB	RE	\$W	\$B	\$C
7	0.7	76	132	1.51	26	0.45	0.87	82	144	255

- Dam Record: BWR 3@106, WWR 3@115
- ADG 4.06



LOOKING AT THE COW OR THE COMPUTER?

I just wanted to share some of my thoughts on the data and numbers that are provided in this catalog. Sometimes we get backed into the corner with the idea of using genomics, ultrasound and focus on these numbers too much. The problem I have is that the dollar value is supposed to be a fix-all for all environments. Personally, that is why I don't give them a lot of credibility and was excited about the new views of our board members which is, "Let's get back to raising cattle."

This set of numbers works great for the computer by stacking the numbers of the sires and dams and hopefully one of the progeny can walk to the tank. Sire identification is a useful tool by genomics but giving blood more influence than actual raw data (birth, weaning, ultrasound) is concerning to me. Sometimes you are not provided with actual weaning or ultrasound data, why do it when the actual raw data will only move an EPD about 15%. In my eyes, there are still a lot of mysteries out there and would be happy to discuss them with you. Please contact me if you have any questions about the data that we provide. - JW Simonson

AVERAGE EPDS FOR CURRENT ANGUS SIRES

PRODUCTION									
CED	BW	WW	YW	RADG	DMI	YH	SC	DOC	
6	1.2	56	99	0.24	0.81	0.5	0.78	16	

MATERNAL					
HP	CEM	MILK	MW	MH	\$EN
10.7	8	25	51	0.3	-13

CARCASS			
CW	MARB	RE	FAT
40	0.51	0.53	0.012

\$VALUES					
\$M	\$W	\$F	\$G	\$B	\$C
54	56	82	44	127	219



Selling

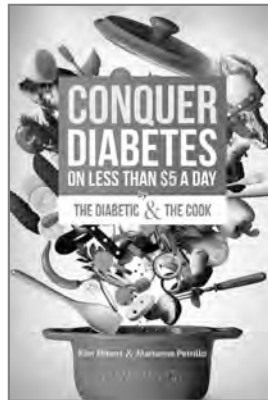
Sorrel Seven Year Old Well Broke Ranch Gelding

Goes back to Sugar Bars, Three Bars, and Sun Frost

**Consigned by
Mike & Peggy Coffman**

308-533-2294

Mike and Peggy have been selling a horse in our sale for nearly 20 years!



DeRail diabetes is a book for diabetics by diabetics. Kim Minert and Dr Helen Hilts are in the trenches with you. You can stay on track for a long and healthy life, and all for under five dollars a day. Order a copy on Amazon, deraiddiabetes.com, or contact Kim Minert at 602-527-2341.

Congrats Makala Whitenack on your black powder state record with a score of 186!



In Loving Memory

Print Zutavern - Riggin Anderson - Ty Milleson

Our community has been hit hard by the loss of three great future cattlemen who sat in the seats at our sale last February. Print Zutavern, Riggin Anderson and Ty Milleson each were different in their own way, friends with each other and shared the same drive and determination to take on the next generation of raising quality cattle. The rolling hills of the Sandhills may never quite be the same but each one of these men made an incredible impact in their earthly life.

Minert/Simonson Angus sends condolences to the family and friends of Print, Riggin and Ty. Let us remember the great legacy that they each have left behind.



Minert-Simonson Angus

83450 Hawley Flats Ave

Dunning NE 68833

FIRST CLASS MAIL

DO NOT DELAY



ANNUAL BULL SALE

FEBRUARY 20, 2021

1:00 PM / AT THE RANCH / DUNNING, NEBRASKA

Real Time Angus



105 YEARLING ANGUS BULLS
1 WELL BROKE GELDING

DVAuction
Broadcasting Real-Time Auctions