

MINERT
Angus
SIMONSON



Annual Bull Sale
FEBRUARY 19, 2022

1:00 PM CT / AT THE RANCH / DUNNING, NEBRASKA

SELLING 110 YEARLING ANGUS BULLS PLUS 20 COMMERCIAL REPLACEMENT HEIFERS

REAL TIME ANGUS *Bred and Fed in the Sandhills*



JW, Cindy, Jaylee, and Shaina Simonson



Anthony, Andrea, Kim, Carrol, Tim, Alexa and Sam
(not pictured Alexander & Alannah)



Wes, Hailey, and Landon Minert

Dear Cattlemen,

Welcome to our annual bull sale on February 19, 2022. We thank you for your continued support in our program and look forward to seeing you on sale day. We are currently calving several daughters from the same sire progeny that are offered in the bull sale. These sires include TK Steamboat, Circle L Gus, U-2 Coalition and Kraye Seedstock. We encourage you to view the 2022 offering prior to the sale to allow time to evaluate the heifer mates and cow/calf pairs as well.

Our program is based on the Sandhills grass with no creep supplement. We run our cows on after growth meadows after weaning with supplement of 25% cake or tub until they calve. Prairie hay and cake are then fed until breeding time. The feed wagon is only used 25 days during the breeding season. The average daily gain test began the day the calves were weaned and weighed. (September 17, 2021) The bulls were then weighed the first week in January (January 10, 2022).

Our bull development program and excellent disposition traits continue to be one of the highlights of our program. The bulls are feed in one group on a 25 acre meadow with rations that consist of soy hulls, 12% DDGS, mineral supplements and ground prairie hay.

The bulls are not separated into contemporary groups when ratios are compared. The ratios provided in the catalog are compared with all bulls in the sale.

Our commitment continues to maintain focus on breeding cattle that have the same balance of structure and performance and will perform strong in your breeding program. Buy with confidence from a program that has been a leader within the breed for over fifty years and will continue to be here to serve you in the future. We can always assist those who are unable to attend the sale. Sight, unseen purchases come with a 100% satisfaction guarantee.

We are thankful for our customers, friends, family and neighbors who make sale day happen. Please call or stop by anytime and join us for lunch and pie on sale day!

JW and Cindy Simonson

When analyzing calving ease, take the combination of actual individual birth weight, dam's birth ratio, the BW EPD, and the CED number. The higher the CED number the greater the calving ease.

CALVING EASE STARS ★★ ★

Bull is recommended Highly for use on heifers to sire light birth weight calves.
Bull is designated to work on heifers that are larger framed with more management.
Bull is recommended Highly for use on cows.

JW & Cindy Simonson
Carrol, Tim & Wes Minert
83450 Hawley Flats Ave
Dunning, NE 68833

Home (308) 538-2548
JW Cell (308) 880-0079





Annual Bull Sale

SATURDAY - 1:00 PM

FEBRUARY 19, 2022

AT THE RANCH - DUNNING, NE

Selling

110 YEARLING ANGUS BULLS
AND 20 COMMERCIAL HEIFERS

SALE LOCATION

Minert/Simonson Angus Ranch

42099 Roseberry Road / Dunning, NE 68833

Located three miles east of Dunning, NE on Highway 91.

Turn at the Minert/Simonson sign and go three miles Southeast.

SALE DAY PHONES

Sale Day Phone.....308-538-2676

J.W. Simonson.....308-880-0079

AUCTIONEER

Joe Goggins.....406-373-6844

REPRESENTATIVES

American Angus Association.....Levi Landers, 308-730-1396

Western Livestock Journal.....Jim Gies, 970-454-3836

Western Ag Reporter.....Alan Sears, 970-396-7521

Buyers unable to attend the sale may send bids to any of the above representatives or MINERT/SIMONSON ANGUS. Satisfaction is GUARANTEED on all bids.

LUNCH A complimentary lunch will be served on sale day. Join us for pie after the sale as well!

LODGING

Super 8.....Broken Bow & Ainsworth, 800-800-8000

Rodeway Inn.....Thedford, 308-645-2284

Cobblestone Hotel & Suites.....Broken Bow, 308-767-2060

Halsey Frontier Inn.....308-533-2240

RETAINED INTEREST MSAR is retaining 1/3 interest in all bulls sold, unless otherwise stated in catalog or on the block. This does not restrict your use since you have full possession. Very few bulls will actually be collected and when it does occur we will work with the buyer.

INSURANCE Mortality insurance (death or injury resulting in death) will be available through American Livestock Insurance.

NUTRITION The bulls are not creep fed! They are developed on the ranch on 25 acres with 100 percent of the roughage grass hay. Bulls have not been fed any corn. The complete ration includes soy hulls, 12% DDGS, supplement, molasses and ground hay.

Ed Sabaka.....308-379-7848

ULTRASOUND Ultrasound for back fat, marbling, and ribeye will be available sale day and on our website and Facebook page prior to the sale.

FERTILITY Bulls will be semen tested and scrotal measurements will be available sale day and on our website and Facebook page prior to the sale.

EPDS EPDs are now being updated weekly. The EPDs printed in this catalog are as of the week of 1/19/22.

GUARANTEE All bulls are guaranteed against breeding injury for the first breeding season. Breeding season is defined as the 90 day period following the first turnout of the bulls. Credit for the purchase amount less \$1,500 (buyer keeps salvage value) will be applied toward a replacement of an injured bull. Credit is for a replacement bull or credit in the 2023 sale.

VOLUME DISCOUNT A \$100 discount off third bull purchased and \$100 off for each additional bull.

FREE WINTERING & DELIVERY Bulls will have excellent care and will be delivered in early April 2022.

ONLINE BIDDING Online bidding is available through DVAuction.com. Please register on DV Auction at least 24 hours before the sale. A full time support team can also be reached at 402-474-5557.

DVAuction
Broadcasting Real-Time Auctions



MINERTSIMONSON.COM



Reference Sire

T K Steamboat D307 #18761484
 S A V RENOWN 3439 x S A V NET WORTH 4200

CED	BW	WW	YW	SC	MILK	MARB	RE	\$W	\$B	\$C
-9	5.3	92	157	1.49	26	0.13	0.65	80	131	231

Steamboat is very consistent on performance. He is in the top 1% on weaning and the top 2% on yearling in the angus breed. They are full of muscle with great eye appeal. He definitely stamps them all with a long, stout hip and loads of rib and thickness. Daughters are deep and soft-made with excellent udders.



LOT 1



Thank you Zach and Makala Whitenack for all you do!

1 **Simonson Steamboat 471** ★
 REG: 20192132 DOB: 01/23/21 TATTOO: 471

S A V Renown 3439
T K Steamboat D307
 T K Tesa W592

S A V Final Answer 0035
Msar Pride 327
 Msar Pride 127

Rito 707 of Ideal 3407 7075
 S A V Blackcap May 4136
 S A V Net Worth 4200
 T K Tesa R94
 Sitz Traveler 8180
 S A V Emulous 8145
 Sitz Upward 307R
 Msar Pride 521

Act BW	87
Adj WW / WWR	700 / 116
Adj YW	1335

ANGUSGS

CED	BW	WW	YW	SC	MILK	MARB	RE	\$W	\$B	\$C
2	2.1	82	140	0.85	24	0.30	0.49	82	123	230

- Dam Record: BWR 7@94, WWR 7@97
- ADG 4.28
- A rare individual. He is a moderate frame with a big top, long hip, and is the Sandhills female making kind. Weaning ratio of 116 and yearling at 109.



LOT 2

2 **Simonson Steamboat 1201** ★
 REG: 20197714 DOB: 02/15/21 TATTOO: 1201

S A V Renown 3439	Rito 707 of Ideal 3407 7075	Act BW
T K Steamboat D307	S A V Blackcap May 4136	91
T K Tesa W592	S A V Net Worth 4200	Adj WW / WWR
	T K Tesa R94	651 / 108
	A A R Image Maker 6538	Adj YW
A A R High Five 8563	A A R Donna 6514	1345
Msar Lady Eston 346	TC Aberdeen 759	
Msar Lady Eston 1045	MSAR Lady Eston 948	

ANGUSGS

CED	BW	WW	YW	SC	MILK	MARB	RE	\$W	\$B	\$C
-1	3.2	84	148	1.77	27	0.05	0.76	80	111	197

- Dam Record: BWR 7@103, WWR 7@99
- ADG 4.67
- Stout cow bull that is in the top 3% of the breed in weaning and yearling EPD's. WN ratio 108.

4 **Simonson Steamboat 1951** ★
 REG: 20243072 DOB: 02/16/21 TATTOO: 1951

S A V Renown 3439	Rito 707 of Ideal 3407 7075	Act BW
T K Steamboat D307	S A V Blackcap May 4136	86
T K Tesa W592	S A V Net Worth 4200	Adj WW / WWR
	T K Tesa R94	574 / 95
	A A R Image Maker 6538	Adj YW
A A R High Five 8563	A A R Donna 6514	1270
Msar Pride 521	Sitz Upward 307R	
Msar Pride 121	Msar Pride 221	

ANGUSGS

CED	BW	WW	YW	SC	MILK	MARB	RE	\$W	\$B	\$C
0	2.8	70	118	0.99	26	0.31	0.58	68	123	230

- Dam Record: BWR 3@94, WWR 3@99
- ADG 4.47
- Well-balanced bull with good maternal history.

3 **Simonson Steamboat 461** ★
 REG: 20197716 DOB: 01/23/21 TATTOO: 461

S A V Renown 3439	Rito 707 of Ideal 3407 7075	Act BW
T K Steamboat D307	S A V Blackcap May 4136	87
T K Tesa W592	S A V Net Worth 4200	Adj WW / WWR
	T K Tesa R94	583 / 96
	S A V Final Answer 0035	Adj YW
S A V Pioneer 7301	S A V Blackbird 5297	1233
Msar GD Blackcap 386	A A R High Five 8563	
Msar GD Blackcap 086	Msar GD Blackcap 8745	

ANGUSGS

CED	BW	WW	YW	SC	MILK	MARB	RE	\$W	\$B	\$C
3	2.4	74	112	0.83	22	0.16	0.31	76	89	183

- Dam Record: BWR 6@97, WWR 6@95
- ADG 4.38
- Well-balanced bull with a good maternal background.

5 **Simonson Steamboat 821** ★
 REG: 20197717 DOB: 01/30/21 TATTOO: 821

S A V Renown 3439	Rito 707 of Ideal 3407 7075	Act BW
T K Steamboat D307	S A V Blackcap May 4136	98
T K Tesa W592	S A V Net Worth 4200	Adj WW / WWR
	T K Tesa R94	587 / 97
	HF Tiger 5T	Adj YW
HF Who's That 7A	HF Lucy 317Y	1320
Msar Pride 539	A A R High Five 8563	
Msar Pride 339	Msar Pride 839	

ANGUSGS

CED	BW	WW	YW	SC	MILK	MARB	RE	\$W	\$B	\$C
0	3.6	73	130	1.70	29	0.03	0.66	74	122	232

- Dam Record: BWR 5@113, WWR 5@98
- ADG 4.93



LOT 6

Simonson Steamboat 1051 ★

6 REG: 20197719 DOB: 02/08/21 TATTOO: 1051

S A V Renown 3439
T K Steamboat D307
 T K Tesa W592

Rito 707 of Ideal 3407 7075
 S A V Blackcap May 4136
 S A V Net Worth 4200
 T K Tesa R94
 HF Tiger 5T
 HF Lucy 317Y
 S A V Final Answer 0035
 Msar GD Blackcap 982

Act BW	96
Adj WW/WWR	693 / 115
Adj YW	1432

ANGUSGS

CED	BW	WW	YW	SC	MILK	MARB	RE	\$W	\$B	\$C
-2	5.1	81	136	1.47	29	-0.03	0.63	79	113	223

- Dam Record: BWR 5@100, WWR 5@102
- ADG 4.98
- Power bull! His mother always brings in the pounds, WN ratio 115.



LOT 7

Simonson Steamboat 851 ★

7 REG: 20192134 DOB: 01/31/21 TATTOO: 851

S A V Renown 3439
T K Steamboat D307
 T K Tesa W592

Rito 707 of Ideal 3407 7075
 S A V Blackcap May 4136
 S A V Net Worth 4200
 T K Tesa R94
 Connealy Earnan 076E
 EA Blacklass 8914
 A A R High Five 8563
 Msar Lady Eston 126

Act BW	92
Adj WW/WWR	700 / 116
Adj YW	1294

ANGUSGS

CED	BW	WW	YW	SC	MILK	MARB	RE	\$W	\$B	\$C
2	1.7	77	132	1.68	32	0.66	0.48	85	130	242

- Dam Record: BWR 3@104, WWR 3@111
- ADG 4.00
- Good stout bull with well-balanced numbers with a WN ratio of 116.

Simonson Steamboat 1161 ★

8 REG: 20197720 DOB: 02/12/21 TATTOO: 1161

S A V Renown 3439
T K Steamboat D307
 T K Tesa W592

Rito 707 of Ideal 3407 7075
 S A V Blackcap May 4136
 S A V Net Worth 4200
 T K Tesa R94
 Barstow Cash
 Msar Blackcap 320
 A A R High Five 8563
 Msar June 173

Act BW	85
Adj WW/WWR	695 / 115
Adj YW	1253

ANGUSGS

CED	BW	WW	YW	SC	MILK	MARB	RE	\$W	\$B	\$C
-2	3.7	86	133	0.05	26	0.39	0.30	87	112	225

- Dam Record: BWR 3@100, WWR 3@112
- ADG 3.76
- Good performance with a lot of maternal power.

Simonson Steamboat 791 ★

9 REG: 20197733 DOB: 01/30/21 TATTOO: 791

S A V Renown 3439
T K Steamboat D307
 T K Tesa W592

Rito 707 of Ideal 3407 7075
 S A V Blackcap May 4136
 S A V Net Worth 4200
 T K Tesa R94
 A A R Image Maker 6538
 A A R Donna 6514
 Connealy Freightliner
 Msar Pride 6561

Act BW	110
Adj WW/WWR	669 / 111
Adj YW	1267

ANGUSGS

CED	BW	WW	YW	SC	MILK	MARB	RE	\$W	\$B	\$C
-8	6.3	90	151	1.84	29	-0.14	0.56	79	118	203

- Dam Record: BWR 9@111, WWR 9@108
- ADG 4.03
- Bigger framed and longer spin than others. WN ratio of 111

Simonson Commercial Bull ★

10 REG: Commercial DOB: 02/10/21 TATTOO:

S A V Renown 3439
T K Steamboat D307
 T K Tesa W592

Rito 707 of Ideal 3407 7075
 S A V Blackcap May 4136
 S A V Net Worth 4200
 T K Tesa R94
 S A V Resource 1441
 Erica of Par 159

Act BW	88
Act WW	
Adj YW	1250

ANGUSGS

CED	BW	WW	YW	SC	MILK	MARB	RE	\$W	\$B	\$C

- Sells as commercial

Simonson Steamboat 841 ★

11 REG: 20197736 DOB: 01/30/21 TATTOO: 841

S A V Renown 3439
T K Steamboat D307
 T K Tesa W592

Rito 707 of Ideal 3407 7075
 S A V Blackcap May 4136
 S A V Net Worth 4200
 T K Tesa R94
 A A R High Five 8563
 Simonson Forever 8051
 Sitz Upward 307R
 MSAR Lady Eston 548

Act BW	87
Adj WW/WWR	617 / 102
Adj YW	1350

ANGUSGS

CED	BW	WW	YW	SC	MILK	MARB	RE	\$W	\$B	\$C
-2	2.3	80	128	0.95	25	0.48	0.17	84	112	226

- Dam Record: BWR 4@105, WWR 4@108
- ADG 4.93
- Stout bull with balanced numbers.

Simonson Steamboat 431 ★

12

REG: 20197738 DOB: 01/22/21 TATTOO: 431

S A V Renown 3439
T K Steamboat D307
 T K Tesa W592

Rito 707 of Ideal 3407 7075
 S A V Blackcap May 4136
 S A V Net Worth 4200
 T K Tesa R94
 HF Tiger 5T
 HF Lucy 317Y
 A A R High Five 8563
 Msar Pride 816

Act BW	87
Adj WW/WWR	618 / 102
Adj YW	1236

ANGUSGS

CED	BW	WW	YW	SC	MILK	MARB	RE	\$W	\$B	\$C
-3	4.1	75	122	1.73	23	0.29	0.51	69	123	241

- Dam Record: BWR 4@95, WWR 4@101
- ADG 4.16
- Performance and maternal.



LOT 15

Simonson Steamboat 241 ★

15

REG: 20197700 DOB: 01/17/21 TATTOO: 241

S A V Renown 3439
T K Steamboat D307
 T K Tesa W592

Rito 707 of Ideal 3407 7075
 S A V Blackcap May 4136
 S A V Net Worth 4200
 T K Tesa R94
 S Alliance 3313
 S Gloria 464
 Connealy Industry 5634
 Msar Pride 0614

Act BW	88
Adj WW/WWR	567 / 94
Adj YW	1348

ANGUSGS

CED	BW	WW	YW	SC	MILK	MARB	RE	\$W	\$B	\$C
-4	3.4	73	125	0.74	12	0.37	0.62	56	133	231

- Dam Record: BWR 8@100, WWR 8@96
- ADG 5.26
- Plenty of maternal power.



LOT 13

Simonson Steamboat 1661 ★

13

REG: 20197737 DOB: 01/19/21 TATTOO: 1661

S A V Renown 3439
T K Steamboat D307
 T K Tesa W592

Rito 707 of Ideal 3407 7075
 S A V Blackcap May 4136
 S A V Net Worth 4200
 T K Tesa R94
 HF Tiger 5T
 HF Lucy 317Y
 A A R High Five 8563
 Msar Pride 827

Act BW	93
Adj WW/WWR	698 / 115
Adj YW	1461

ANGUSGS

CED	BW	WW	YW	SC	MILK	MARB	RE	\$W	\$B	\$C
-9	5.5	104	175	1.64	25	-0.06	0.60	92	134	240

- Dam Record: BWR 3@106, WWR 3@106
- ADG 5.14
- A BULL that will introduce a little pasture power. WN ratio of 116 and yearling at 119. Top 1% of the breed on weaning and yearling EPD'S.

Simonson Steamboat 411 ★

16

REG: 20197749 DOB: 01/21/21 TATTOO: 411

S A V Renown 3439
T K Steamboat D307
 T K Tesa W592

Rito 707 of Ideal 3407 7075
 S A V Blackcap May 4136
 S A V Net Worth 4200
 T K Tesa R94
 Connealy Freightliner
 Eilera of Conanga 2583
 M S A R Fame 268
 M S A R Edella 8211

Act BW	89
Adj WW/WWR	593 / 98
Adj YW	1207

ANGUSGS

CED	BW	WW	YW	SC	MILK	MARB	RE	\$W	\$B	\$C
-1	4.0	75	129	1.05	21	-0.06	0.39	64	100	171

- Dam Record: BWR 8@98, WWR 8@95
- ADG 4.14
- Industry dam packed plenty of rib in this bull.

Simonson Steamboat 1121 ★

14

REG: 20197740 DOB: 02/11/21 TATTOO: 1121

S A V Renown 3439
T K Steamboat D307
 T K Tesa W592

Rito 707 of Ideal 3407 7075
 S A V Blackcap May 4136
 S A V Net Worth 4200
 T K Tesa R94
 HF Tiger 5T
 HF Lucy 317Y
 B C Matrix 4132
 Bar S PRIDE 4246

Act BW	86
Adj WW/WWR	678 / 112
Adj YW	1262

ANGUSGS

CED	BW	WW	YW	SC	MILK	MARB	RE	\$W	\$B	\$C
-1	3.6	91	160	1.53	23	0.16	0.38	83	134	231

- Dam Record: BWR 4@102, WWR 4@104
- ADG 3.93
- Good bull, good mother, and wild weaning and yearling epd's.

Simonson Steamboat 291 ★

17

REG: 20197709 DOB: 01/18/21 TATTOO: 291

S A V Renown 3439
T K Steamboat D307
 T K Tesa W592

Rito 707 of Ideal 3407 7075
 S A V Blackcap May 4136
 S A V Net Worth 4200
 T K Tesa R94
 Sandy Bar Advantage 43M
 Wilbar Ruby 955N
 HF Challenger 42N
 HF Tibbie 37N

Act BW	101
Adj WW/WWR	588 / 97
Adj YW	1318

ANGUSGS

CED	BW	WW	YW	SC	MILK	MARB	RE	\$W	\$B	\$C
-4	4.0	77	132	1.26	24	0.38	0.58	70	145	257

- Dam Record: BWR 7@107, WWR 7@99
- ADG 4.91
- Long spined bull.

Simonson Steamboat 161 ★

18

REG: 20197741 DOB: 02/14/21 TATTOO: 161

S A V Renown 3439
T K Steamboat D307
 T K Tesa W592

Rito 707 of Ideal 3407 7075
 S A V Blackcap May 4136
 S A V Net Worth 4200
 T K Tesa R94
 HF Tiger 5T
 HF Lucy 317Y
 Connealy Industry 5634
 SIMONSON Pride 7935

Act BW	90
Adj WW/WWR	601 / 99
Adj YW	1295

ANGUSGS

HF Who's That 7A
Simonson Pride 6931
 Simonson Pride 0302

CED	BW	WW	YW	SC	MILK	MARB	RE	\$W	\$B	\$C
0	3.6	89	148	1.05	25	0.19	0.52	85	120	216

- Dam Record: BWR 4@103, WWR 4@104
- ADG 4.67
- Who's That and Industry made a nice mix with Steamboat.



Simonson Steamboat 1281 ★

19

REG: 20197742 DOB: 02/19/21 TATTOO: 1281

S A V Renown 3439
T K Steamboat D307
 T K Tesa W592

Rito 707 of Ideal 3407 7075
 S A V Blackcap May 4136
 S A V Net Worth 4200
 T K Tesa R94
 HF Tiger 5T
 HF Lucy 317Y
 A A R High Five 8563
 Msar Blackcap 6551

Act BW	89
Adj WW/WWR	677 / 112
Adj YW	1317

ANGUSGS

HF Who's That 7A
Simonson Blackcap 7023
 Msar Blackcap 223

CED	BW	WW	YW	SC	MILK	MARB	RE	\$W	\$B	\$C
-2	3.6	86	144	1.63	25	0.42	0.67	82	151	245

- Dam Record: BWR 3@102, WWR 3@109
- ADG 4.31
- Maternal with a performance kick.

Reference Photo



Daughter of Steamboat
 Full sister to Simonson Loadout

TMinert Steamboat 271 ★

20

REG: 20192138 DOB: 01/18/21 TATTOO: 271

S A V Renown 3439
T K Steamboat D307
 T K Tesa W592

Rito 707 of Ideal 3407 7075
 S A V Blackcap May 4136
 S A V Net Worth 4200
 T K Tesa R94
 HF Tiger 5T
 HF Lucy 317Y
 Sitz Alliance 476P
 Msar Pride 6520

Act BW	81
Adj WW/WWR	695 / 115
Adj YW	1399

ANGUSGS

HF Who's That 7A
MSAR Pride 615
 Msar Pride 870

CED	BW	WW	YW	SC	MILK	MARB	RE	\$W	\$B	\$C
6	1.1	70	125	0.92	30	0.14	0.52	74	130	208

- Dam Record: BWR 3@95, WWR 3@107
- ADG 4.74
- Power bull!!!



T Minert Steamboat 221 ★

21

REG: 20197751 DOB: 01/17/21 TATTOO: 221

S A V Renown 3439
T K Steamboat D307
 T K Tesa W592

Rito 707 of Ideal 3407 7075
 S A V Blackcap May 4136
 S A V Net Worth 4200
 T K Tesa R94
 HF Tiger 5T
 HF Lucy 317Y
 A A R High Five 8563
 Msar G D Blackcap 591

Act BW	90
Adj WW/WWR	662 / 109
Adj YW	1435

ANGUSGS

HF Who's That 7A
MSAR GD Blackcap 131
 Msar GD Blackcap 131

CED	BW	WW	YW	SC	MILK	MARB	RE	\$W	\$B	\$C
2	3.1	78	135	0.91	24	0.39	0.47	74	144	256

- Dam Record: BWR 4@98, WWR 4@107
- ADG 5.21
- Power Bull!!!!



Shaina, Charlie and Jaylee

Reference Sire

Circle L Gus #17993084
S Chisum 6175 x HARB Pendleton 765 J H



CED	BW	WW	YW	SC	MILK	MARB	RE	\$W	\$B	\$C
14	-1.1	63	104	0.61	18	0.21	0.64	67	148	298

Gus is a heifer bull that consistently sires calves with a big top. Daughters calving this year have beautiful udders, plenty of rib and great disposition.



22 **Simonson Gus 251** ★★★
 REG: 20192137 DOB: 01/18/21 TATTOO: 251

S Chisum 6175	S Alliance 3313	Act BW
Circle L Gus	S Gloria 464	82
Circle L PRIDE X097	HARB Pendleton 765 J H	Adj WW / WWR
	Circle L Pride 38T	714 / 118
	S Summit 4604	Adj YW
	M Diamond Summit 466	1413
Simonson Blackcap 9158	M Diamond Emma E 543	ANGUSGS
Msar Blackcap 758	Sitz Top Seed 539X	
	Msar Blackcap 4330	

CED	BW	WW	YW	SC	MILK	MARB	RE	\$W	\$B	\$C
9	0.4	73	122	0.70	24	0.02	0.48	79	132	247

- Dam Record: BWR 1@103, WWR 1@118
- ADG 4.71
- One of the top heifer bulls in the sale. Smooth fronted bull with well-balanced numbers. His ratios are right with the Steamboat calves.

23 **Simonson Gus 591** ★★
 REG: 20197745 DOB: 01/24/21 TATTOO: 591

S Chisum 6175	S Alliance 3313	Act BW
Circle L Gus	S Gloria 464	86
Circle L PRIDE X097	HARB Pendleton 765 J H	Adj WW / WWR
	Circle L Pride 38T	632 / 104
	S A V Renown 3439	Adj YW
	T K Steamboat D307	1285
Simonson GD Blackcap 9189	T K Tesa W592	ANGUSGS
Msar G D Blackcap 300	Connealy Answer 71	
	Msar G D Blackcap 800	

CED	BW	WW	YW	SC	MILK	MARB	RE	\$W	\$B	\$C
4	2.8	72	120	0.80	24	0.20	0.66	70	133	270

- Dam Record: BWR 1@108, WWR 1@104
- ADG 4.40
- Good calf out a Steamboat daughter.



LOT 24

24 **Simonson Gus 391** ★★★
 REG: 20197746 DOB: 01/21/21 TATTOO: 391

S Chisum 6175	S Alliance 3313	Act BW
Circle L Gus	S Gloria 464	83
Circle L PRIDE X097	HARB Pendleton 765 J H	Adj WW/WWR
	Circle L Pride 38T	627 / 104
	Connealy Consensus	Adj YW
K C F Bennett Fortress	Thomas Patricia 9705	1382
Simonson GD Blackcap 9215	Barstow Cash	ANGUSGS
Msar GD Blackcap 714	Msar GD Blackcap 8745	

CED	BW	WW	YW	SC	MILK	MARB	RE	\$W	\$B	\$C
12	-0.4	73	128	1.10	20	0.30	0.70	72	134	246

- Dam Record: BWR 1@105, WWR 1@104
- ADG 5.09
- Good heifer bull with nice performance records.

26 **Simonson Gus 781** ★★★
 REG: 20197744 DOB: 01/29/21 TATTOO: 781

S Chisum 6175	S Alliance 3313	Act BW
Circle L Gus	S Gloria 464	82
Circle L PRIDE X097	HARB Pendleton 765 J H	Adj WW/WWR
	Circle L Pride 38T	602 / 100
	HF Tiger 5T	Adj YW
HF Who's That 7A	HF Lucy 317Y	1199
Simonson Lady Eston 9182	Sitz Alliance 476P	ANGUSGS
Msar Lady Eston 682	Msar Lady Eston 446	

CED	BW	WW	YW	SC	MILK	MARB	RE	\$W	\$B	\$C
4	1.2	58	100	1.00	22	0.43	0.36	61	113	223

- Dam Record: BWR 1@103, WWR 1@100
- ADG 4.02
- Good heifer bull.

25 **Simonson Gus 1751** ★★★
 REG: 20247758 DOB: 01/25/21 TATTOO: 1751

S Chisum 6175	S Alliance 3313	Act BW
Circle L Gus	S Gloria 464	81
Circle L PRIDE X097	HARB Pendleton 765 J H	Adj WW/WWR
	Circle L Pride 38T	633 / 105
	Barstow Cash	Adj YW
Connealy Cash 941C	Black Ceena of Conanga 941C	1225
Simonson Pride 9201	Sitz Top Seed 539X	ANGUSGS
Msra Pride 675	Msar Pride 075	

CED	BW	WW	YW	SC	MILK	MARB	RE	\$W	\$B	\$C
9	0.6	64	111		23			62		

- Dam Record: BWR 1@102, WWR 1@105
- ADG 3.79
- Good heifer bull.

27 **Simonson Gus 521** ★★★
 REG: 20231601 DOB: 01/23/21 TATTOO: 521

S Chisum 6175	S Alliance 3313	Act BW
Circle L Gus	S Gloria 464	75
Circle L PRIDE X097	HARB Pendleton 765 J H	Adj WW/WWR
	Circle L Pride 38T	544 / 90
	Rito 707 of Ideal 3407 7075	Adj YW
S A V Renown 3439	S A V Blackcap May 4136	1040
Simonson Pride 9119	Sitz Top Seed 539X	ANGUSGS
Msar Pride 319	Msar Pride 819	

CED	BW	WW	YW	SC	MILK	MARB	RE	\$W	\$B	\$C
11	-0.4	58	106	0.90	21	0.04	0.59	56	117	243

- Dam Record: BWR 1@95, WWR 1@90
- ADG 3.34
- Heifer bull.

28 REG: 20197731 DOB: 01/23/21 TATTOO: 511

S Alliance 3313
S Gloria 464
HARB Pendleton 765 J H
Circle L Pride 38T
LD Capitalist 316
MCATL Blackbird 831-1378
Connealy Arsenal 2174
Msar Blackcap 5431

Act BW
85
Adj WW / WWR
554 / 92
Adj YW
1036

ANGUSGS

CED	BW	WW	YW	SC	MILK	MARB	RE	\$W	\$B	\$C
10	1.0	62	99	0.73	27	0.29	0.78	77	128	266

- Dam Record: BWR 1@107, WWR 1@92
- ADG 3.24

31 REG: 20197726 DOB: 01/24/21 TATTOO: 531

S Alliance 3313
S Gloria 464
HARB Pendleton 765 J H
Circle L Pride 38T
Connealy Consensus
Thomas Patricia 9705
Connealy Cash 941C
Msar Pride 530

Act BW
72
Adj WW / WWR
547 / 90
Adj YW
1085

ANGUSGS

CED	BW	WW	YW	SC	MILK	MARB	RE	\$W	\$B	\$C
13	-1.8	62	104	0.60	16	0.35	0.48	62	130	241

- Dam Record: BWR 1@92, WWR 1@90
- ADG 3.62
- Heifer bull.

29 REG: 20197730 DOB: 02/02/21 TATTOO: 881

S Alliance 3313
S Gloria 464
HARB Pendleton 765 J H
Circle L Pride 38T
Rito 707 of Ideal 3407 7075
S A V Blackcap May 4136
Sitz Top Seed 539X
Msar Pride 1059

Act BW
85
Adj WW / WWR
610 / 101
Adj YW
1234

ANGUSGS

CED	BW	WW	YW	SC	MILK	MARB	RE	\$W	\$B	\$C
11	-1.5	61	102	0.66	26	0.15	0.75	75	119	259

- Dam Record: BWR 1@107, WWR 1@101
- ADG 4.21
- Good heifer bull with good performance numbers.

32 REG: 20197725 DOB: 01/19/21 TATTOO: 311

S Alliance 3313
S Gloria 464
HARB Pendleton 765 J H
Circle L Pride 38T
LD Capitalist 316
MCATL Blackbird 831-1378
Ellingson Roughrider 4202
Msar Lady Eston 326

Act BW
72
Adj WW / WWR
587 / 97
Adj YW
1117

ANGUSGS

CED	BW	WW	YW	SC	MILK	MARB	RE	\$W	\$B	\$C
12	-1.6	64	98	0.87	33	0.60	0.65	91	140	291

- Dam Record: BWR 1@92, WWR 1@97
- ADG 3.57
- Heifer bull.

30 REG: 20197729 DOB: 01/18/21 TATTOO: 261

S Alliance 3313
S Gloria 464
HARB Pendleton 765 J H
Circle L Pride 38T
S A V Seedstock 4838
Queen DK 041
HF Tiger 5T
Msar Blackcap 170

Act BW
84
Adj WW / WWR
583 / 96
Adj YW
1223

ANGUSGS

CED	BW	WW	YW	SC	MILK	MARB	RE	\$W	\$B	\$C
8	0.0	55	85	1.52	27	0.22	0.23	70	99	221

- Dam Record: BWR 1@106, WWR 1@96
- ADG 4.31
- Heifer bull.

33 REG: 20197724 DOB: 01/27/21 TATTOO: 681

S Alliance 3313
S Gloria 464
HARB Pendleton 765 J H
Circle L Pride 38T
Barstow Cash
Black Ceena of Conanga 941C
A A R High Five 8563
Msar Pride 121

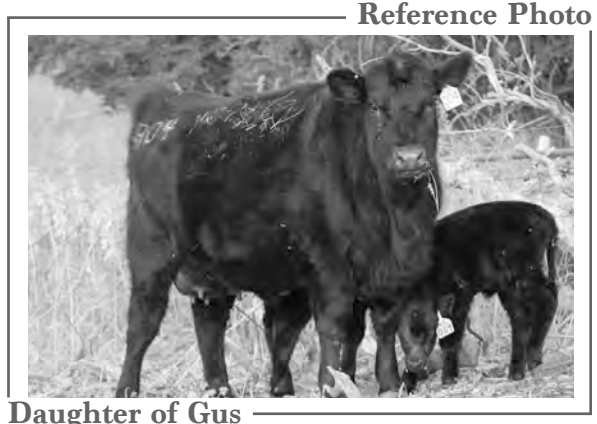
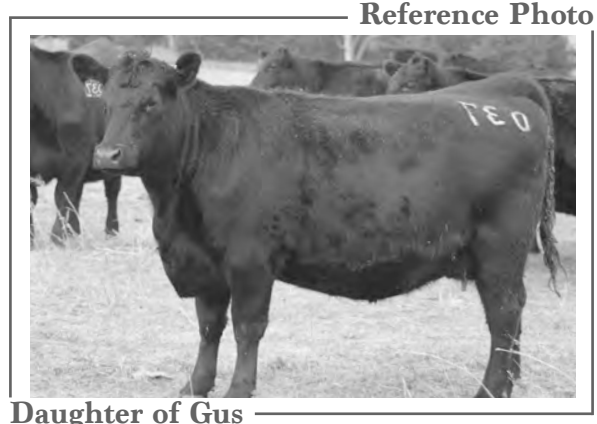
Act BW
83
Adj WW / WWR
619 / 102
Adj YW
1208

ANGUSGS

CED	BW	WW	YW	SC	MILK	MARB	RE	\$W	\$B	\$C
10	-0.2	70	109	0.16	23	0.20	0.85	82	130	282

- Dam Record: BWR 1@105, WWR 1@102
- ADG 3.97
- Heifer bull.

There are several excellent choices of heifer bulls being offered this year!



Simonson Gus 451

★★★

34

REG: 20197723 DOB: 01/23/21 TATTOO: 451

S Chisum 6175
Circle L Gus
Circle L PRIDE X097

S Alliance 3313
S Gloria 464
HARB Pendleton 765 J H
Circle L Pride 38T
Rito 707 of Ideal 3407 7075
S A V Blackcap May 4136
MSAR Highball
Simonson GD Blackcap 1424

Act BW	77
Adj WW/WWR	632 / 104
Adj YW	1224

ANGUSGS

CED	BW	WW	YW	SC	MILK	MARB	RE	\$W	\$B	\$C
11	-1.1	70	112	-0.10	15	0.26	0.46	72	115	240

- Dam Record: BWR 1@98, WWR 1@104
- ADG 3.98
- Good performing heifer bull. Bull has a little white in his eye from pinkeye.



LOT 37

Simonson Gus 971

★★★

35

REG: 20197722 DOB: 02/04/21 TATTOO: 971

S Chisum 6175
Circle L Gus
Circle L PRIDE X097

S Alliance 3313
S Gloria 464
HARB Pendleton 765 J H
Circle L Pride 38T
S A V Renown 3439
T K Tesa W592
MSAR Forte 6776
Simonson Blackcap 2413

Act BW	81
Adj WW/WWR	574 / 95
Adj YW	1120

ANGUSGS

CED	BW	WW	YW	SC	MILK	MARB	RE	\$W	\$B	\$C
4	-1.0	56	94	0.33	20	0.20	0.30	56	105	209

- Dam Record: BWR 1@102, WWR 1@95
- ADG 3.67
- Heifer bull.

Simonson Gus 1731

★★★

37

REG: 20236072 DOB: 01/28/21 TATTOO: 1731

S Chisum 6175
Circle L Gus
Circle L PRIDE X097

S Alliance 3313
S Gloria 464
HARB Pendleton 765 J H
Circle L Pride 38T
Barstow Cash
Black Ceena of Conanga 941C
Sitz Top Seed 539X
Msar Pride 429

Act BW	84
Adj WW/WWR	713 / 118
Adj YW	1417

Connealy Cash 941C
Simonson Pride 9301
Simonson Pride 6544

CED	BW	WW	YW	SC	MILK	MARB	RE	\$W	\$B	\$C
7	1.4	74	126		25			73		

- Dam Record: BWR 1@106, WWR 1@118
- ADG 4.74
- Performance heifer bull.



LOT 36

T Minert Gus 1781

★

38

REG: 20197748 DOB: 01/28/21 TATTOO: 1781

S Chisum 6175
Circle L Gus
Circle L PRIDE X097

S Alliance 3313
S Gloria 464
HARB Pendleton 765 J H
Circle L Pride 38T
S A V Renown 3439
T K Tesa W592
S A V Pioneer 7301
Msar Queen 023

Act BW	97
Adj WW/WWR	656 / 108
Adj YW	1235

T K Steamboat D307
T Msar Queen 923
Msar Queen 323

CED	BW	WW	YW	SC	MILK	MARB	RE	\$W	\$B	\$C
2	4.3	71	116	1.92	22	0.21	0.74	65	133	262

- Dam Record: BWR 1@121, WWR 1@108
- ADG 4.34

ANGUSGS

Simonson Gus 351

★★

36

REG: 20192135 DOB: 01/20/21 TATTOO: 351

S Chisum 6175
Circle L Gus
Circle L PRIDE X097

S Alliance 3313
S Gloria 464
HARB Pendleton 765 J H
Circle L Pride 38T
GDAR Game Day 449
S Dina 4116
Sitz Traveler 8180
M A R G D Blackcap 491

Act BW	88
Adj WW/WWR	681 / 113
Adj YW	1252

ANGUSGS

CED	BW	WW	YW	SC	MILK	MARB	RE	\$W	\$B	\$C
5	1.3	62	113	1.51	22	0.09	0.86	66	140	283

- Dam Record: BWR 8@102, WWR 8@103
- ADG 3.84
- Good performing bull. Pushing the limits on being a heifer bull.

T Minert Gus 341

★★★

39

REG: 20201288 DOB: 01/20/21 TATTOO: 341

S Chisum 6175
Circle L Gus
Circle L PRIDE X097

S Alliance 3313
S Gloria 464
HARB Pendleton 765 J H
Circle L Pride 38T
S A V Registry 2831
S A V Blackcap May 4136
S Elevate 9165
MSAR Queen Eva 599

Act BW	77
Adj WW/WWR	625 / 103
Adj YW	1211

S A V Seedstock 4838
T Msar Queen 999
Msar Queen Eva 299

CED	BW	WW	YW	SC	MILK	MARB	RE	\$W	\$B	\$C
13	0.2	66	114	0.23	30	0.57	0.42	81	146	274

- Dam Record: BWR 2@99, WWR 2@102
- ADG 3.95
- Heifer bull.

ANGUSGS



LOT 40

ZA Gus 491

★★★

40 REG: 20247760 DOB: 01/23/21 TATTOO: 491

S Chisum 6175	S Alliance 3313	Act BW
Circle L Gus	S Gloria 464	84
Circle L PRIDE X097	HARB Pendleton 765 J H	Adj WW/WWR
	Circle L Pride 38T	636 / 105
	Connealy Consensus	Adj YW
	Thomas Patricia 9705	1258
K C F Bennett Fortress	Msar Cash 2525	
Simonson Lady Eston 967	Msar Pride 4343	
Msar Pride 767		

ANGUSGS

CED	BW	WW	YW	SC	MILK	MARB	RE	\$W	\$B	\$C
13	-1.3	65	99	-0.57	22	0.36	0.62	78	123	259

- Dam Record: BWR 1@106, WWR 1@105
- ADG 4.19
- Smooth made and complete heifer bull.

TMinert Gus 421

★★★

42 REG: 20192139 DOB: 01/22/21 TATTOO: 421

S Chisum 6175	S Alliance 3313	Act BW
Circle L Gus	S Gloria 464	79
Circle L PRIDE X097	HARB Pendleton 765 J H	Adj WW/WWR
	Circle L Pride 38T	671 / 111
	S A V Renown 3439	Adj YW
	T K Tesa W592	1316
T K Steamboat D307	A A R High Five 8563	
TMsar Queen Eva 9177	Msar Queen Eva 898	
Msar Queen Eva 198		

ANGUSGS

CED	BW	WW	YW	SC	MILK	MARB	RE	\$W	\$B	\$C
9	0.2	69	109	1.55	26	0.49	0.23	84	115	249

- Dam Record: BWR 1@100, WWR 1@111
- ADG 4.34
- Good heifer bull with nice ratios.

J Simonson Gus 771

★★★

41 REG: 20197747 DOB: 01/29/21 TATTOO: 771

S Chisum 6175	S Alliance 3313	Act BW
Circle L Gus	S Gloria 464	75
Circle L PRIDE X097	HARB Pendleton 765 J H	Adj WW/WWR
	Circle L Pride 38T	665 / 110
	LD Capitalist 316	Adj YW
	MCATL Blackbird 831-1378	1276
Musgrave 316 Stunner	A A R High Five 8563	
Jaylee's GD Blackcap 9190	Msar Blackcap 990	
Jaylee Blackcap 290		

ANGUSGS

CED	BW	WW	YW	SC	MILK	MARB	RE	\$W	\$B	\$C
11	-0.3	69	111	0.36	24	0.31	0.60	75	128	250

- Dam Record: BWR 1@95, WWR 1@110
- ADG 4.12
- Good heifer bull with performance.

Simonson Gus 1671

★★★

43 REG: PENDING DOB: 01/21/21 TATTOO: 1671

S Chisum 6175	S Alliance 3313	Act BW
Circle L Gus	S Gloria 464	79
Circle L PRIDE X097	HARB Pendleton 765 J H	Adj WW/WWR
	Circle L Pride 38T	656 / 108
	S A V Renown 3439	Adj YW
	T K Tesa W592	1317
T K Steamboat D307	Sitz Top Seed 539X	
Simonson Pride 9159	Msar Pride 179	
Msar Pride 359		

ANGUSGS

CED	BW	WW	YW	SC	MILK	MARB	RE	\$W	\$B	\$C

- Dam Record: BWR 1@100, WWR 1@108
- ADG 4.45
- Registration and EPDs available sale day.



Reference Sire

U-2 Coalition 206C #18626847

HF Syndicate 213Z x Young Dale Xclusive 25X

CED	BW	WW	YW	SC	MILK	MARB	RE	\$W	\$B	\$C
8	0.9	59	117	0.82	24	0.36	0.57	55	140	236

The Coalition cattle are very feminine, long big hip and the daughters have everything you would want in a cow.



LOT 44

Simonson Coalition 1001 ★★★

44

REG: 20231983 DOB: 02/05/21 TATTOO: 1001

HF Syndicate 213Z
U-2 Coalition 206C
U2 Erelite 109Z

Connealy Consensus 7229
HF Miss Blackcap 27R
Young Dale Xclusive 25X
U-2 Erelite 1X

Act BW	85
Adj WW / WWR	597 / 99
Adj YW	1266

HF Who's That 7A
Msar GD Blackcap 531
Msar GD Blackcap 331

HF Tiger 5T
HF Lucy 317Y
Sitz Top Seed 539X
Msar GD Blackcap 131

ANGUSGS

CED	BW	WW	YW	SC	MILK	MARB	RE	\$W	\$B	\$C
11	1.2	67	117	0.39	25	0.07	0.46	70	122	236

- Dam Record: BWR 5@103, WWR 5@107
- ADG 4.50
- Good low birth weight bull with a lot of middle and thickness. His daughters should be outstanding.

Simonson Coalition 1931 ★★★

45

REG: 20231986 DOB: 02/04/21 TATTOO: 1931

HF Syndicate 213Z
U-2 Coalition 206C
U2 Erelite 109Z

Connealy Consensus 7229
HF Miss Blackcap 27R
Young Dale Xclusive 25X
U-2 Erelite 1X

Act BW	86
Adj WW / WWR	626 / 103
Adj YW	1296

HF Tiger 5T
Msar Edella 450
Msar Edella 650

HF Kodiak 5R
HF Echo 84R
S A V 8180 Traveler 004
Minerts Edella 664

ANGUSGS

CED	BW	WW	YW	SC	MILK	MARB	RE	\$W	\$B	\$C
15	-1.8	61	111	1.70	31	0.35	0.44	76	123	239

- Dam Record: BWR 4@101, WWR 4@99
- ADG 4.05
- Great heifer bull with good performance.

46 Simonsen Coalition 901 ★★

REG: 20231991 DOB: 02/02/21 TATTOO: 901

Act BW	86
Adj WW/WWR	544 / 90
Adj YW	1181

ANGUSGS

CED	BW	WW	YW	SC	MILK	MARB	RE	\$W	\$B	\$C
5	1.9	60	105	1.10	24	0.12	0.31	59	93	191

- Dam Record: BWR 7@98, WWR 7@95
- ADG 4.29

50 Simonsen Coalition 481 ★★★

REG: 20231988 DOB: 01/23/21 TATTOO: 481

Act BW	78
Adj WW/WWR	564 / 93
Adj YW	1132

ANGUSGS

CED	BW	WW	YW	SC	MILK	MARB	RE	\$W	\$B	\$C
12	-0.1	51	91	1.07	24	0.27	0.35	54	107	207

- Dam Record: BWR 6@97, WWR 6@99
- ADG 3.83
- Heifer bull.

47 Simonsen Coalition 321 ★★★

REG: 20231980 DOB: 01/19/21 TATTOO: 321

Act BW	86
Adj WW/WWR	591 / 98
Adj YW	1197

ANGUSGS

CED	BW	WW	YW	SC	MILK	MARB	RE	\$W	\$B	\$C
9	0.4	53	96	0.43	27	0.51	0.09	60	109	215

- Dam Record: BWR 5@96, WWR 5@105
- ADG 4.09
- Long smooth made heifer bull.

51 Simonsen Coalition 1881 ★★★

REG: 20197735 DOB: 02/22/21 TATTOO: 1881

Act BW	85
Adj WW/WWR	632 / 104
Adj YW	1242

ANGUSGS

CED	BW	WW	YW	SC	MILK	MARB	RE	\$W	\$B	\$C
5	1.0	55	98	1.09	28	0.05	0.73	59	115	199

- Dam Record: BWR 6@100, WWR 6@99
- ADG 3.88
- Heifer bull with a good weaning ratio.

48 Simonsen Coalition 891 ★★★

REG: 20231921 DOB: 02/02/21 TATTOO: 891

Act BW	82
Adj WW/WWR	593 / 98
Adj YW	1140

ANGUSGS

CED	BW	WW	YW	SC	MILK	MARB	RE	\$W	\$B	\$C
12	0.3	75	136	1.31	29	0.68	0.79	79	144	238

- Dam Record: BWR 2@95, WWR 2@106
- ADG 3.69
- Heifer bull.

52 Simonsen Coalition 361 ★★★

REG: 20197739 DOB: 01/21/21 TATTOO: 361

Act BW	81
Adj WW/WWR	576 / 95
Adj YW	1157

ANGUSGS

CED	BW	WW	YW	SC	MILK	MARB	RE	\$W	\$B	\$C
8	0.8	64	123	0.49	21	0.38	0.30	59	131	226

- Dam Record: BWR 3@93, WWR 3@103
- ADG 3.91
- Heifer bull.

49 Simonsen Coalition 661 ★★★

REG: 20197732 DOB: 01/28/21 TATTOO: 661

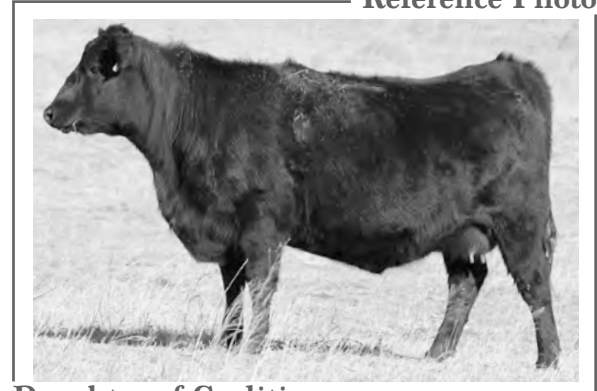
Act BW	78
Adj WW/WWR	544 / 90
Adj YW	1181

ANGUSGS

CED	BW	WW	YW	SC	MILK	MARB	RE	\$W	\$B	\$C
11	-0.5	51	98	0.49	27	0.35	0.38	53	124	210

- Dam Record: BWR 9@98, WWR 9@102
- ADG 4.29
- Long heifer bull.

Reference Photo



Daughter of Coalition



Reference Sire

Bowman Unanimous 805 #19535424
Vision Unanimous 1418 x VAR Rocky 80029

CED	BW	WW	YW	SC	MILK	MARB	RE	\$W	\$B	\$C
-1	3.1	73	126	0.77	22	0.62	0.60	67	139	229

*Boiler's offspring are great footed, soft made with lots of rib and thickness.
 Excited for the future of his females.*



LOT 53

Simonson Boiler 441 ★

53

REG: 20192133 DOB: 01/23/21 TATTOO: 441

Vision Unanimous 1418
Bowman Unanimous 805
 Bowman Fanny A63 x N28

Visiontopline Royal Stockman
 Vision Edella 665
 VAR Rocky 80029
 AB Fanny 1133
 HF Tiger 5T
 HF Lucy 317Y
 A A R High Five 8563
 Simonson Pride 1440

Act BW	87
Adj WW/WWR	698 / 115
Adj YW	1287

ANGUSGS

CED	BW	WW	YW	SC	MILK	MARB	RE	\$W	\$B	\$C
2	2.9	72	120	0.38	18	0.37	0.46	62	122	220

- Dam Record: BWR 2@102, WWR 2@109
- ADG 3.97
- Thick, moderate frame bull with good performance numbers.

Simonson Boiler 1961 ★

54

REG: 20236654 DOB: 02/24/21 TATTOO: 1961

Vision Unanimous 1418
Bowman Unanimous 805
 Bowman Fanny A63 x N28

Visiontopline Royal Stockman
 Vision Edella 665
 VAR Rocky 80029
 AB Fanny 1133
 HF Tiger 5T
 HF Lucy 317Y
 S A V Final Answer 0035
 Msar Lady Eston 949

Act BW	86
Adj WW/WWR	747 / 123
Adj YW	1390

ANGUSGS

CED	BW	WW	YW	SC	MILK	MARB	RE	\$W	\$B	\$C
-2	2.8	88	148	0.99	26	0.37	0.55	85	138	233

- Dam Record: BWR 2@99, WWR 2@110
- ADG 4.90
- This bull had second best weaning ratio.

ZA Boiler 1421

★

55 REG: 20236658 DOB: 02/23/21 TATTOO: 1421

Vision Unanimous 1418 Bowman Unanimous 805 Bowman Fanny A63 x N28	Visiontopline Royal Stockman Vision Edella 665 VAR Rocky 80029 AB Fanny 1133 O C C Paxton 730P Bohi Abigale 6014 HF Who's That 7A Msar Pride 881	Act BW 81 Adj WW/WWR 605 / 100 Adj YW 1242
--	---	--

Coleman Charlo 0256
Msra Pride 848
MSAR Pride 647

CED	BW	WW	YW	SC	MILK	MARB	RE	\$W	\$B	\$C
4	2.5	73	130	1.12	28	0.37	0.29	76	122	210

ANGUSGS

- Dam Record: BWR 2@98, WWR 2@104
- ADG 4.29

Simonson Boiler 281

★

59 REG: 20236656 DOB: 01/18/21 TATTOO: 281

Vision Unanimous 1418 Bowman Unanimous 805 Bowman Fanny A63 x N28	Visiontopline Royal Stockman Vision Edella 665 VAR Rocky 80029 AB Fanny 1133 Connealy Freightliner Eilera of Conanga 2583 Connealy Front Page 0228 Msar Pride 189	Act BW 99 Adj WW/WWR 757 / 125 Adj YW 1368
--	--	--

Connealy Industry 5634
Msar Pride 112
Msar Pride 3249

CED	BW	WW	YW	SC	MILK	MARB	RE	\$W	\$B	\$C
3	4.0	81	127	0.61	21	0.26	0.51	78	97	217

ANGUSGS

- Dam Record: BWR 8@107, WWR 9@101
- ADG 4.12
- He is a tank. Heaviest weaning ratio bull.

Simonson Boiler 1801

★

56 REG: 20243073 DOB: 01/05/21 TATTOO: 1801

Vision Unanimous 1418 Bowman Unanimous 805 Bowman Fanny A63 x N28	Visiontopline Royal Stockman Vision Edella 665 VAR Rocky 80029 AB Fanny 1133 HA Outside 3008 T E F Jet Princess 714 HF Who's That 7A Simonson Lady Eston 349	Act BW 86 Adj WW/WWR 674 / 100 Adj YW 1350
--	---	--

TEF Outside 514
Shaina Lady Eston 836
Shaina Lady Eston 6903

CED	BW	WW	YW	SC	MILK	MARB	RE	\$W	\$B	\$C
4	2.1	70	130	1.00	27	0.51	0.53	69	148	242

ANGUSGS

- Dam Record: BWR 1@100, WWR 1@100
- ADG 5.42
- Bull is a little older.

Simonson Boiler 1031

★

60 REG: 20236662 DOB: 02/07/21 TATTOO: 1031

Vision Unanimous 1418 Bowman Unanimous 805 Bowman Fanny A63 x N28	Visiontopline Royal Stockman Vision Edella 665 VAR Rocky 80029 AB Fanny 1133 Barstow Cash Barstow Dolly WA Y100 Connealy Industry 5634 Simonson Pride 4603	Act BW 83 Adj WW/WWR 585 / 97 Adj YW 1302
--	---	---

Barstow Cashman A24
Simonson Pride 867
Simonson Pride 8067

CED	BW	WW	YW	SC	MILK	MARB	RE	\$W	\$B	\$C
1	2.5	68	121	1.41	25	0.52	0.35	66	120	222

ANGUSGS

- Dam Record: BWR 2@103, WWR 2@101
- ADG 4.83
- Smoother made bull that gained well.

Simonson Boiler 721

★

57 REG: 20236650 DOB: 01/29/21 TATTOO: 721

Vision Unanimous 1418 Bowman Unanimous 805 Bowman Fanny A63 x N28	Visiontopline Royal Stockman Vision Edella 665 VAR Rocky 80029 AB Fanny 1133 Connealy Conquest Rubista of Conanga 2304 A A R High Five 8563 Msar Forever Lady 525	Act BW 92 Adj WW/WWR 647 / 107 Adj YW 1290
--	--	--

Connealy Expedition 2304
Simonson Forever Lady 825
Msar Forever Lady 025

CED	BW	WW	YW	SC	MILK	MARB	RE	\$W	\$B	\$C
-10	5.5	87	138	0.97	21	0.13	0.78	75	117	203

ANGUSGS

- Dam Record: BWR 2@104, WWR 2@102
- ADG 4.33
- Good ratios and plenty of rib.



LOT 61

Simonson Boiler 211

★

58 REG: 20236663 DOB: 01/17/21 TATTOO: 211

Vision Unanimous 1418 Bowman Unanimous 805 Bowman Fanny A63 x N28	Visiontopline Royal Stockman Vision Edella 665 VAR Rocky 80029 AB Fanny 1133 Rito 707 of Ideal 3407 7075 S A V Blackcap May 4136 Connealy Industry 5634 Msar Pride 0462	Act BW 92 Adj WW/WWR 580 / 96 Adj YW 1159
--	--	---

S A V Renown 3439
Simonson Pride 815
Msar Pride 912

CED	BW	WW	YW	SC	MILK	MARB	RE	\$W	\$B	\$C
-3	3.9	73	124	0.00	20	0.43	0.37	62	104	175

ANGUSGS

- Dam Record: BWR 2@107, WWR 2@99
- ADG 3.90
- Moderate deep ribbed bull.

Simonson Boiler 811

★

61 REG: 20236653 DOB: 01/30/21 TATTOO: 811

Vision Unanimous 1418 Bowman Unanimous 805 Bowman Fanny A63 x N28	Visiontopline Royal Stockman Vision Edella 665 VAR Rocky 80029 AB Fanny 1133 Rito 707 of Ideal 3407 7075 S A V Blackcap May 4136 MSAR Forte 6776 Simonson Blackcap 2413	Act BW 88 Adj WW/WWR 660 / 109 Adj YW 1207
--	--	--

S A V Renown 3439
Simonson Blackcap 879
Simonson Blackcap 1427

CED	BW	WW	YW	SC	MILK	MARB	RE	\$W	\$B	\$C
-4	5.0	73	123	0.34	26	0.48	0.71	67	151	258

ANGUSGS

- Dam Record: BWR 2@100, WWR 2@107
- ADG 3.69

Simonson Boiler 621

★

62 REG: 20236659 DOB: 01/25/21 TATTOO: 621

Vision Unanimous 1418 Bowman Unanimous 805 Bowman Fanny A63 x N28	Visiontopline Royal Stockman Vision Edella 665 VAR Rocky 80029 AB Fanny 1133 Barstow Cash Barstow Dolly WA Y100 HF Who's That 7A Simonson Pride 9200	Act BW 88 Adj WW/WWR 580 / 96 Adj YW 1276
--	---	---

ANGUSGS

CED	BW	WW	YW	SC	MILK	MARB	RE	\$W	\$B	\$C
2	3.2	72	131	0.76	29	0.43	0.52	71	133	228

- Dam Record: BWR 2@102, WWR 2@102
- ADG 4.69



Simonson Boiler 571

★

64 REG: 20236651 DOB: 01/24/21 TATTOO: 571

Vision Unanimous 1418 Bowman Unanimous 805 Bowman Fanny A63 x N28	Visiontopline Royal Stockman Vision Edella 665 VAR Rocky 80029 AB Fanny 1133 Rito 707 of Ideal 3407 7075 S A V Blackcap May 4136 Connealy Stimulus 8419 MSAR Blackcap 576	Act BW 86 Adj WW/WWR 569 / 94 Adj YW 1214
--	--	---

ANGUSGS

CED	BW	WW	YW	SC	MILK	MARB	RE	\$W	\$B	\$C
2	2.3	69	123	0.83	24	0.20	0.52	71	118	233

- Dam Record: BWR 2@100, WWR 2@100
- ADG 4.34



Simonson Boiler 1891

★

63 REG: 20236661 DOB: 01/21/21 TATTOO: 1891

Vision Unanimous 1418 Bowman Unanimous 805 Bowman Fanny A63 x N28	Visiontopline Royal Stockman Vision Edella 665 VAR Rocky 80029 AB Fanny 1133 Connealy Freightliner Eilera of Conanga 2583 Rito 616 of 4B20 6807 MSAR Edella 464	Act BW 89 Adj WW/WWR 646 / 107 Adj YW 1348
--	--	--

ANGUSGS

CED	BW	WW	YW	SC	MILK	MARB	RE	\$W	\$B	\$C
-3	3.9	75	132	1.10	15	0.21	0.70	55	127	195

- Dam Record: BWR 7@104, WWR 7@97
- ADG 4.79
- Stout smooth fronted bull.



Carrol Minert on sale day 2021

Simonson Boiler 801

★

66 REG: 20236657 DOB: 01/30/21 TATTOO: 801

Vision Unanimous 1418 Bowman Unanimous 805 Bowman Fanny A63 x N28	Visiontopline Royal Stockman Vision Edella 665 VAR Rocky 80029 AB Fanny 1133 Rito 707 of Ideal 3407 7075 S A V Blackcap May 4136 Msar Final Answer 2019 Simonson Edella 0327	Act BW 87 Adj WW/WWR 641 / 106 Adj YW 1291
--	---	--

ANGUSGS

CED	BW	WW	YW	SC	MILK	MARB	RE	\$W	\$B	\$C
-1	3.4	79	138	-0.18	24	0.72	0.11	74	116	214

- Dam Record: BWR 2@99, WWR 2@101
- ADG 4.38
- Smooth soft-made bull.

Simonson Boiler 1191

★

67 REG: 20236652 DOB: 02/15/21 TATTOO: 1191

Vision Unanimous 1418 Bowman Unanimous 805 Bowman Fanny A63 x N28	Visiontopline Royal Stockman Vision Edella 665 VAR Rocky 80029 AB Fanny 1133 LD Capitalist 316 MCATL Blackbird 831-1378 Connealy Industry 5634 Msar Pride 3249	Act BW 86 Adj WW/WWR 668 / 110 Adj YW 1287
--	---	--

ANGUSGS

CED	BW	WW	YW	SC	MILK	MARB	RE	\$W	\$B	\$C
1	3.6	75	121	0.83	32	0.53	0.65	80	124	209

- Dam Record: BWR 2@100, WWR 2@101
- ADG 4.17
- Good performance bull.



LOT 68

68 **JSimonson Boiler 331** ★
 REG: 20236664 DOB: 01/20/21 TATTOO: 331

Vision Unanimous 1418 Bowman Unanimous 805 Bowman Fanny A63 x N28 Connealy Expedition 2304 Jaylee Blackcap 889 Simonson Blackcap 9209	Visiontopline Royal Stockman Vision Edella 665 VAR Rocky 80029 AB Fanny 1133 Connealy Conquest Rubista of Conanga 2304 Msar Shaker 2307 Simonson Blackcap 5720	<table border="1"> <tr><td>Act BW</td></tr> <tr><td>90</td></tr> <tr><td>Adj. WW / WWR</td></tr> <tr><td>601 / 99</td></tr> <tr><td>Adj YW</td></tr> <tr><td>1270</td></tr> </table> ANGUSGS	Act BW	90	Adj. WW / WWR	601 / 99	Adj YW	1270
Act BW								
90								
Adj. WW / WWR								
601 / 99								
Adj YW								
1270								

CED	BW	WW	YW	SC	MILK	MARB	RE	\$W	\$B	\$C
3	2.2	75	136	1.62	22	0.41	0.44	70	129	233

- Dam Record: BWR 2@105, WWR 2@109
- ADG 4.50
- Soggy-made bull.

69 **Simonson Boiler 381** ★
 REG: 20236655 DOB: 01/21/21 TATTOO: 381

Vision Unanimous 1418 Bowman Unanimous 805 Bowman Fanny A63 x N28 HF Who's That 7A Shaina Edella 8156 Shaina Edella 2546	Visiontopline Royal Stockman Vision Edella 665 VAR Rocky 80029 AB Fanny 1133 HF Tiger 5T HF Lucy 317Y Msar Shaker 2307 SHAINA Edella 706	<table border="1"> <tr><td>Act BW</td></tr> <tr><td>98</td></tr> <tr><td>Adj. WW / WWR</td></tr> <tr><td>584 / 97</td></tr> <tr><td>Adj YW</td></tr> <tr><td>1194</td></tr> </table> ANGUSGS	Act BW	98	Adj. WW / WWR	584 / 97	Adj YW	1194
Act BW								
98								
Adj. WW / WWR								
584 / 97								
Adj YW								
1194								

CED	BW	WW	YW	SC	MILK	MARB	RE	\$W	\$B	\$C
-7	6.4	66	116	0.56	25	0.14	0.39	50	121	213

- Dam Record: BWR 2@107, WWR 2@97
- ADG 4.10
- Good maternal cow family.



Reference Sire

Circle L Stampede #19461684
 Circle L Gus x Musgrave Big Sky

CED	BW	WW	YW	SC	MILK	MARB	RE	\$W	\$B	\$C
4	1.8	68	128	0.80	21	0.07	0.93	63	147	254

Stampede is a Gus son purchased from Cory and Kari Lamey of Circle L Angus. I used him some AI on cows but mainly cleaned up heifers. I have high hopes for his females.



LOT 70

Simonson Stampede 961 ★★★

70 REG: 20246069 DOB: 01/24/21 TATTOO: 961

Circle L Gus Circle L Stampede Circle L Lucy 42D	S Chisum 6175 Circle L PRIDE X097 Musgrave Big Sky Circle L Lucy 053 HF Tiger 5T HF Lucy 317Y Connealy Industry 5634 M S A R Bluebird 1212	Act BW 87 Adj WW/WWR 616 / 102 Adj YW 1299
---	---	---

HF Who's That 7A
MSAR Bluebird 608
Msar Bluebird 808

CED	BW	WW	YW	SC	MILK	MARB	RE	SW	SB	SC
4	2.3	75	129	1.01	12	0.01	0.74	59	136	235

- Dam Record: BWR 3@105, WWR 3@104
- ADG 4.60
- This is a thick-made bull out of a cool Who's That daughter. Keep all of his daughters.



LOT 71

Simonson Stampede 671 ★

71 REG: PENDING DOB: 01/27/21 TATTOO: 671

Circle L Gus Circle L Stampede Circle L Lucy 42D	S Chisum 6175 Circle L PRIDE X097 Musgrave Big Sky Circle L Lucy 053 Musgrave Aviator KGM Enchantress 4054 S A V Final Answer 0035 Msar June 117	Act BW 96 Adj WW/WWR 714 / 118 Adj YW 1444
---	---	---

4M Ace 709
Simonson June 920
Msar June 020

CED	BW	WW	YW	SC	MILK	MARB	RE	SW	SB	SC

- Dam Record: BWR 1@120, WWR 1@118
- ADG 4.91
- Bigger framed bull with a 1444 adj yearling weight. Registration and EPDs available sale day.

Simonson Stampede 1171 ★★

72 REG: 20246067 DOB: 02/13/21 TATTOO: 1171

Circle L Gus Circle L Stampede Circle L Lucy 42D	S Chisum 6175 Circle L PRIDE X097 Musgrave Big Sky Circle L Lucy 053 S A V Seedstock 4838 Queen DK 041 A A R High Five 8563 Msar Lady Eston 046	Act BW 83 Adj WW/WWR 667 / 110 Adj YW 1299
---	--	---

Kraye Seedstock DK 768
Simonson Lady Eston 940
Msar Lady Eston 240

CED	BW	WW	YW	SC	MILK	MARB	RE	SW	SB	SC
7	1.6	78	134	0.95	22	0.20	0.62	77	122	224

- Dam Record: BWR 1@105, WWR 1@110
- ADG 4.26
- Low birth weight performance bull.

Siomonson Stampede 1211 ★★★

73 REG: 20246043 DOB: 02/16/21 TATTOO: 1211

Circle L Gus Circle L Stampede Circle L Lucy 42D	S Chisum 6175 Circle L PRIDE X097 Musgrave Big Sky Circle L Lucy 053 S A V Registry 2831 S A V Blackcap May 4136 B C Lookout 7024 Msar GD Blackcap 196	Act BW 72 Adj WW/WWR 606 / 100 Adj YW 1203
---	---	---

S A V Seedstock 4838
Simonson GD Blackcap 997
Msar GD Blackcap 197

CED	BW	WW	YW	SC	MILK	MARB	RE	SW	SB	SC
5	0.8	63	111	0.78	23	-0.30	0.71	65	95	201

- Dam Record: BWR 1@92, WWR 1@100
- ADG 4.02
- Heifer bull.

Simonson Stampede 1831 ★★

74 REG: 20246070 DOB: 02/05/21 TATTOO: 1831

Circle L Gus Circle L Stampede Circle L Lucy 42D	S Chisum 6175 Circle L PRIDE X097 Musgrave Big Sky Circle L Lucy 053 HF Tiger 5T HF Lucy 317Y A A R High Five 8563 Msar Pride 932	Act BW 95 Adj WW/WWR 568 / 94 Adj YW 1240
---	--	--

HF Who's That 7A
MSAR Pride 6545
Msar Pride 432

CED	BW	WW	YW	SC	MILK	MARB	RE	SW	SB	SC
4	1.9	67	115	0.29	24	0.57	0.49	66	152	260

- Dam Record: BWR 4@107, WWR 4@110
- ADG 4.52

Simonson Stampede 1851 ★★★

75 REG: 20246047 DOB: 02/07/21 TATTOO: 1851

Circle L Gus Circle L Stampede Circle L Lucy 42D	S Chisum 6175 Circle L PRIDE X097 Musgrave Big Sky Circle L Lucy 053 S Summit 4604 M Diamond Emma E 543 HF Who's That 7A Simonson Blackcap 9190	Act BW 73 Adj WW/WWR 563 / 93 Adj YW 1160
---	--	--

M Diamond Summit 466
Simonson GD Blackcap 9138
Simonson Blackcap 5838

CED	BW	WW	YW	SC	MILK	MARB	RE	SW	SB	SC
9	-0.6	44	87	1.66	34	0.38	0.85	59	131	236

- Dam Record: BWR 1@93, WWR 1@93
- ADG 4.31
- Heifer bull.

There are several excellent choices of heifer bulls being offered this year!

77 REG: 20247200 DOB: 01/24/21 TATTOO: 601

S Chisum 6175
Circle L Gus
Circle L PRIDE X097
Musgrave Big Sky
Circle L Lucy 053
Barstow Cash
Connealy Cash 941C
Black Ceena of Conanga 941C
HF Who's That 7A
Msra Blackcap 9187
MSAR GD Blackcap 131

Act BW	84
Adj WW/WWR	643 / 106
Adj YW	1350

ANGUSGS

CED	BW	WW	YW	SC	MILK	MARB	RE	\$W	\$B	\$C
8	2.0	81	145	1.18	20	0.50	0.64	75	158	283

- Dam Record: BWR 1@106, WWR 1@106
- ADG 4.76
- Solid performing bull.

78 REG: PENDING DOB: 02/08/21 TATTOO: 1061

Connealy Cash 941C
Simonson CCash 2329
Msar Blackcap 418

Barstow Cash
Black Ceena of Conanga 941C
HF Done Right 32Y
MSAR Blackcap 718
S A V Renown 3439
T K Tesa W592
Barstow Cash
Msar Lady Eston 126

Act BW	79
Adj WW/WWR	651 / 108
Adj YW	1250

ANGUSGS

CED	BW	WW	YW	SC	MILK	MARB	RE	\$W	\$B	\$C

- Dam Record: BWR 1@100, WWR 1@108
- ADG 4.28
- Good Heifer bull. Registration and EPDs available sale day.



Reference Sire

Kraye Seedstock DK 768 #18971873
S A V Seedstock 4838 x S A V Final Answer 0035

CED	BW	WW	YW	SC	MILK	MARB	RE	\$W	\$B	\$C
7	1.4	56	98	1.36	21	0.09	0.34	53	97	204

Kraye Seedstock progeny are good, complete cattle with great eye appeal and thickness. The cattle have great maternal features every cowman strives to find.



80 REG: 20197705 DOB: 02/24/21 TATTOO: 1461

S A V Seedstock 4838
Kraye Seedstock DK 768
Queen DK 041

S A V Registry 2831
S A V Blackcap May 4136
S A V Final Answer 0035
Queen FK 871
Barstow Cash
BSF Hot Lotto 1401
BSF Princess EL Cap W2
S A V Final Answer 0035
MSAR Lady Eston 6528

Act BW	86
Adj WW/WWR	516 / 85
Adj YW	1100

ANGUSGS

CED	BW	WW	YW	SC	MILK	MARB	RE	\$W	\$B	\$C
6	0.9	49	98	0.07	26	0.28	0.35	49	109	207

- Dam Record: BWR 3@98, WWR 3@93
- ADG 3.93
- Heifer bull.

79 REG: 20192136 DOB: 02/17/21 TATTOO: 1251

S A V Seedstock 4838
Kraye Seedstock DK 768
Queen DK 041

S A V Registry 2831
S A V Blackcap May 4136
S A V Final Answer 0035
Queen FK 871
Sitz Upward 307R
Sitz Eisa Evergreen 12S
Connealy Onstar 3213
Msar Blackcap 465

Act BW	94
Adj WW/WWR	687 / 114
Adj YW	1309

ANGUSGS

CED	BW	WW	YW	SC	MILK	MARB	RE	\$W	\$B	\$C
-2	3.9	79	132	1.31	24	0.20	0.66	75	143	267

- Dam Record: BWR 2@103, WWR 2@116
- ADG 4.19
- Smooth-made cow bull. Grandam just left the herd.

81 REG: 20197703 DOB: 02/28/21 TATTOO: 1491

S A V Seedstock 4838
Kraye Seedstock DK 768
Queen DK 041

S A V Registry 2831
S A V Blackcap May 4136
S A V Final Answer 0035
Queen FK 871
S A V 8180 Traveler 004
S A V Emblynette 1182
B C Matrix 4132
Bar S PRIDE 4246

Act BW	87
Adj WW/WWR	558 / 92
Act YW	1006

ANGUSGS

CED	BW	WW	YW	SC	MILK	MARB	RE	\$W	\$B	\$C
2	2.9	68	122	1.64	22	0.34	0.24	61	99	186

- Dam Record: BWR 6@103, WWR 6@101
- ADG 4.10

Simonson K Seedstock 1041 ***

82 REG: 20197702 DOB: 02/07/21 TATTOO: 1041

S A V Seedstock 4838	S A V Registry 2831	Act BW
Kraye Seedstock DK 768	S A V Blackcap May 4136	76
Queen DK 041	S A V Final Answer 0035	Adj WW/WWR
	Queen FK 871	579 / 96
	A A R Image Maker 6538	Adj YW
	A A R Donna 6514	1129
A A R High Five 8563	Sar Final Answer 2019	
Simonson Pride 3645	Simonson Pride 8067	
Simonson Pride 1440		

ANGUSGS

CED	BW	WW	YW	SC	MILK	MARB	RE	\$W	\$B	SC
8	0.4	58	102	0.99	21	-0.01	0.47	57	96	195

- Dam Record: BWR 7@101, WWR 7@108
- ADG 3.71
- Heifer bull.

Simonson K Seedstock 1241 ***

85 REG: 20201290 DOB: 02/17/21 TATTOO: 1241

S A V Seedstock 4838	S A V Registry 2831	Act BW
MSAR Blackcap DK 768	S A V Blackcap May 4136	78
Queen DK 041	S A V Final Answer 0035	Adj WW/WWR
	Queen FK 871	579 / 96
	Connealy Product 568	Adj YW
	Ebonista of Conanga 471	1189
Connealy Final Product	Sitz Alliance 476P	
MSAR Blackcap 600	Msar Blackcap 465	
Msar Blackcap 690		

ANGUSGS

CED	BW	WW	YW	SC	MILK	MARB	RE	\$W	\$B	SC
10	-0.2	49	78	1.87	27	0.18	0.32	63	65	159

- Dam Record: BWR 3@96, WWR 3@100
- ADG 4.10
- Heifer bull.

Simonson K Seedstock 1581 *

83 REG: 20201291 DOB: 03/08/21 TATTOO: 1581

S A V Seedstock 4838	S A V Registry 2831	Act BW
Kraye Seedstock DK 768	S A V Blackcap May 4136	84
Queen DK 041	S A V Final Answer 0035	Adj WW/WWR
	Queen FK 871	633 / 105
	Rito 707 of Ideal 3407 7075	Act YW
	S A V Blackcap May 4136	1068
S A V Resource 1441	Sitz Top Seed 539X	
Msar GD Blackcap 731	Msar GD Blackcap 131	
Msar GD Blackcap 331		

ANGUSGS

CED	BW	WW	YW	SC	MILK	MARB	RE	\$W	\$B	SC
-1	3.2	62	109	1.66	28	0.08	0.45	61	100	204

- Dam Record: BWR 3@98, WWR 3@104
- ADG 4.31

Simonson K Seedstock 1391 *

86 REG: 20201289 DOB: 02/23/21 TATTOO: 1391

S A V Seedstock 4838	S A V Registry 2831	Act BW
Kraye Seedstock DK 768	S A V Blackcap May 4136	86
Queen DK 041	S A V Final Answer 0035	Adj WW/WWR
	Queen FK 871	606 / 100
	HF Kodiak 5R	Act YW
	HF Echo 84R	1139
HF Tiger 5T	Connealy Industry 5634	
Msar GD Blackcap 485	Msar GD Blackcap 196	
Msar GD Blackcap 885		

ANGUSGS

CED	BW	WW	YW	SC	MILK	MARB	RE	\$W	\$B	SC
2	3.3	69	121	1.11	27	-0.16	0.67	68	104	210

- Dam Record: BWR 4@111, WWR 4@95
- ADG 3.59

Simonson K Seedstock 951 **

84 REG: 20197728 DOB: 02/04/21 TATTOO: 951

S A V Seedstock 4838	S A V Registry 2831	Act BW
Kraye Seedstock DK 768	S A V Blackcap May 4136	84
Queen DK 041	S A V Final Answer 0035	Adj WW/WWR
	Queen FK 871	541 / 89
	Sitz Dash 10277	Act YW
	Barstow Queen W16	1146
Barstow Cash	Connealy Industry 5634	
MSAR GD Blackcap 633	Msar G D Blackcap 382	
Msar GD Blackcap 133		

ANGUSGS

CED	BW	WW	YW	SC	MILK	MARB	RE	\$W	\$B	SC
9	1.0	54	97	0.80	25	0.43	0.44	54	100	183

- Dam Record: BWR 3@99, WWR 3@92
- ADG 4.07
- Heifer bull.

Simonson K Seedstock 1911 *

87 REG: 20197711 DOB: 02/23/21 TATTOO: 1911

S A V Seedstock 4838	S A V Registry 2831	Act BW
Kraye Seedstock DK 768	S A V Blackcap May 4136	78
Queen DK 041	S A V Final Answer 0035	Adj WW/WWR
	Queen FK 871	527 / 87
	HF Done Right 125R	Act YW
	HF Tibbie 126W	
HF Done Right 32Y	S A V Final Answer 0035	
Msar Van Pride 484	Msar Van Pride 884	
Msar Van Pride 284		

ANGUSGS

CED	BW	WW	YW	SC	MILK	MARB	RE	\$W	\$B	SC
5	1.3	48	80	1.14	25	-0.04	-0.21	48	74	155

- Dam Record: BWR 6@91, WWR 6@99
- ADG 3.10
- Heifer bull.

Reference Photo



Daughter of Seedstock

Reference Photo



Daughter of Seedstock

Simonson KSeedstock 1361 ★★★

88 REG: 20197715 DOB: 02/23/21 TATTOO: 1361

S A V Seedstock 4838	S A V Registry 2831	Act BW
Kraye Seedstock DK 768	S A V Blackcap May 4136	85
Queen DK 041	S A V Final Answer 0035	Adj WW/WWR
	Queen FK 871	527 / 87
	S A V 8180 Traveler 004	Adj YW
	S A V Emblynette 1182	1121
S A V 004 Predominant 4438	BT Right Time 24J	
Msar Lady Eston 385	Msar Lady Eston 4317	ANGUSGS
Msar Lady Eston 785		

CED	BW	WW	YW	SC	MILK	MARB	RE	\$W	\$B	\$C
7	1.6	59	100	1.70	27	0.18	0.49	65	90	192

- Dam Record: BWR 7@103, WWR 7@97
- ADG 4.00
- Heifer bull.

T Minert K Seedstock 1331 ★★

92 REG: 20197753 DOB: 02/20/21 TATTOO: 1331

S A V Seedstock 4838	S A V Registry 2831	Act BW
Kraye Seedstock DK 768	S A V Blackcap May 4136	89
Queen DK 041	S A V Final Answer 0035	Adj WW/WWR
	Queen FK 871	583 / 96
	A A R Image Maker 6538	Adj YW
	A A R Donna 6514	1105
A A R High Five 8563	S A V Final Answer 0035	
Msar Queen Eva 355	Msar Queen Eva 988	ANGUSGS
Msar Queen Eva 199		

CED	BW	WW	YW	SC	MILK	MARB	RE	\$W	\$B	\$C
8	0.8	60	106	1.97	20	0.18	0.30	59	92	203

- Dam Record: BWR 6@110, WWR 6@104
- ADG 3.52
- Heifer bull.

Simonson KSeedstock 1003 ★★★

89 REG: 20197713 DOB: 03/13/21 TATTOO: 1003

S A V Seedstock 4838	S A V Registry 2831	Act BW
Kraye Seedstock DK 768	S A V Blackcap May 4136	80
Queen DK 041	S A V Final Answer 0035	Adj WW/WWR
	Queen FK 871	/
	Sitz Upward 307R	Act YW
	Sitz Eisa Evergreen 12S	1084
Sitz Top Seed 539X	Stepladder 004 Traveler 484	
Msar Pride 341	Msar Pride 378	ANGUSGS
Msar Pride 6541		

CED	BW	WW	YW	SC	MILK	MARB	RE	\$W	\$B	\$C
7	1.8	65	114	0.81	32	0.36	0.38	75	115	228

- Dam Record: BWR 4@104, WWR 4@100
- ADG NA
- Heifer bull.

T Minert K Seedstock 1381 ★★★

93 REG: 20197754 DOB: 02/23/21 TATTOO: 1381

S A V Seedstock 4838	S A V Registry 2831	Act BW
Kraye Seedstock DK 768	S A V Blackcap May 4136	84
Queen DK 041	S A V Final Answer 0035	Adj WW/WWR
	Queen FK 871	581 / 96
	Sitz Traveler 8180	Adj YW
	S A V Emulous 8145	1141
S A V Final Answer 0035	Sitz Upward 307R	
Msar Queen 460	Msar Queen 727	ANGUSGS
Msar Queen 2114		

CED	BW	WW	YW	SC	MILK	MARB	RE	\$W	\$B	\$C
7	1.5	58	108	1.84	24	0.62	0.67	56	135	245

- Dam Record: BWR 4@97, WWR 5@100
- ADG 3.78
- Heifer bull.

Simonson KSeedstock 1401 ★★★

90 REG: 20197712 DOB: 02/23/21 TATTOO: 1401

S A V Seedstock 4838	S A V Registry 2831	Act BW
Kraye Seedstock DK 768	S A V Blackcap May 4136	85
Queen DK 041	S A V Final Answer 0035	Adj WW/WWR
	Queen FK 871	605 / 100
	A A R Image Maker 6538	Adj YW
	A A R Donna 6514	1167
A A R High Five 8563	Connealy Stimulus 8419	
Msar Pride 307	Msar Pride 229	ANGUSGS
Msar Pride 0907		

CED	BW	WW	YW	SC	MILK	MARB	RE	\$W	\$B	\$C
7	1.1	55	89	0.90	26	0.35	0.26	60	80	193

- Dam Record: BWR 7@101, WWR 7@102
- ADG 3.78
- Heifer bull.

Simonson K Seedstock 1351 ★★★

94 REG: 20197752 DOB: 02/20/21 TATTOO: 1351

S A V Seedstock 4838	S A V Registry 2831	Act BW
Kraye Seedstock DK 768	S A V Blackcap May 4136	76
Queen DK 041	S A V Final Answer 0035	Adj WW/WWR
	Queen FK 871	595 / 98
	A A R High Five 8563	Adj YW
	Msar GD Blackcap 095	1053
Msar High Five 8452	Connealy Final Product	
MSAR Lady Eston 6552	Msar Lady Eston 280	ANGUSGS
Msar Lady Eston 480		

CED	BW	WW	YW	SC	MILK	MARB	RE	\$W	\$B	\$C
10	-0.7	42	64	1.02	25	0.09	0.03	53	51	147

- Dam Record: BWR 3@88, WWR 3@98
- ADG 3.09
- Heifer bull.

Simonson K Seedstock 231 ★★★

91 REG: 20197710 DOB: 01/14/21 TATTOO: 231

S A V Seedstock 4838	S A V Registry 2831	Act BW
Kraye Seedstock DK 768	S A V Blackcap May 4136	80
Queen DK 041	S A V Final Answer 0035	Adj WW/WWR
	Queen FK 871	633 / 105
	S A V Final Answer 0035	Adj YW
	Happy Dell of Conanga 262	1227
Connealy Right Answer 746	Connealy Onstar 3213	
Msar Pride 157	Msar Pride 516	ANGUSGS
Msar Pride 7630		

CED	BW	WW	YW	SC	MILK	MARB	RE	\$W	\$B	\$C
13	-0.8	53	99	1.79	34	0.48	-0.06	68	106	213

- Dam Record: BWR 6@91, WWR 6@106
- ADG 4.00
- Heifer bull. He has a spot on his eye.

CALVING EASE STARS

- ★★★ Bull is highly recommended for use on heifers to sire light birth weight calves.
- ★★ Bull is designated to work on heifers that are larger framed with more management.
- ★ Bull is highly recommended for use on cows.



Reference Sire

Simonson Johnny Walker 1729 #19548958
 LD Capitalist 316 x HF Who's That 7A

CED	BW	WW	YW	SC	MILK	MARB	RE	\$W	\$B	\$C
9	-0.3	79	141	0.06	20	0.76	0.64	78	176	288

Johnny Walker was Lyle Bowman's pick in 2019 sale. He is a heifer bull with good numbers and eye appeal. I've bred 115 heifers to him for better test on his calving ease and he is defiantly a heifer bull. Semen is available.

Simonson Johnny Walker 1141 ***

95 REG: 20247334 DOB: 02/11/21 TATTOO: 1141

LD Capitalist 316	Connealy Capitalist 028	Act BW
Simonson Johnny Walker 1729	LD Dixie Erica 2053	86
Simonson Lady Eston 7045	HF Who's That 7A	Adj WW/WWR
	Msar Lady Eston 1045	614 / 101
	Sitz Upward 307R	Adj YW
Sitz Top Seed 539X	Sitz Eisa Evergreen 12S	1254
Msar Pride 372	A A R High Five 8563	
Msar Pride 1059	Msar Pride 9843	

ANGUSGS

CED	BW	WW	YW	SC	MILK	MARB	RE	\$W	\$B	\$C
5	1.3	68	118	-0.17	27	0.52	0.28	72	146	242

- Dam Record: BWR 7@107, WWR 7@110
- ADG 4.31
- Heifer bull with nice performance.

Simonson Johnny Walker 651 ***

97 REG: 20247336 DOB: 01/27/21 TATTOO: 651

LD Capitalist 316	Connealy Capitalist 028	Act BW
Simonson Johnny Walker 1729	LD Dixie Erica 2053	86
Simonson Lady Eston 7045	HF Who's That 7A	Adj WW/WWR
	Msar Lady Eston 1045	636 / 105
	S A V Seedstock 4838	Adj YW
Kraye Seedstock DK 768	Queen DK 041	1294
Simonson GD Blackcap 9124	Connealy Industry 5634	
Simonson GD Blackcap 4726	Simonson GD Blackcap 1410	

ANGUSGS

CED	BW	WW	YW	SC	MILK	MARB	RE	\$W	\$B	\$C
4	2.4	65	111	0.67	23	0.62	0.76	65	149	261

- Dam Record: BWR 1@108, WWR 1@105
- ADG 4.43



Simonson Johnny Walker 611 ***

98 REG: 20247333 DOB: 01/25/21 TATTOO: 611

LD Capitalist 316	Connealy Capitalist 028	Act BW
Simonson Johnny Walker 1729	LD Dixie Erica 2053	79
Simonson Lady Eston 7045	HF Who's That 7A	Adj WW/WWR
	Msar Lady Eston 1045	648 / 107
	HF Who's That 7A	Adj YW
Simonson Who's That 1216	Simonson Pride 1440	1203
Simonson Lady Eston 9194	A A R High Five 8563	
Msar Lady Eston 345	Msar Lady Eston 1045	

ANGUSGS

CED	BW	WW	YW	SC	MILK	MARB	RE	\$W	\$B	\$C
6	1.2	67	103	0.33	12	0.41	0.34	58	119	207

- Dam Record: BWR 1@100, WWR 1@107
- ADG 3.74
- Good weaning heifer bull.

Simonson Johnny Walker 581 ***

96 REG: 20247335 DOB: 01/24/21 TATTOO: 581

LD Capitalist 316	Connealy Capitalist 028	Act BW
Simonson Johnny Walker 1729	LD Dixie Erica 2053	70
Simonson Lady Eston 7045	HF Who's That 7A	Adj WW/WWR
	Msar Lady Eston 1045	633 / 105
	S A V Seedstock 4838	Adj YW
Kraye Seedstock DK 768	Queen DK 041	1257
Simonson Lady Eston 9112	HF Done Right 32Y	
Simonson Lady Eston 4713	Simonson Lady Eston 9211	

ANGUSGS

CED	BW	WW	YW	SC	MILK	MARB	RE	\$W	\$B	\$C
15	-2.4	60	104	0.68	19	0.47	0.17	63	115	203

- Dam Record: BWR 1@90, WWR 1@105
- ADG 4.21
- Heifer bull.



Three Generations of Colemans!

Reference Sire

Simonson Loadout 1369 #19548975
T K Steamboat D307 x Msar Final Answer 2019

CED	BW	WW	YW	SC	MILK	MARB	RE	\$W	\$B	\$C
-5	5.2	71	111	0.89	27	0.53	0.18	70	91	196

*Loadout is a Steamboat son that Nick Simms purchased in 2019 sale.
 His consistency is like the old bull.*



99 REG: 20241043 DOB: 02/08/21 TATTOO: 1071 ★
 T K Steamboat D307
Simonson Loadout 1369
 Simonson Lady Eston 2501
 Connealy Stimulus 8419
Msar Pride 034
 Msar Pride 3234

S A V Renown 3439
 T K Tesa W592
 Msar Final Answer 2019
 Simonson Lady Eston 9211
 H A Power Alliance 1025
 Black Creesa of Conanga 5332
 Connealy Front Page 0228
 Msar Pride 0462

Act BW
95
 Adj WW/WWR
631 / 104
 Adj YW
1250

ANGUSGS

CED	BW	WW	YW	SC	MILK	MARB	RE	\$W	\$B	\$C
1	3.9	65	105	0.84	23	0.81	0.13	62	93	185

- Dam Record: BWR 7@107, WWR 8@106
- ADG 4.17
- Good performing cow bull.



100 REG: 20241037 DOB: 02/10/21 TATTOO: 1091 ★
 T K Steamboat D307
Simonson Loadout 1369
 Simonson Lady Eston 2501
 Sitz Upward 307R
Msar Pride 127
 Msar Pride 521

S A V Renown 3439
 T K Tesa W592
 Msar Final Answer 2019
 Simonson Lady Eston 9211
 Connealy Onward
 Sitz Henrietta Pride 81M
 Connealy Front Page 0228
 Msar Pride 221

Act BW
88
 Adj WW/WWR
627 / 104
 Adj YW
1296

ANGUSGS

CED	BW	WW	YW	SC	MILK	MARB	RE	\$W	\$B	\$C
-6	5.5	78	129	1.48	31	0.42	0.50	78	124	256

- Dam Record: BWR 8@103, WWR 8@101
- ADG 4.50
- Good performing cow bull.

101 REG: 20240975 DOB: 01/29/21 TATTOO: 741 ★
 T K Steamboat D307
Simonson Loadout 1369
 Simonson Lady Eston 2501
 BSF Hot Lotto 1401
MSAR Pride 610
 Msar Pride 110

S A V Renown 3439
 T K Tesa W592
 Msar Final Answer 2019
 Simonson Lady Eston 9211
 Barstow Cash
 BSF Princess EL Cap W2
 S A V Iron Mountain 8066
 Msar Pride 238

Act BW
86
 Adj WW/WWR
659 / 109
 Adj YW
1257

ANGUSGS

CED	BW	WW	YW	SC	MILK	MARB	RE	\$W	\$B	\$C
4	1.0	69	110	-0.16	30	0.61	0.39	83	112	210

- Dam Record: BWR 3@106, WWR 3@101
- ADG 4.03
- Nice performing bull.



Jaylee, Zach, Makala and Shaina

102 REG: 20243071 DOB: 02/03/21 TATTOO: 921 ★
 T K Steamboat D307
Simonson Loadout 1369
 Simonson Lady Eston 2501
 HF Who's That 7A
Simonson Pride 6922
 Simonson Pride 1438

S A V Renown 3439
 T K Tesa W592
 Msar Final Answer 2019
 Simonson Lady Eston 9211
 HF Tiger 5T
 HF Lucy 317Y
 Connealy Industry 5634
 Simonson Pride 6815

Act BW
86
 Adj WW/WWR
572 / 95
 Adj YW
1204

ANGUSGS

CED	BW	WW	YW	SC	MILK	MARB	RE	\$W	\$B	\$C
3	2.9	67	115	0.90	24	0.48	0.37	62	127	225

- Dam Record: BWR 3@102, WWR 3@96
- ADG 4.26



LOT 103

103 REG: 20240843 DOB: 02/03/21 TATTOO: 941 ★

T K Steamboat D307
Simonson Loadout 1369
 Simonson Lady Eston 2501

S A V Renown 3439
 T K Tesa W592
 Msar Final Answer 2019
 Simonson Lady Eston 9211
 Basin Payweight 006S
 21AR O Lass 7017
 Connealy Industry 5634
 Msar G D Blackcap 382

Act BW	87
Adj WW/WWR	632 / 104
Adj YW	1213

ANGUS_{GS}

CED	BW	WW	YW	SC	MILK	MARB	RE	\$W	\$B	\$C
-5	3.5	58	90	0.82	29	0.77	0.27	64	86	167

- Dam Record: BWR 3@105, WWR 3@106
- ADG 3.91



GENEX

Reference Sire

KG Justified 3023 #17707279
 Connealy Judgment x Sitz Wisdom 481T

CED	BW	WW	YW	SC	MILK	MARB	RE	\$W	\$B	\$C
11	-2.1	61	109	1.73	30	1.05	0.30	88	133	272

A Genex bull proven as a outstanding female maker and heifer bull.



LOT 104

104 REG: 20197706 DOB: 01/24/21 TATTOO: 561 ★★★

Connealy Judgment
KG Justified 3023
 KG Miss Magic 1443

Connealy Consensus 7229
 Entrine of Conanga 9876
 Sitz Wisdom 481T
 KG Miss Magic 3528
 Barstow Cash
 Black Ceena of Conanga 941C
 A A R High Five 8563
 Msar Queen 056

Act BW	83
Adj WW/WWR	695 / 115
Adj YW	1204

ANGUS_{GS}

CED	BW	WW	YW	SC	MILK	MARB	RE	\$W	\$B	\$C
7	1.2	80	130	1.07	21	0.87	0.54	85	142	283

- Dam Record: BWR 1@105, WWR 1@115
- ADG 3.43
- Good weaning heifer bull.



Simonson KG Justified 1101 ***

105	REG: 20197701	DOB: 02/10/21	TATTOO: 1101							
Conneally Judgment KG Justified 3023 KG Miss Magic 1443	Conneally Consensus 7229 Entrine of Conanga 9876 Sitz Wisdom 481T KG Miss Magic 3528 S A V Registry 2831 S A V Blackcap May 4136 Conneally Answer 71 Msar Pride 073	Act BW 81 Adj WW/WWR 680 / 112 Adj YW 1230								
S A V Seedstock 4838 Simonson Pride 973 Msar Pride 273		ANGUSGS								
CED	BW	WW	YW	SC	MILK	MARB	RE	\$W	\$B	SC
7	-0.6	66	110	1.00	29	0.36	0.48	82	100	227

- Dam Record: BWR 1@102, WWR 1@112
- ADG 3.71
- Heifer bull.

Simonson Wind Over 1541 ***

109	REG: 20197704	DOB: 03/03/21	TATTOO: 1541							
A A R Wind Over 3822 A A R Wind Over 5560 A A R Blackbird 6621	V D A R Really Windy 4097 A A R Blackcap Kay 8824 Rito 616 of 4B20 6807 A A R Blackbird 2469 S A V Resource 1441 Erica of Par 159 Sitz Alliance 6595 Simonson G D Blackcap 2404	Act BW 86 Adj WW/WWR 588 / 97 Act YW 1000								
SHB Resource 285C Simonson GD Blackcap 7004 SIMONSON GD Blackcap 7904		ANGUSGS								
CED	BW	WW	YW	SC	MILK	MARB	RE	\$W	\$B	SC
11	1.6	58	93	0.28	16	0.59	0.39	55	101	210

- Dam Record: BWR 3@95, WWR 3@89
- ADG 3.52
- Heifer bull.

TM Justified 1092 ***

106	REG: 20243850	DOB: 01/21/21	TATTOO: 1092							
Conneally Judgment KG Justified 3023 KG Miss Magic 1443	Conneally Consensus 7229 Entrine of Conanga 9876 Sitz Wisdom 481T KG Miss Magic 3528 LD Capitalist 316 MCATL Blackbird 831-1378 A A R High Five 8563 Msar Queen 877	Act BW 74 Adj WW/WWR 610 / 100 Adj YW 1268								
Musgrave 316 Stunner TM Queen 9192 Msar Queen 377		ANGUSGS								
CED	BW	WW	YW	SC	MILK	MARB	RE	\$W	\$B	SC
12	-2.2	55	96	0.49	27	0.71	0.36	67	113	234

- Dam Record: BWR 1@100, WWR 1@100
- ADG 4.43
- Heifer bull.

T Minert Wind Over 1431 ***

110	REG: 20197755	DOB: 02/24/21	TATTOO: 1431							
A A R Wind Over 3822 A A R Wind Over 5560 A A R Blackbird 6621	V D A R Really Windy 4097 A A R Blackcap Kay 8824 Rito 616 of 4B20 6807 A A R Blackbird 2469 Sitz Traveler 8180 S A V Emulous 8145 Sitz Alliance 6595 Minerts Queen 707	Act BW 86 Adj WW/WWR 620 / 102 Adj YW 1242								
S A V Final Answer 0035 Msar Queen 224 Msar Queen 726		ANGUSGS								
CED	BW	WW	YW	SC	MILK	MARB	RE	\$W	\$B	SC
9	1.8	62	100	1.03	16	0.25	0.10	55	82	165

- Dam Record: BWR 8@101, WWR 8@102
- ADG 4.19
- Heifer bull.

Simonson Justified 711 **

107	REG: 20235343	DOB: 01/29/21	TATTOO: 711							
KG Justified 3023 A A R Justified 8176 A A R Blackbird 9044	Conneally Judgment KG Miss Magic 1443 B C Matrix 4132 A A R Blackbird 7026 HF Done Right 125R HF Tibbie 126W Leachman Right Time Msar Blackcap 233	Act BW 91 Adj WW/WWR 581 / 96 Adj YW 1229								
HF Done Right 32Y Msar Blackcap 418 MSAR Blackcap 718		ANGUSGS								
CED	BW	WW	YW	SC	MILK	MARB	RE	\$W	\$B	SC
7	1.7	67	112	3.05	29	0.37	0.99	76	130	245

- Dam Record: BWR 6@100, WWR 6@97
- ADG 4.36

Simonson Msar Shaker 1741 ***

111	REG: 20197708	DOB: 01/17/21	TATTOO: 1741							
Conneally Freightliner Msar Shaker 2307 Msar Pride 538	Bon View Bando 598 Joana Erica of Conanga Conneally Onstar 3213 Msar Pride 338 Barstow Cash Black Ceena of Conanga 941C HF Tiger 5T Msar GD Blackcap 8745	Act BW 72 Adj WW/WWR 633 / 105 Adj YW 1166								
Conneally Cash 941C Simonson GD Blackcap 9174 Msar GD Blackcap 574		ANGUSGS								
CED	BW	WW	YW	SC	MILK	MARB	RE	\$W	\$B	SC
11	-1.8	50	80	0.28	35	0.10	0.18	73	67	159

- Dam Record: BWR 1@92, WWR 1@105
- ADG 3.59
- Heifer bull.

Simonson Wind Over 1341 ***

108	REG: 20197718	DOB: 02/20/21	TATTOO: 1341							
A A R Wind Over 3822 A A R Wind Over 5560 A A R Blackbird 6621	V D A R Really Windy 4097 A A R Blackcap Kay 8824 Rito 616 of 4B20 6807 A A R Blackbird 2469 A A R Image Maker 6538 A A R Donna 6514 HF Done Right 32Y Msar Edella 035	Act BW 76 Adj WW/WWR 546 / 90 Adj YW 1168								
A A R High Five 8563 Msar Edella 540 Msar Edella 340		ANGUSGS								
CED	BW	WW	YW	SC	MILK	MARB	RE	\$W	\$B	SC
13	-1.9	51	90	1.46	20	0.39	0.11	49	94	161

- Dam Record: BWR 4@98, WWR 4@101
- ADG 4.19
- Heifer bull.

Simonson Diamond Summit 1451 *

112	REG: 20197721	DOB: 02/24/21	TATTOO: 1451							
S Summit 4604 M Diamond Summit 466 M Diamond Emma E 543	S Summit 956 S Lass 8245 Sitz Dash 10277 M Diamond Emma E 1170 Rito 707 of Ideal 3407 7075 S A V Blackcap May 4136 Sitz Upward 307R Circle S Eisa Erica 2072	Act BW 88 Adj WW/WWR 604 / 100 Adj YW 1226								
S A V Resource 1441 Msar Erica 784 Msar Erica 384		ANGUSGS								
CED	BW	WW	YW	SC	MILK	MARB	RE	\$W	\$B	SC
2	2.8	54	106	0.93	23	0.30	0.38	47	103	197

- Dam Record: BWR 3@100, WWR 3@104
- ADG 4.19



Semen for Sale

Marcys Panhandle 214-9

REG: 19469944 DOB: 04/10/2019 TATTOO: 2149

Marcys Scale Crusher
Marcys 17 Scale Crusher 34-7
 Marcys 13 Ethelda E 4-3

Sitz Upward 307R
 Marcys Erica 393
 S A V Final Answer 0035
 Marcys 01 Ethelda E 82-1
 Connealy Consensus
 Blue Lilly of Conanga 16
 Marcys 08 Magnitude 63-8
 Marcys 03 Ethelda E 131-3

Connealy Consensus 7229
Marcys 12 Ethelda E 64-2
 Marcys 10 Ethelda E 165-0

CED	BW	WW	YW	SC	MILK	MARB	RE	\$W	\$B	SC
4	2.4	78	137	0.72	37	0.61	0.69	89	168	275

• OWNED WITH TOM MARCY & MATT LOWERY



Simonson Johnny Walker 1729

REG: 19548958 DOB: 02/06/2019 TATTOO: 1729

Connealy Capitalist 028
LD Capitalist 316
 LD Dixie Erica 2053

S A V Final Answer 003
 Prides Pita of Conanga 8821
 C A Future Direction 5321
 LD Dixie Erica Oar 0853
 HF Tiger 5T
 HF Lucy 317Y
 TC Aberdeen 759
 MSAR Lady Eston 948



HF Who's That 7A
Simonson Lady Eston 7045
 Msar Lady Eston 1045

CED	BW	WW	YW	SC	MILK	MARB	RE	\$W	\$B	SC
9	-0.3	79	141	0.06	20	0.76	0.64	78	176	288

• OWNED WITH BOWMAN CATTLE, PINE BLUFFS, WY



Contact J.W. Simonson to purchase semen.





Females for Sale

DISPERSING 20 HEAD OF COMMERCIAL ANGUS HEIFER CALVES

These heifers are usually retained in the herd and are out of the last of the commercial cows.

They will sell immediately following the bulls on February 19th.



BRED HEIFER PAIRS FOR SALE PRIVATE TREATY

Purchased from long time customers Monte Moore and Dan Carson.
They are currently calving at the ranch. January/February calves.

*We invite you to come view calves at the ranch and the daughters in production sired by
Circle L Gus, Simonson Steamboat, Kraye Seedstock, U2 Coalition.*

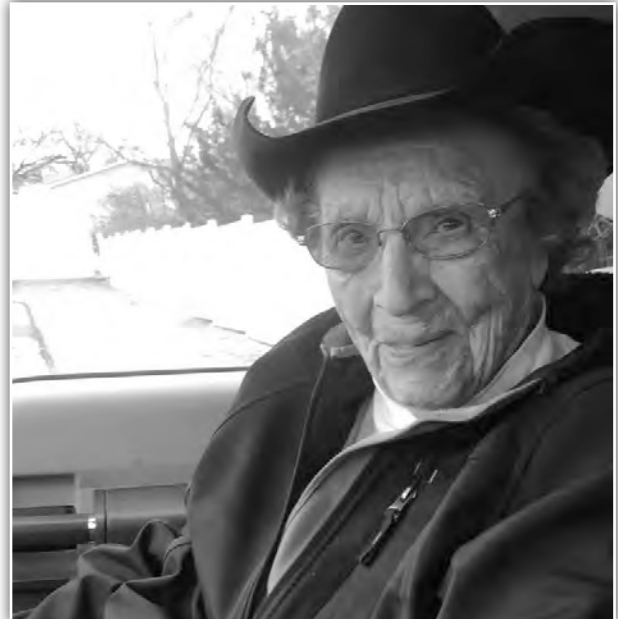
Also view young calves out of Simonson Johnny Walker and Marcys Panhandle.



In Loving Memory



Movie Star Mike McGinn (1936-2021)
Long time customer and great friend with JW



Grandma June (1921-2021)
Bull delivery will not be the same this year



Assisting our Kansas friends at Bar S Angus



Special people making a difference - Ray and Karen Howell

Kicking Bear, a registered 501(c)3 organization, is a nationwide youth outreach ministry that was founded in the year 1999 by Ray & Karen Howell and is headquartered in La Crosse, Wisconsin. We use our summer campouts, adventure days, youth hunts, and year-round mentorship to reach underprivileged and at-risk youth and to let them know that God has a purpose for them, and that purpose is good.

Thank you for your support!



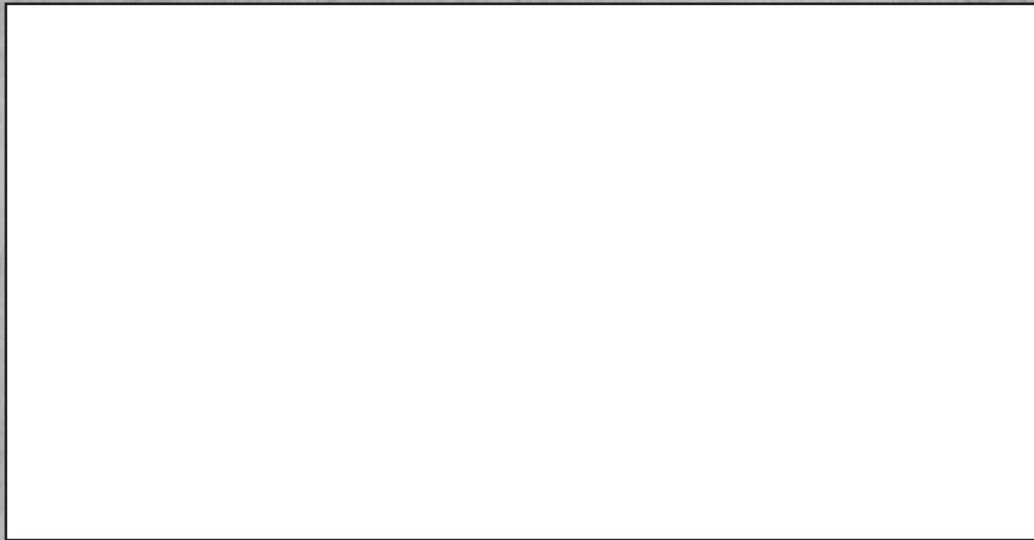
Minert-Simonson Angus

83450 Hawley Flats Ave

Dunning NE 68833

FIRST CLASS MAIL

DO NOT DELAY



Annual Bull Sale
FEBRUARY 19, 2022

1:00 PM CT / AT THE RANCH / DUNNING, NEBRASKA



LOT 1



LOT 24